

# Lullaby

Measures 1-7 of the piece. The music is in 3/4 time with a key signature of three sharps (F#, C#, G#). The melody in the right hand is characterized by a gentle, flowing line with many slurs. The left hand provides a steady accompaniment with eighth-note patterns.

Measures 8-14. The melody continues with a similar lyrical quality. A large, faint watermark is visible across the page, reading '钢琴网' (Piano.net).

Measures 15-20. The piece begins to build in intensity. The right hand features more complex chordal textures and some triplets. The left hand continues with its accompaniment.

Measures 21-27. A dynamic shift occurs at measure 21, marked with *rit.* (ritardando). The tempo then returns to the original pace at measure 25, marked with *a tempo*. The melody in the right hand becomes more active and rhythmic.

Measures 28-34. The piece concludes with a return to the gentle, lullaby-like character of the beginning. The melody in the right hand is soft and melodic, while the left hand maintains a consistent accompaniment.

35 *rit.* *a tempo* *rit.* *a tempo*

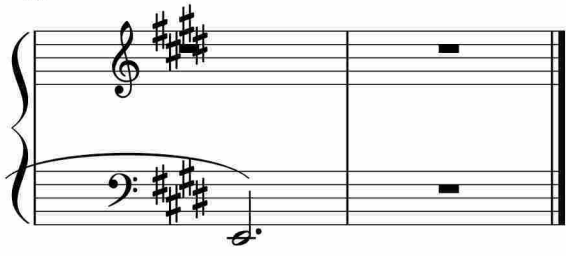
42

49

56

62 *rit.* *a tempo*

69 *rit.*



于斯课堂  
www.yusi.tv