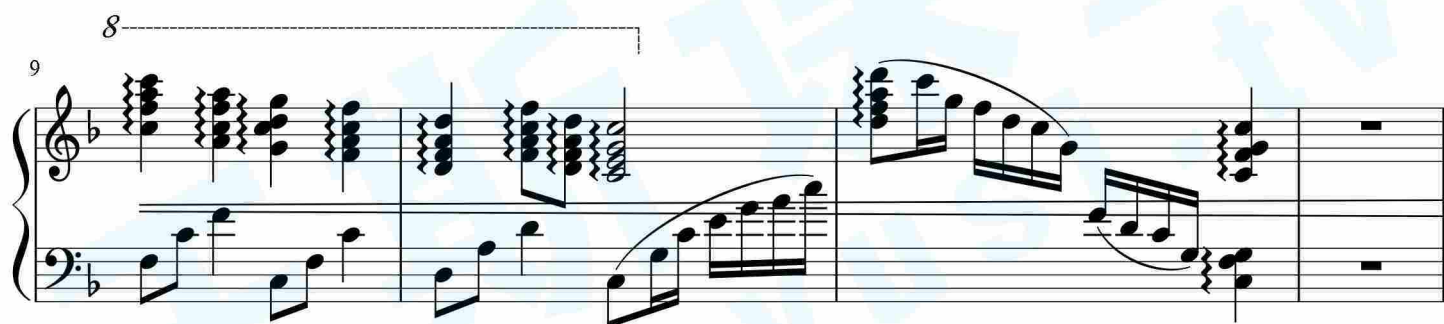
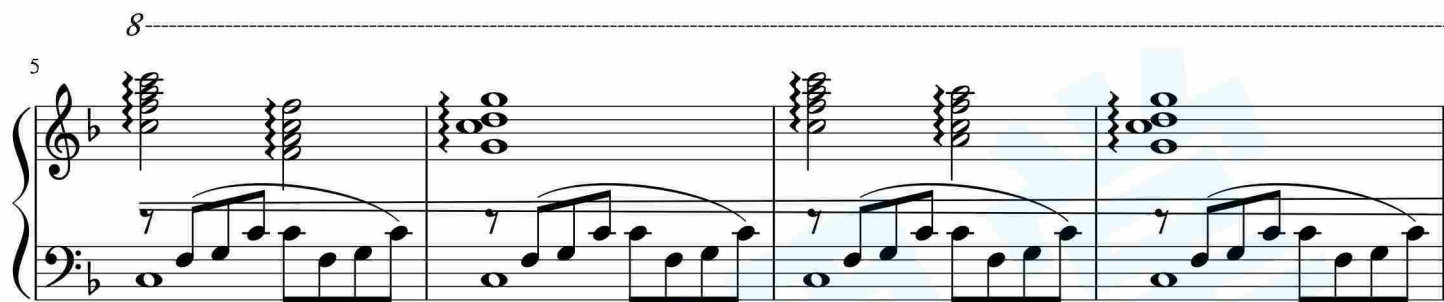


弯弯的月亮



8

21

24

8

24

f

mf

26

28

28

30

30

32

8

32

34

8

34

8

36

8

38

8

40

41

8

42

43

8

44

8

45

8

47

8

48

8

49

8

50

Measures 50-51. Treble clef: Continuous eighth-note melody. Bass clef: Simple harmonic accompaniment.

51

Measures 51-52. Treble clef: Continuous eighth-note melody. Bass clef: Simple harmonic accompaniment.

52

Measures 52-53. Treble clef: Continuous eighth-note melody. Bass clef: Simple harmonic accompaniment.

53

Measures 53-54. Treble clef: Continuous eighth-note melody. Bass clef: Simple harmonic accompaniment.

54

Measures 54-55. Treble clef: Continuous eighth-note melody. Bass clef: Simple harmonic accompaniment.

55

Measures 55-56. Treble clef: Complex chordal texture with many beamed notes. Bass clef: Complex chordal texture with many beamed notes.

57

Measures 57-58 of a musical score. The key signature has two flats (B-flat and E-flat). Measure 57 features a complex texture with multiple beamed sixteenth notes in both the treble and bass staves, including some triplets. Measure 58 continues this texture with similar rhythmic patterns. The system concludes with a double bar line and a repeat sign.

59

Measures 59-60 of a musical score. Measure 59 begins with an 8-measure rest in the treble staff. The bass staff contains a continuous eighth-note accompaniment. Measure 60 continues the eighth-note accompaniment in the bass staff, while the treble staff has a few notes.

60

Measures 60-61 of a musical score. Measure 60 continues the eighth-note accompaniment in the bass staff. Measure 61 features a more active treble staff with several notes, while the bass staff continues the eighth-note accompaniment.

61

Measures 61-62 of a musical score. Measure 61 continues the eighth-note accompaniment in the bass staff. Measure 62 features a more active treble staff with several notes, while the bass staff continues the eighth-note accompaniment.

62

Measures 62-63 of a musical score. Measure 62 begins with an 8-measure rest in the treble staff. The bass staff contains a continuous eighth-note accompaniment. Measure 63 continues the eighth-note accompaniment in the bass staff, while the treble staff has a few notes.

63

Measures 63-64 of a musical score. Measure 63 begins with an 8-measure rest in the treble staff. The bass staff contains a continuous eighth-note accompaniment. Measure 64 continues the eighth-note accompaniment in the bass staff, while the treble staff has a few notes.

64

Measures 64-65: Treble clef has a whole note chord (F4, A4, C5) with a fermata. Bass clef has a continuous eighth-note accompaniment pattern.

65

Measures 65-66: Treble clef has a whole note chord (F4, A4, C5) with a fermata. Bass clef has a continuous eighth-note accompaniment pattern.

66

Measures 66-67: Treble clef has a whole note chord (F4, A4, C5) with a fermata. Bass clef has a continuous eighth-note accompaniment pattern.

67

Measures 67-68: Treble clef has a melodic line with a fermata. Bass clef has a continuous eighth-note accompaniment pattern.

68

Measures 68-69: Treble clef has a melodic line with a fermata. Bass clef has a continuous eighth-note accompaniment pattern.

69

Measures 69-70: Treble clef has a melodic line with a fermata. Bass clef has a continuous eighth-note accompaniment pattern.

This image shows a page of a musical score for 'The Swan' by Camille Saint-Saëns, measures 70 through 84. The score is written for piano and features a variety of musical notations including eighth notes, sixteenth notes, and chords. The key signature is one flat (B-flat), and the time signature is 2/4. The score includes dynamic markings such as *sf* (sforzando) and *cresc.* (crescendo). The piece is characterized by its elegant and graceful melody, which is often associated with the swan. The score is presented in a clear, professional layout with a light blue background.

87

8

4

90

8

12

14

14

14

91

14

14

14

95

8

97

8

gliss.

11

98

8

gliss.

gliss.

gliss.

11

11

99

100

108

102

107

109