

带休止符的乐曲练习44

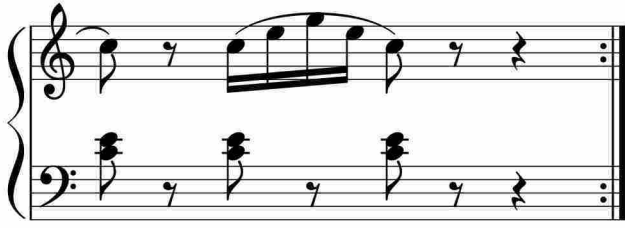
The first system of the exercise consists of two staves. The upper staff is in treble clef with a common time signature (C). It features a sequence of eighth notes with rests, followed by a half-note chord, and then another sequence of eighth notes with rests, ending with a half-note chord. The lower staff is in bass clef and provides a harmonic accompaniment of chords with eighth-note rests.

The second system continues the exercise. The upper staff shows a melodic line with eighth-note runs and rests, including a slur over a group of notes. The lower staff continues with the chordal accompaniment.

The third system begins with a measure number '7'. It features a more complex melodic line in the upper staff with slurs and a repeat sign. The lower staff has a bass clef and contains chords with rests.

The fourth system starts at measure 10. The upper staff has a melodic line with slurs and eighth-note patterns. The lower staff continues with the chordal accompaniment.

The fifth system begins at measure 13. It includes a measure number '8' above the staff. The upper staff features a melodic line with slurs and eighth-note patterns. The lower staff continues with the chordal accompaniment.



于斯课堂
www.yusi.tv