

# 芸竹

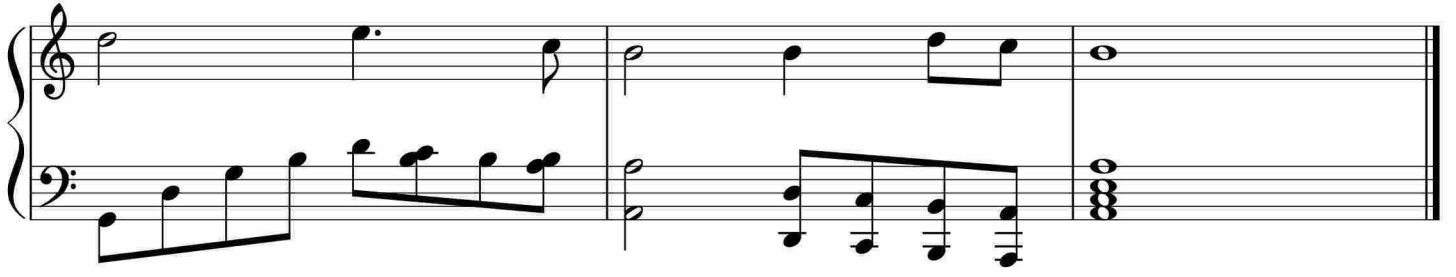
Measures 1-6 of the piece '芸竹'. The music is in 4/4 time. The right hand (treble clef) features a series of whole notes: C4, D4, E4, F4, G4, A4. The left hand (bass clef) plays a rhythmic accompaniment of eighth notes, starting with a quarter rest followed by a dotted quarter note, then eighth notes: C3, D3, E3, F3, G3, A3, B3, C4.

Measures 7-11 of the piece '芸竹'. The right hand (treble clef) continues with quarter notes: B4, C5, B4, A4, G4, F4. The left hand (bass clef) continues with eighth notes: D4, E4, F4, G4, A4, B4, C5, B4, A4, G4, F4, E4, D4, C4.

Measures 12-17 of the piece '芸竹'. The right hand (treble clef) features quarter notes: E4, D4, C4, B3, A3, G3. The left hand (bass clef) continues with eighth notes: C4, B3, A3, G3, F3, E3, D3, C3, B2, A2, G2, F2, E2, D2, C2.

Measures 18-23 of the piece '芸竹'. The right hand (treble clef) features quarter notes: C3, B2, A2, G2, F2, E2. The left hand (bass clef) continues with eighth notes: D2, C2, B1, A1, G1, F1, E1, D1, C1, B0, A0, G0, F0, E0, D0, C0.

Measures 24-29 of the piece '芸竹'. The right hand (treble clef) features quarter notes: C3, B2, A2, G2, F2, E2. The left hand (bass clef) continues with eighth notes: D2, C2, B1, A1, G1, F1, E1, D1, C1, B0, A0, G0, F0, E0, D0, C0.



于斯课堂  
www.yusi.tv