

First Kiss

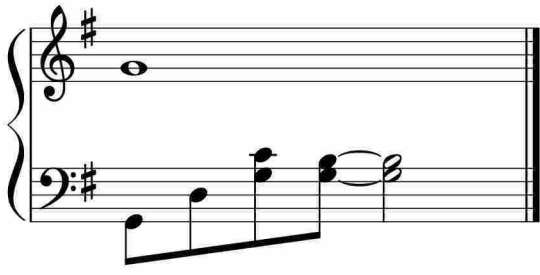
Measures 1-5 of the piece. The music is in 4/4 time with a key signature of one sharp (F#). The right hand starts with rests, while the left hand plays a steady eighth-note accompaniment. The melody begins in measure 5.

Measures 6-9. The right hand continues the melody with eighth notes and quarter notes. The left hand maintains the eighth-note accompaniment. A large, faint watermark is visible across the page.

Measures 10-13. The melody in the right hand features a half note and quarter notes. The left hand continues with eighth notes. The watermark is still present.

Measures 14-18. The right hand melody includes dotted notes and eighth notes. The left hand accompaniment remains consistent. The watermark is visible.

Measures 19-23. The final system shows the melody continuing with eighth notes and quarter notes. The left hand accompaniment concludes with a final chord. The watermark is visible.



于斯课堂
www.yusi.tv