

皇后大道

Measures 1-4 of the piece. The music is in 4/4 time. The right hand features a melody of eighth notes, while the left hand provides a rhythmic accompaniment with chords and eighth-note patterns.

Measures 5-6. The right hand continues with a steady eighth-note melody. The left hand features a more active bass line with eighth-note runs and chords.

Measures 7-9. Measure 7 includes a repeat sign. The right hand melody remains consistent, while the left hand accompaniment continues with rhythmic patterns.

Measures 10-13. The right hand melody shows some variation in note values. The left hand accompaniment maintains the established rhythmic structure.

Measures 14-17. The right hand melody continues with eighth-note patterns. The left hand accompaniment features a mix of chords and eighth-note runs.

18

Musical notation for measures 18 and 19. The right hand (treble clef) plays a sequence of eighth notes: G4, A4, B4, C5, B4, A4, G4. The left hand (bass clef) plays a sequence of eighth notes: G3, A3, B3, C4, B3, A3, G3. Both hands end with a fermata over the final note.

20

Musical notation for measures 20 and 21. The right hand plays a sequence of eighth notes: G4, A4, B4, C5, B4, A4, G4. The left hand plays a sequence of eighth notes: G3, A3, B3, C4, B3, A3, G3. Both hands end with a fermata over the final note.

22

Musical notation for measures 22 and 23. The right hand plays a sequence of eighth notes: G4, A4, B4, C5, B4, A4, G4. The left hand plays a sequence of eighth notes: G3, A3, B3, C4, B3, A3, G3. Both hands end with a fermata over the final note.

24

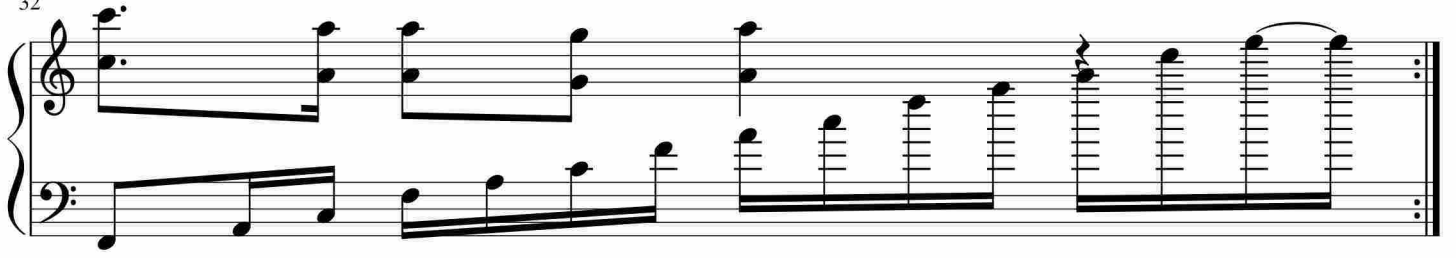
Musical notation for measures 24, 25, and 26. The right hand plays a sequence of eighth notes: G4, A4, B4, C5, B4, A4, G4. The left hand plays a sequence of eighth notes: G3, A3, B3, C4, B3, A3, G3. Both hands end with a fermata over the final note.

27

Musical notation for measures 27, 28, and 29. The right hand plays a sequence of eighth notes: G4, A4, B4, C5, B4, A4, G4. The left hand plays a sequence of eighth notes: G3, A3, B3, C4, B3, A3, G3. Both hands end with a fermata over the final note.

30

Musical notation for measures 30, 31, and 32. The right hand plays a sequence of eighth notes: G4, A4, B4, C5, B4, A4, G4. The left hand plays a sequence of eighth notes: G3, A3, B3, C4, B3, A3, G3. Both hands end with a fermata over the final note.



于斯课堂
www.yusi.tv