

相思雨

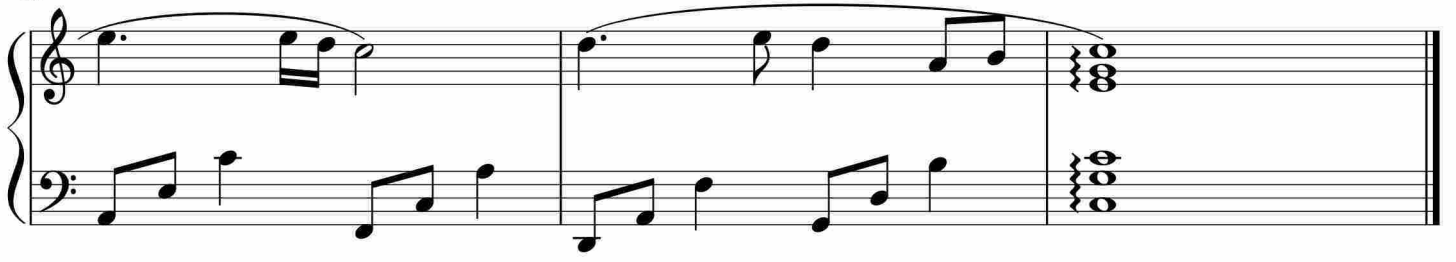
Measures 1-5 of the piano score for '相思雨'. The music is in 4/4 time. The right hand features a melodic line with eighth and sixteenth notes, often beamed together. The left hand provides a steady accompaniment with eighth notes and chords.

Measures 6-10 of the piano score. The melodic line continues with similar rhythmic patterns, including some longer note values. The accompaniment remains consistent with eighth-note figures.

Measures 11-15 of the piano score. The right hand melody shows some variation in phrasing, with a notable use of a slur over several notes. The left hand accompaniment continues to support the melody.

Measures 16-20 of the piano score. The melodic line becomes more active with sixteenth-note passages. The left hand accompaniment features a consistent eighth-note pattern.

Measures 21-25 of the piano score. The final section of this page shows the continuation of the melodic and accompanimental themes, ending with a final melodic flourish in the right hand.



于斯课堂
www.yusi.tv