

Brainiac Maniac

于斯课堂
www.yusi.tv

laser crabs

Piano

Piano chorus

Piano chorus high

Organ

Guitar chunk

guitar chunk chorus

Analog Power

AP c1

Acoustic Bass

Harp

Strings I

Strings II

SH-101 Bass

2

lc.

Pno.

Org.

Gtr.

AP.

AB.

Hp.

StrI.

StrII.

SB.

The musical score for page 2 is arranged in a multi-staff format. The instruments and their parts are as follows:

- lc.**: A single staff with a double bar line at the beginning, indicating it is silent.
- Pno.**: Piano part with a treble and bass clef. The treble clef has a melodic line with eighth notes and rests. The bass clef is silent.
- Org.**: Organ part with a treble clef, silent.
- Gtr.**: Guitar part with a treble clef, featuring a rhythmic pattern with eighth notes and triplets.
- AP.**: Alto Saxophone part with a treble clef, featuring a rhythmic pattern with eighth notes and rests.
- AB.**: Alto Bass part with a bass clef, silent.
- Hp.**: Harp part with a treble clef, silent.
- StrI.**: String I part with a treble clef, silent.
- StrII.**: String II part with a treble clef, silent.
- SB.**: String Bass part with a bass clef, silent.

A large, light blue watermark reading "www.52jazz.com" is overlaid diagonally across the center of the page.

lc.

Pno.

Org.

Gtr.

AP.

AB.

Hp.

StrI.

StrII.

4 SB.

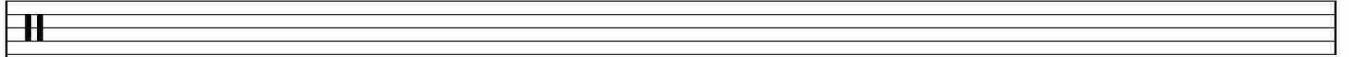
The musical score for page 4 is arranged in a multi-staff format. The instruments and their parts are as follows:

- lc.**: A single staff with a whole rest.
- Pno.**: Piano part with treble and bass staves. The treble staff contains a melodic line with eighth and sixteenth notes, while the bass staff has a whole rest.
- Org.**: Organ part with a treble staff containing a whole rest.
- Gtr.**: Guitar part with a treble staff. It features a melodic line with a triplet of eighth notes.
- AP.**: Two staves for a pair of instruments (likely Accordion or Piano). The top staff has a whole rest followed by a melodic line. The bottom staff has a whole rest followed by a melodic line.
- AB.**: Bassoon part with a bass staff containing a whole rest.
- Hp.**: Harp part with a treble staff containing a whole rest.
- StrI.**: First String part with a treble staff containing a whole rest.
- StrII.**: Second String part with a treble staff containing a whole rest.
- 4 SB.**: Fourth Saxophone part with a treble staff containing a whole rest.

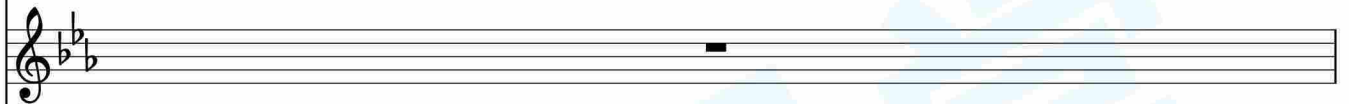
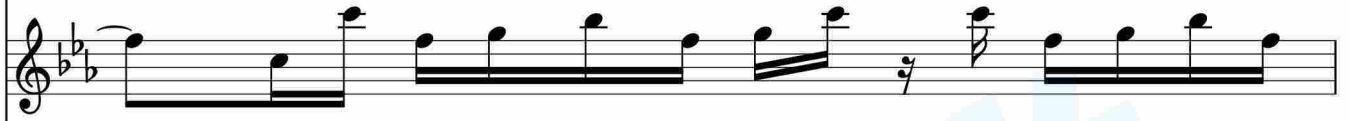
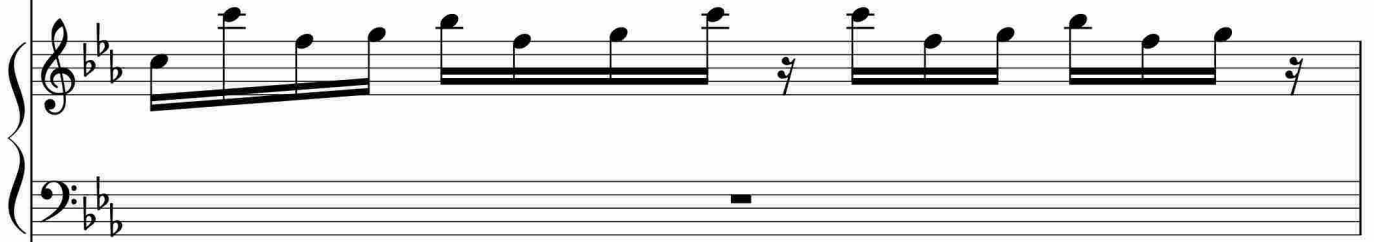
A large, light blue watermark reading "www.52jazz.com" is overlaid diagonally across the center of the page.



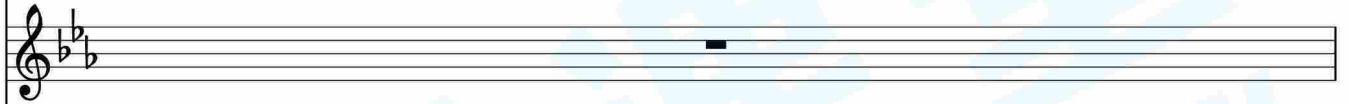
Ic.



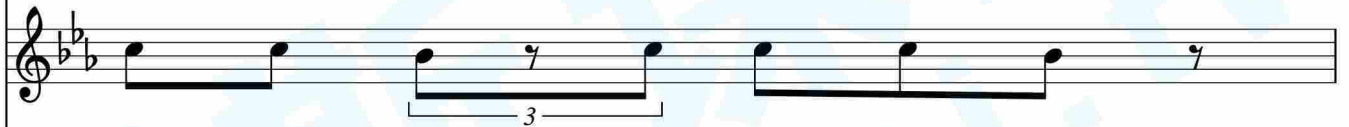
Pno.



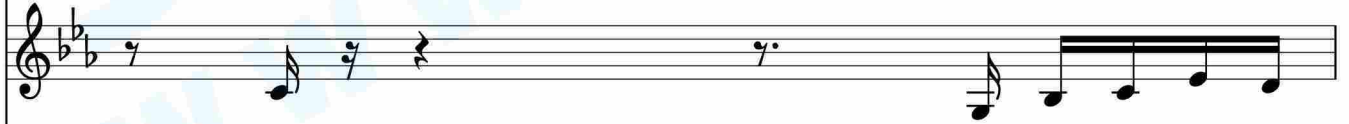
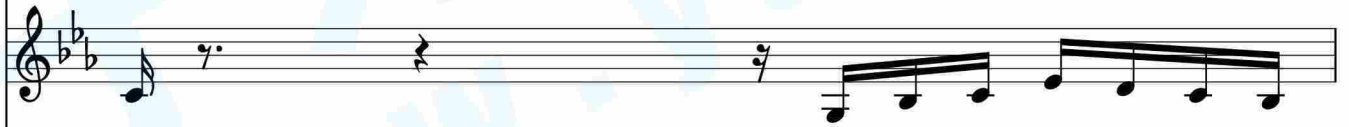
Org.



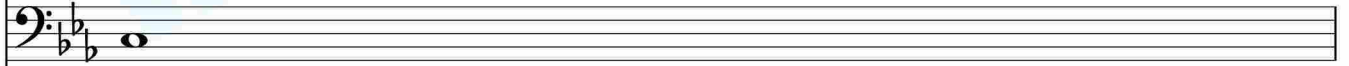
Gtr.



AP.



AB.



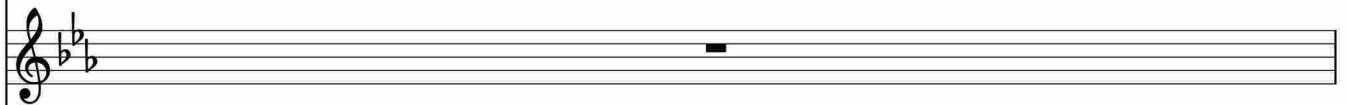
Hp.



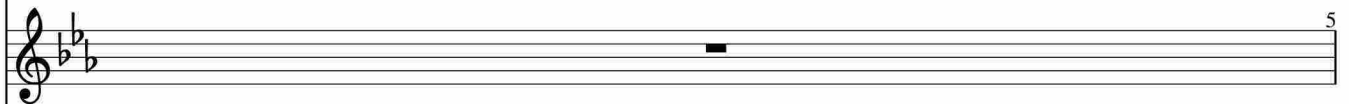
StrI.

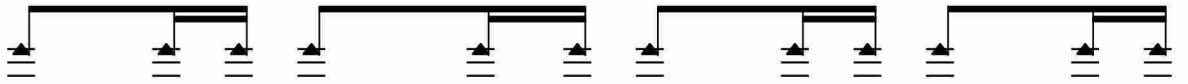


StrII.

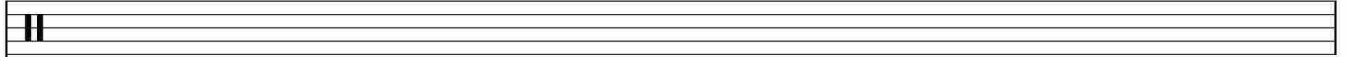


SB.

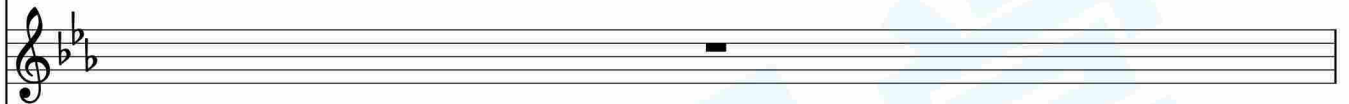
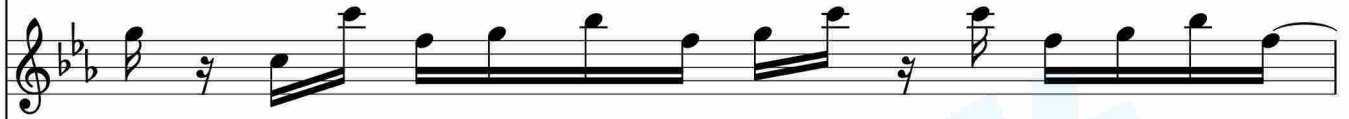
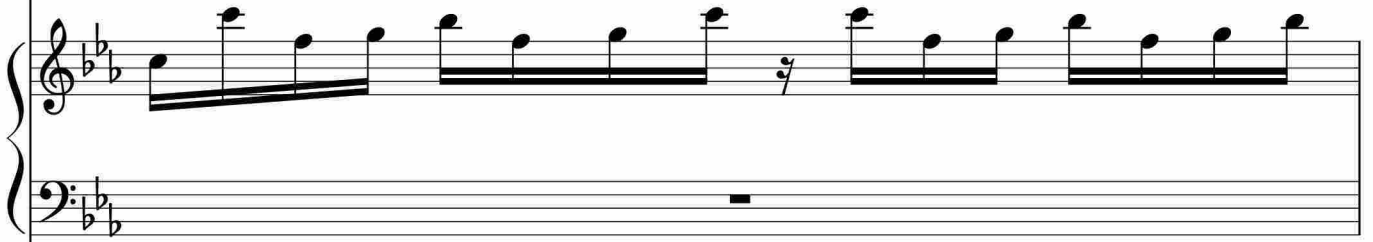




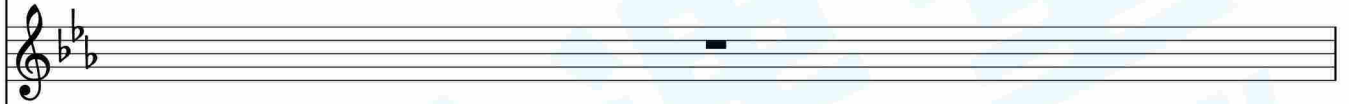
lc.



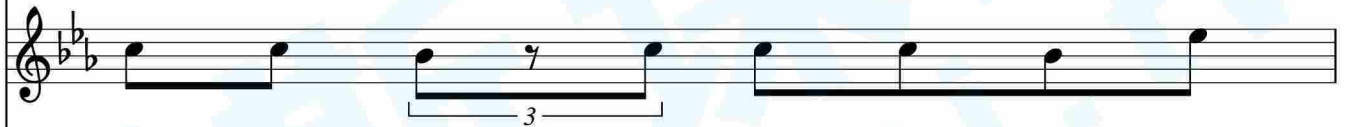
Pno.



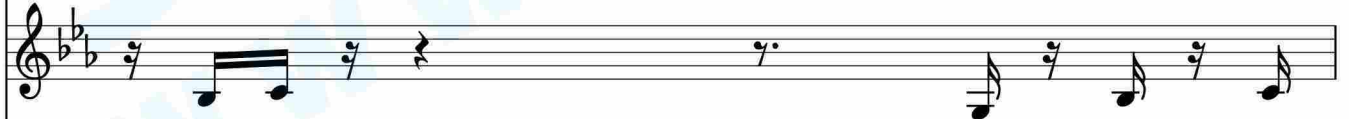
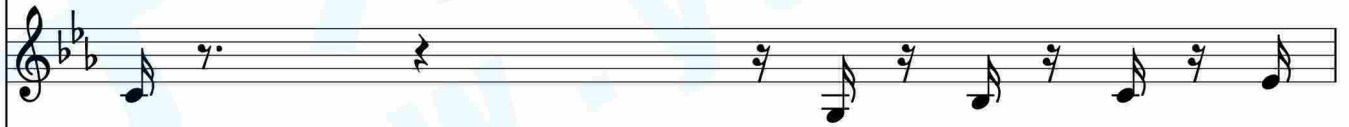
Org.



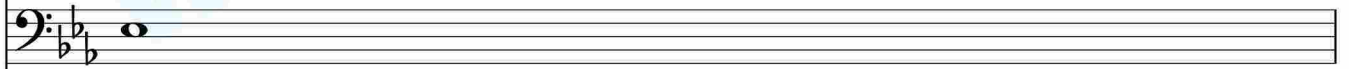
Gtr.



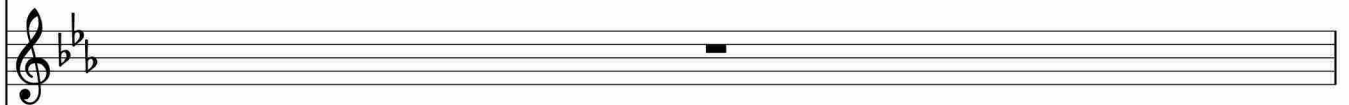
AP.



AB.



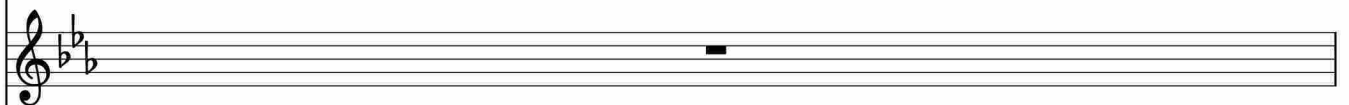
Hp.



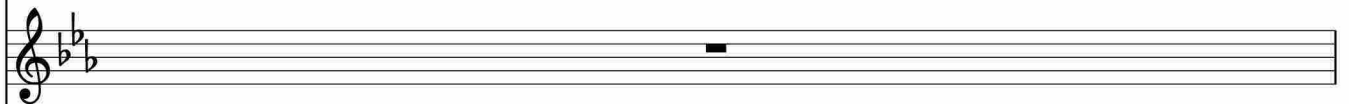
StrI.



StrII.

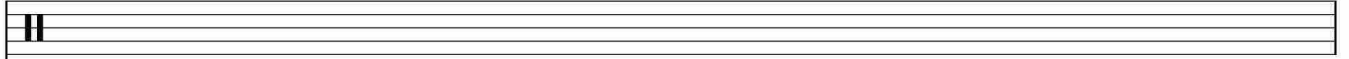


6
SB.

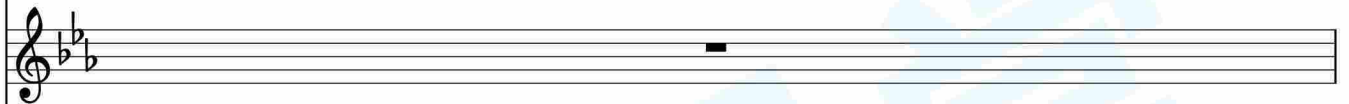
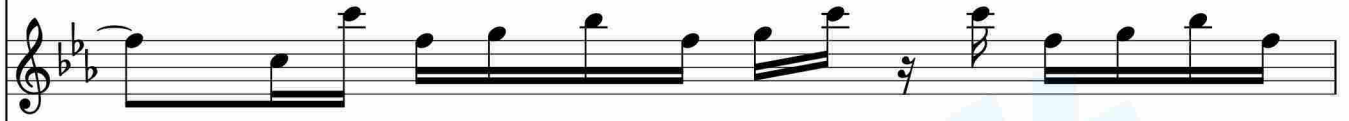
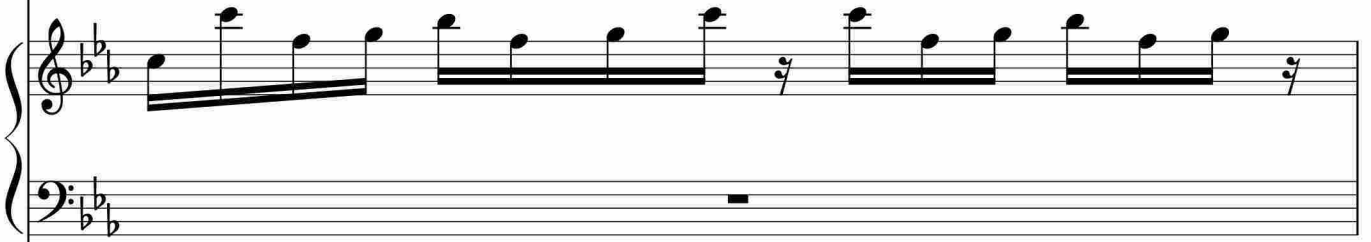




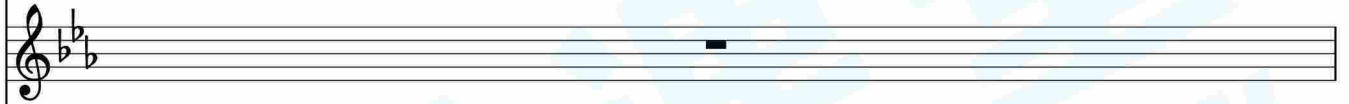
Ic.



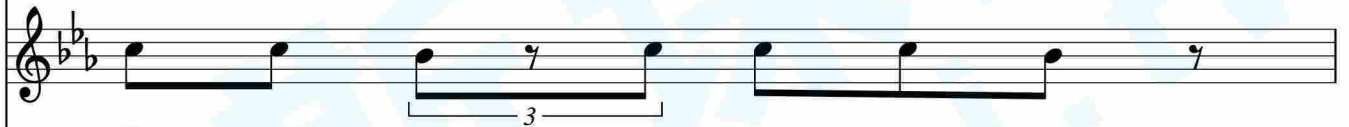
Pno.



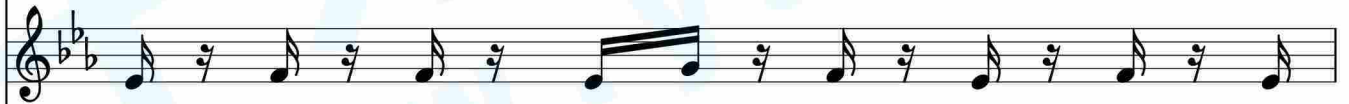
Org.



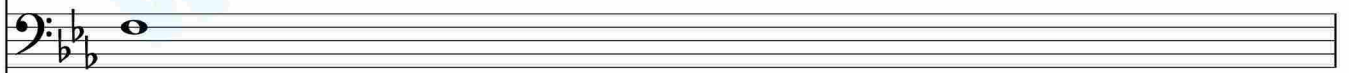
Gtr.



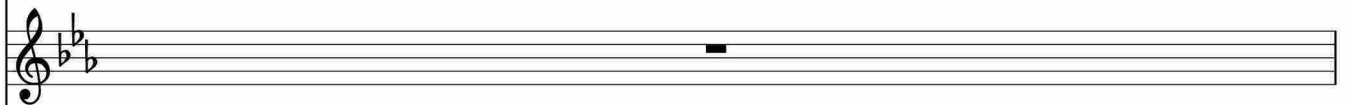
AP.



AB.



Hp.



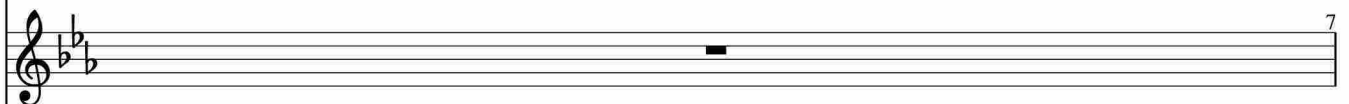
StrI.



StrII.

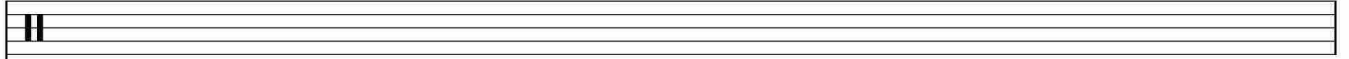


SB.

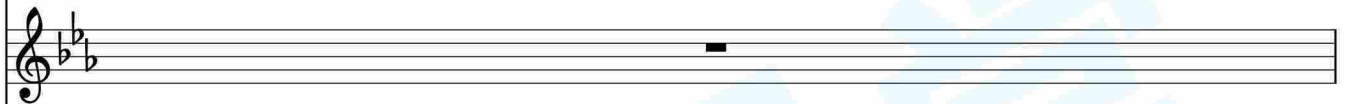
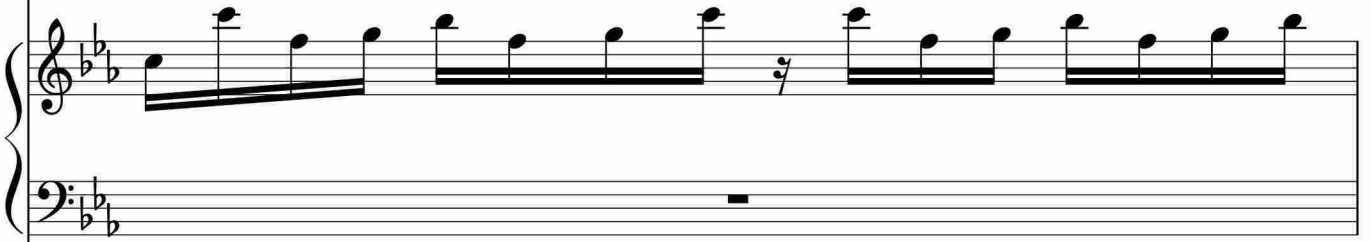




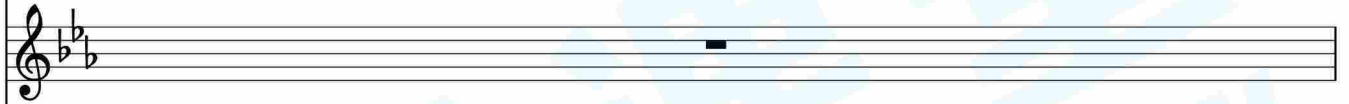
Ic.



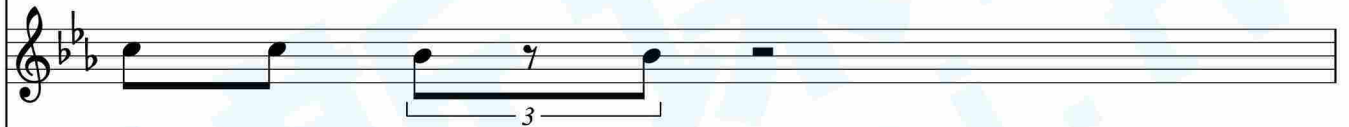
Pno.



Org.



Gtr.



AP.



AB.



Hp.



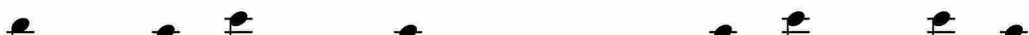
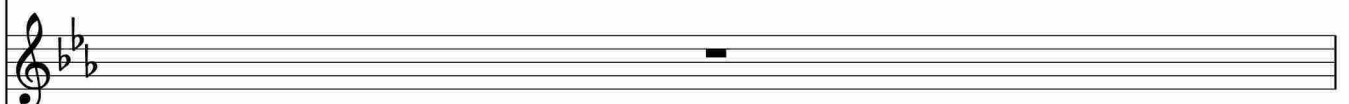
StrI.



StrII.

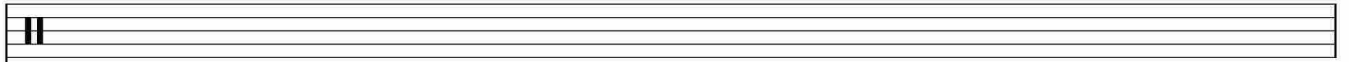


SB.

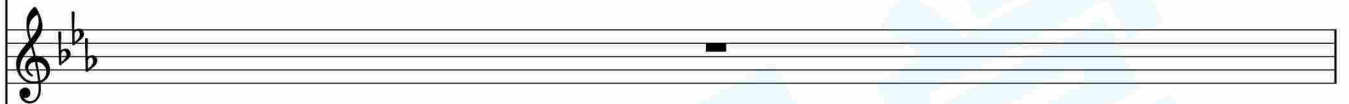
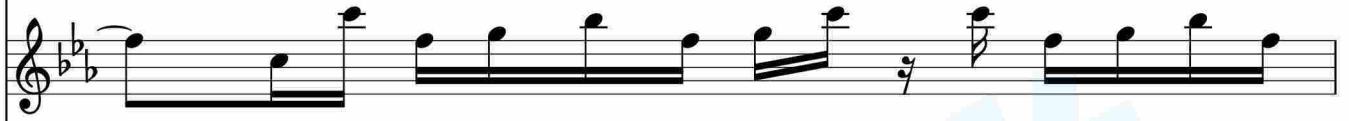
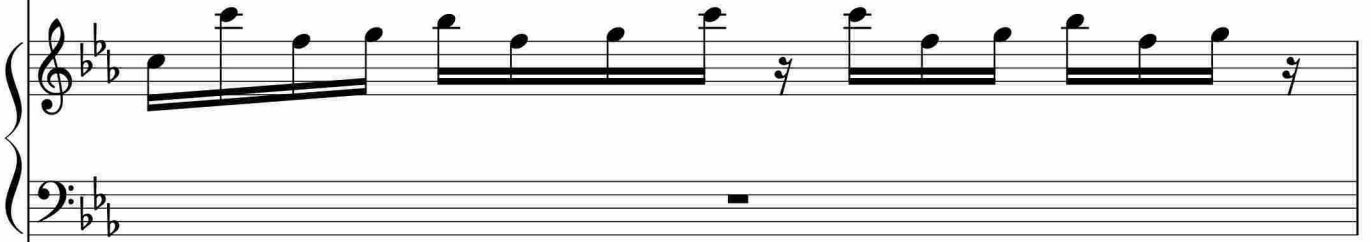




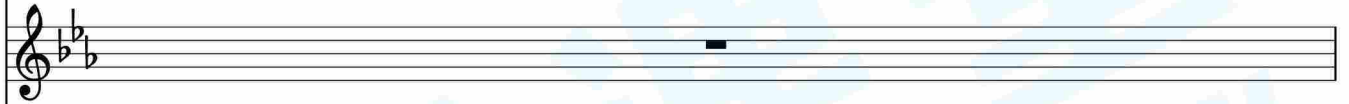
Ic.



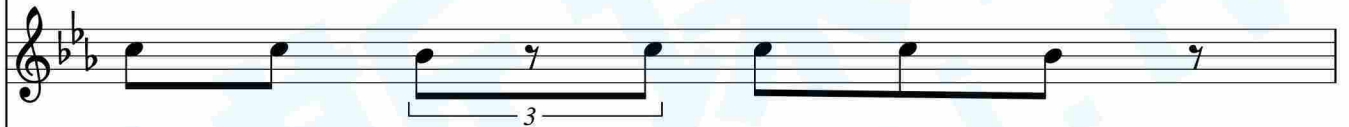
Pno.



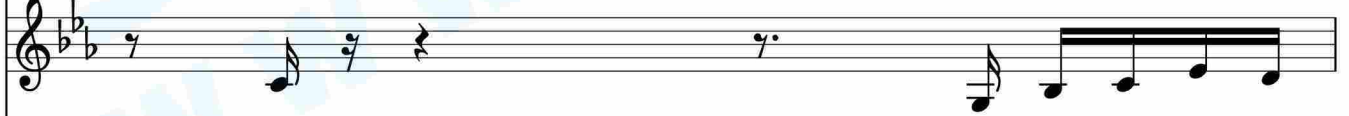
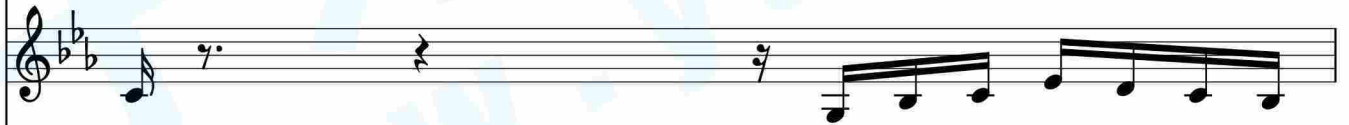
Org.



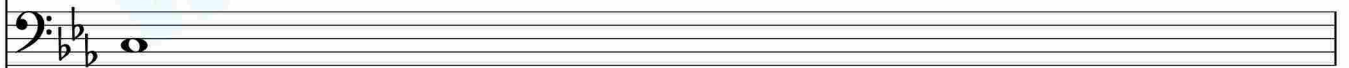
Gtr.



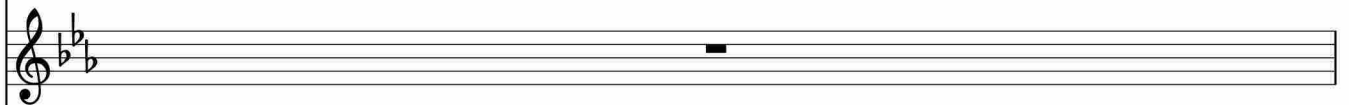
AP.



AB.



Hp.



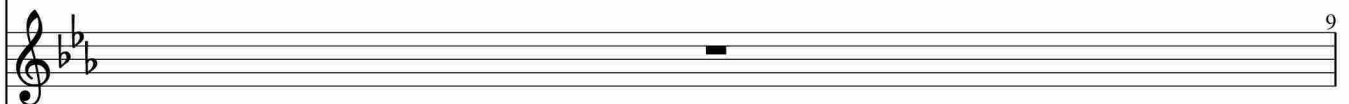
StrI.



StrII.



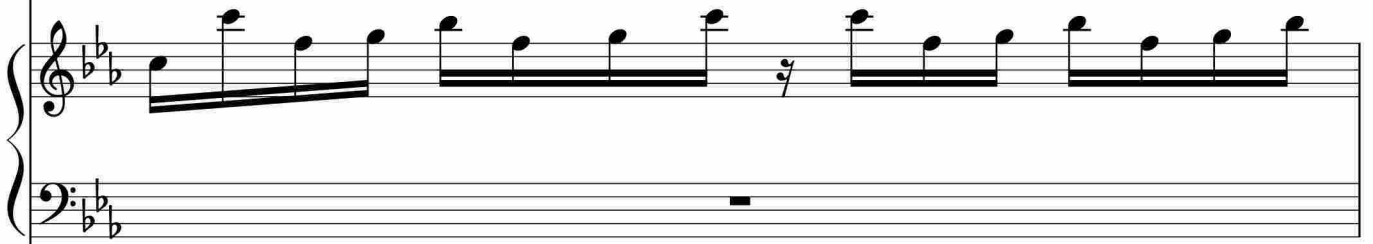
SB.



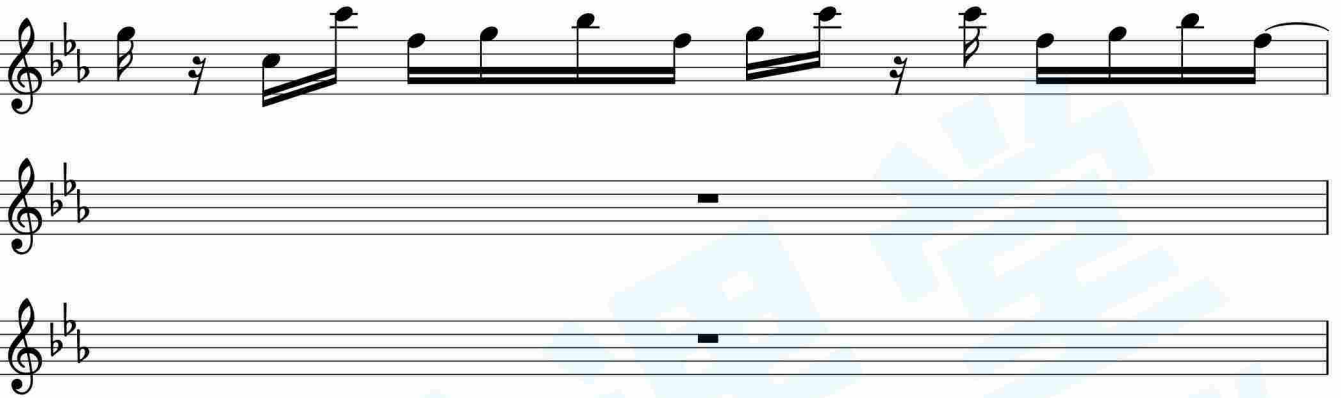


lc.

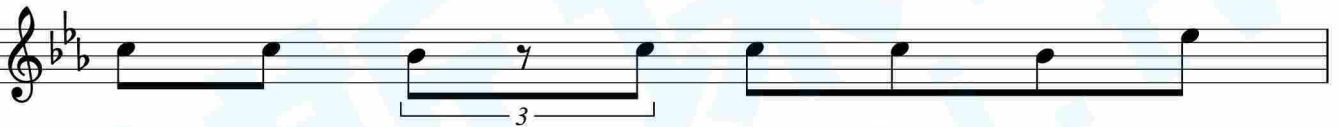
Pno.



Org.



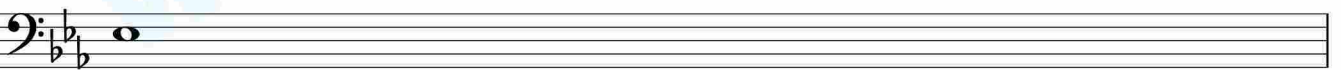
Gtr.



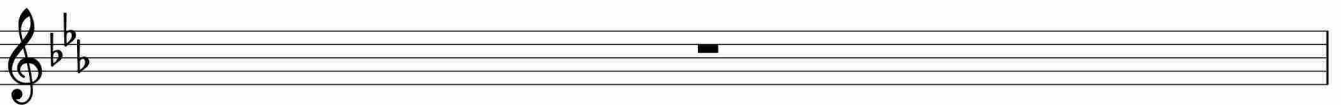
AP.



AB.



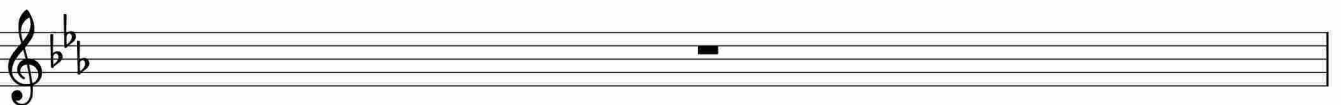
Hp.



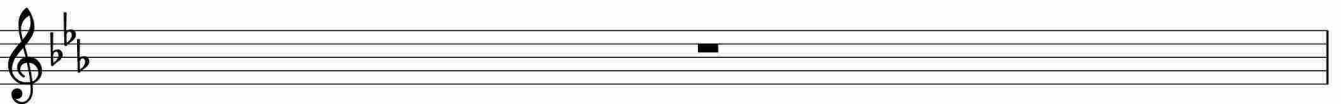
StrI.

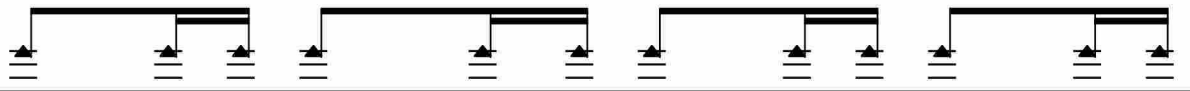


StrII.

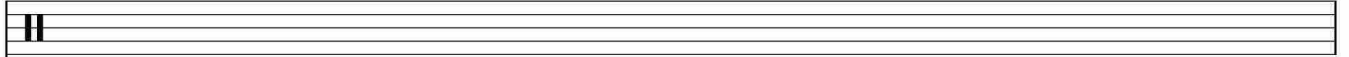


10
SB.

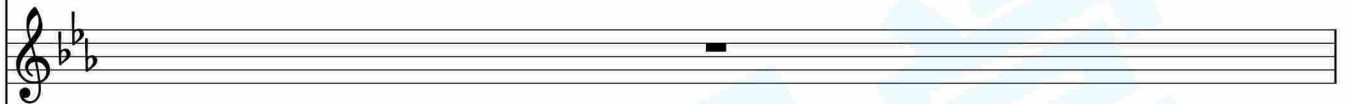
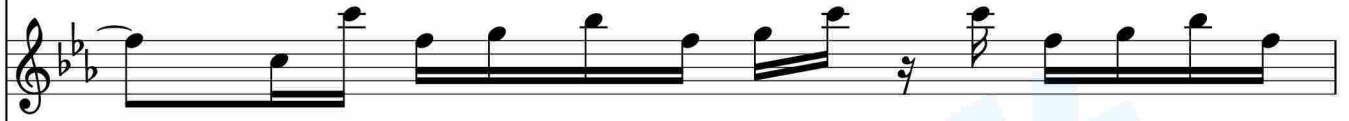
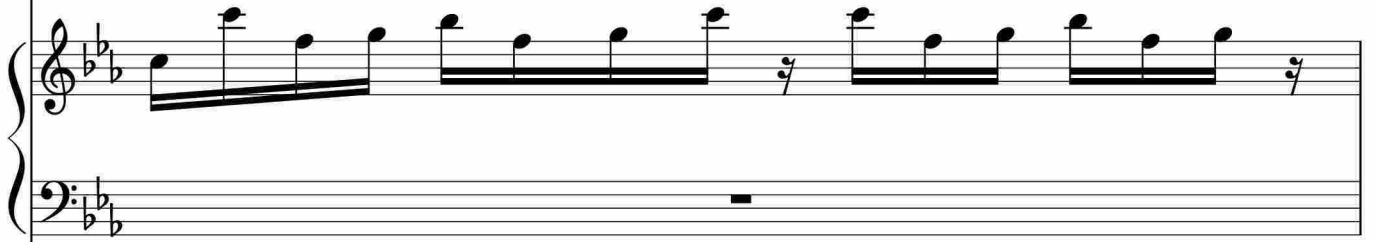




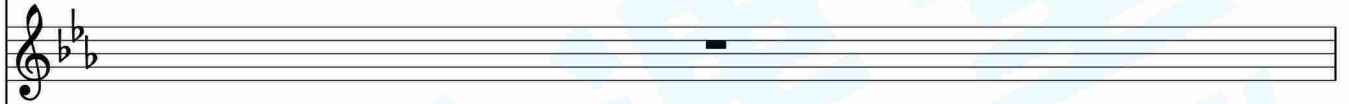
lc.



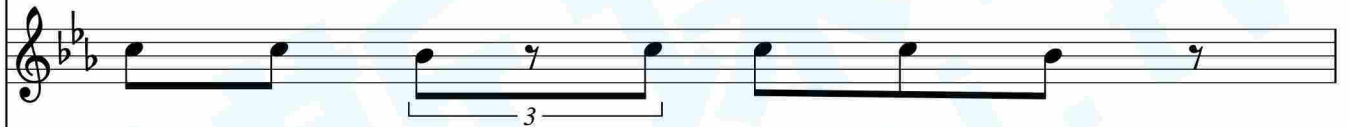
Pno.



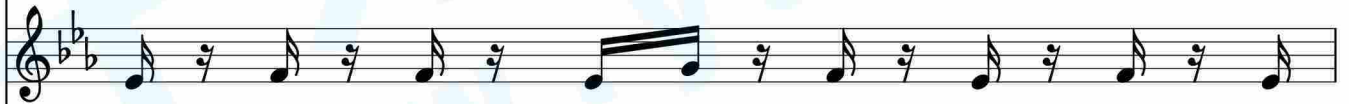
Org.



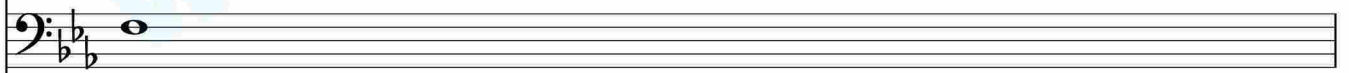
Gtr.



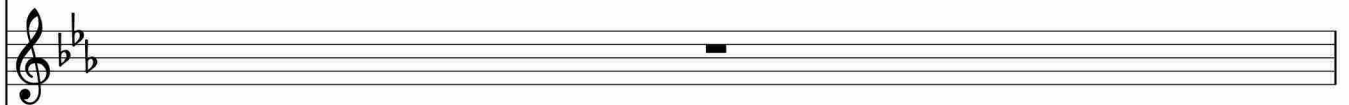
AP.



AB.



Hp.



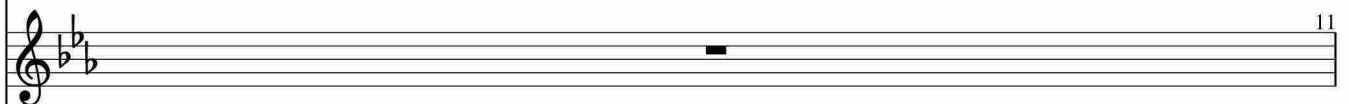
StrI.



StrII.

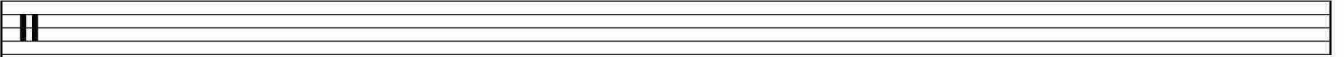


SB.

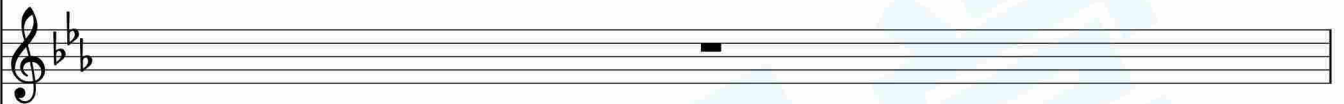
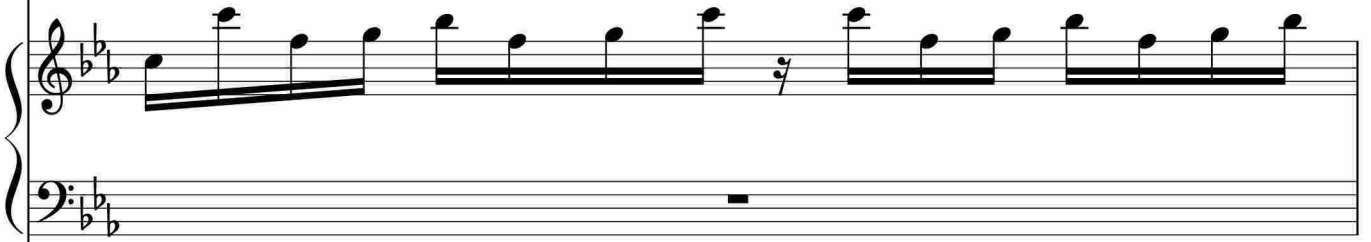




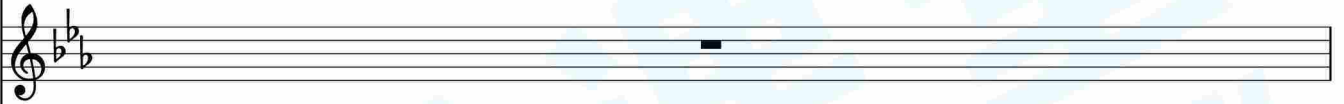
Ic.



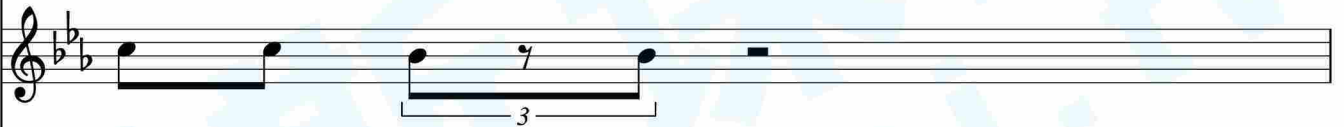
Pno.



Org.



Gtr.



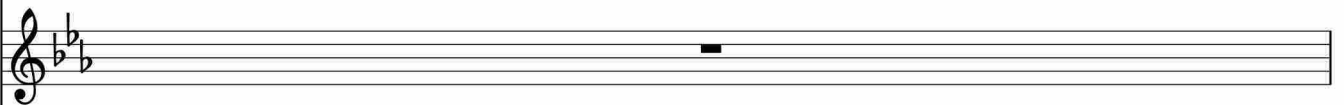
AP.



AB.



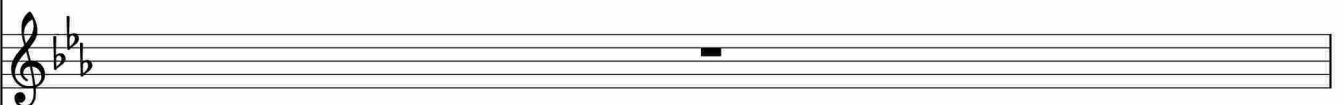
Hp.



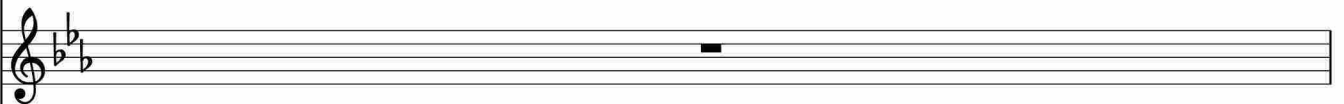
StrI.



StrII.



SB.

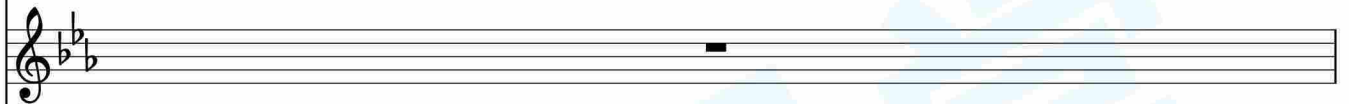
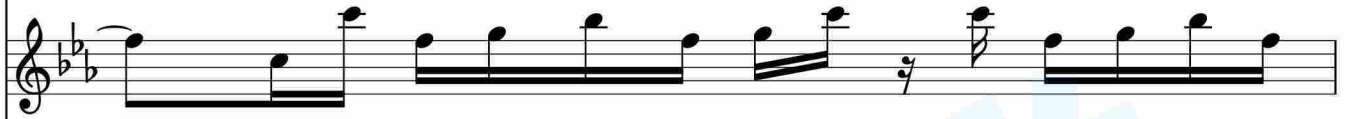
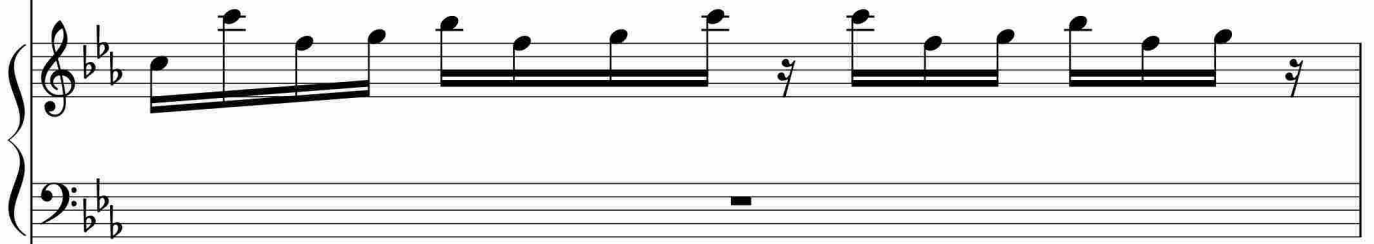




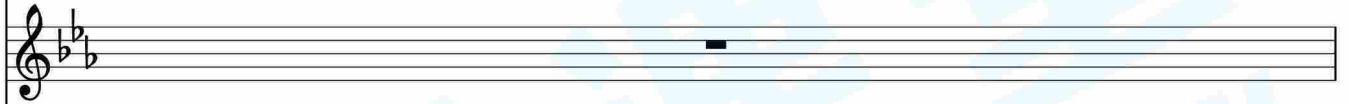
Ic.



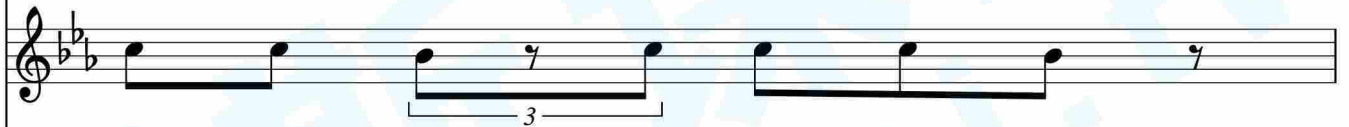
Pno.



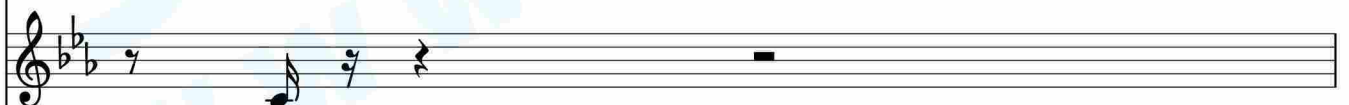
Org.



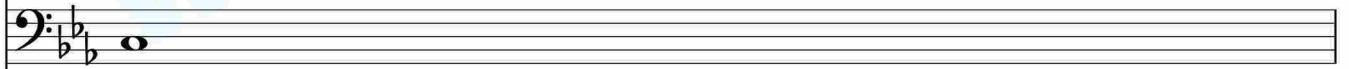
Gtr.



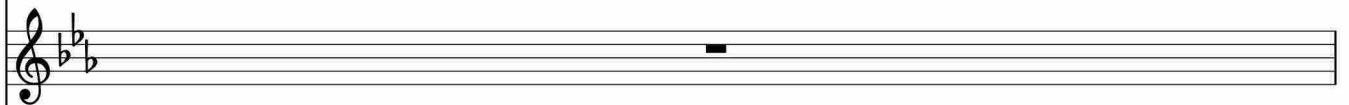
AP.



AB.



Hp.



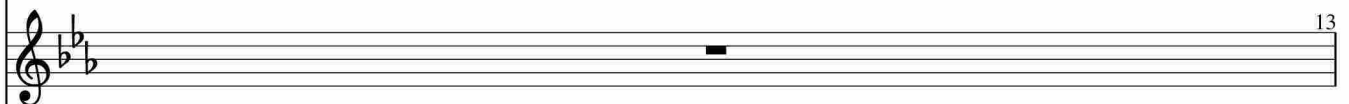
StrI.

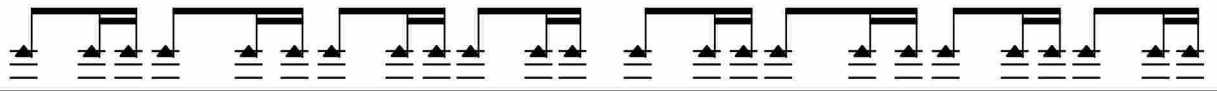


StrII.



SB.





lc.

Empty musical staff for the conductor (lc.).

Pno.

Piano (Pno.) part, including treble and bass staves with musical notation.

Musical staff with notation, likely for a woodwind instrument.

Musical staff with notation, likely for a woodwind instrument.

Org.

Organ (Org.) part, including a single musical staff with notation.

Gtr.

Guitar (Gtr.) part, including a single musical staff with notation and triplets.

Musical staff with notation, likely for a woodwind instrument.

AP.

AP (Alto Saxophone) part, including a single musical staff with notation.

Musical staff with notation, likely for a woodwind instrument.

AB.

AB (Alto Saxophone) part, including a single musical staff with notation.

Hp.

Hammond Organ (Hp.) part, including a single musical staff with notation.

StrI.

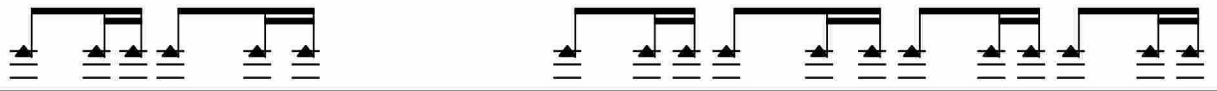
String I (StrI.) part, including a single musical staff with notation.

StrII.

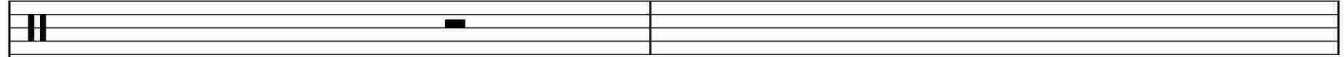
String II (StrII.) part, including a single musical staff with notation.

SB.

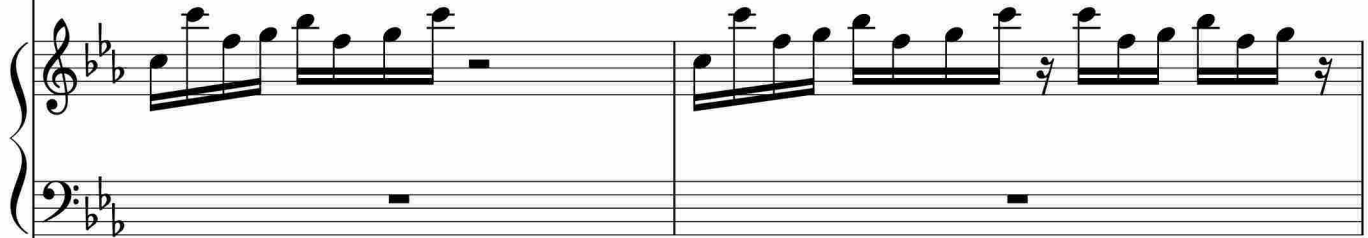
SB (Soprano Saxophone) part, including a single musical staff with notation.



Ic.



Pno.



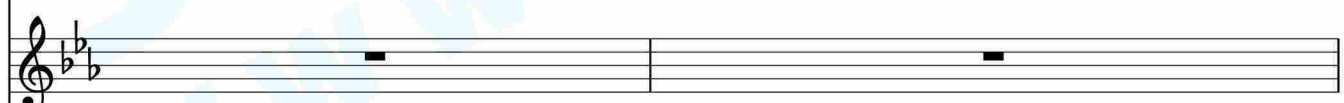
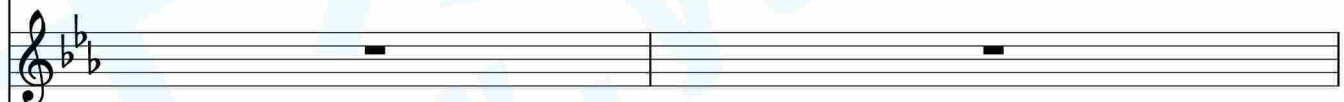
Org.



Gtr.



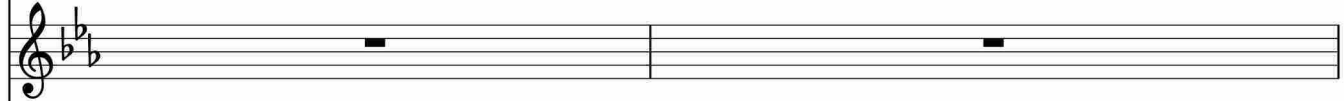
AP.



AB.



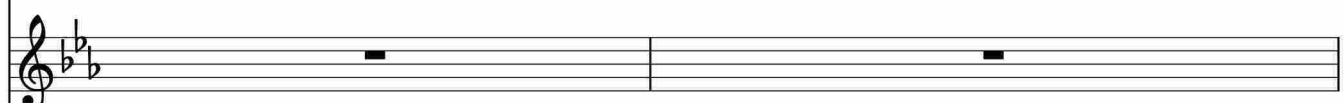
Hp.



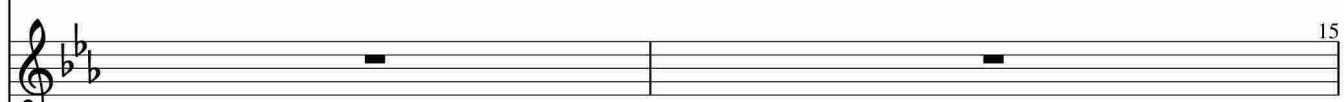
StrI.



StrII.

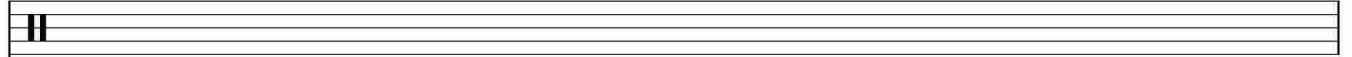


SB.

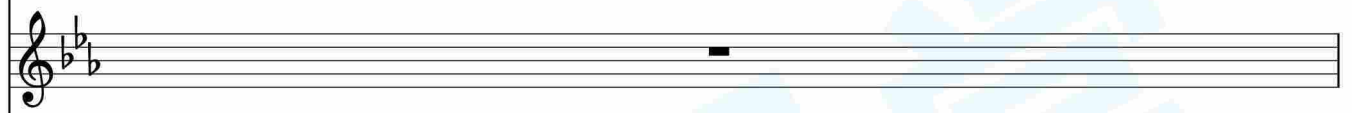
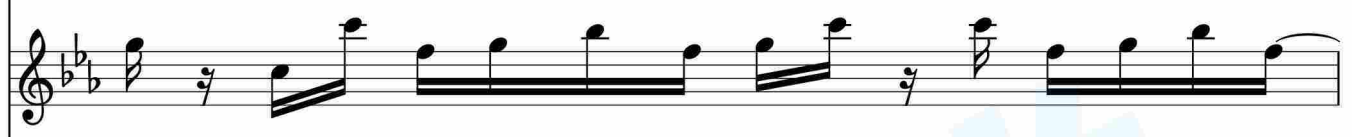
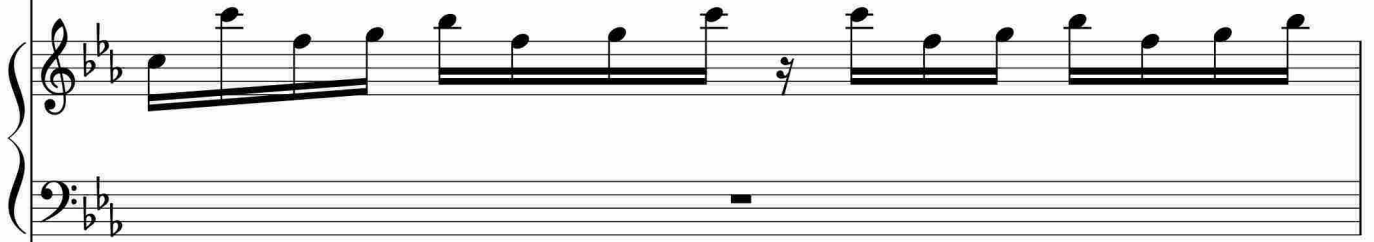




Ic.



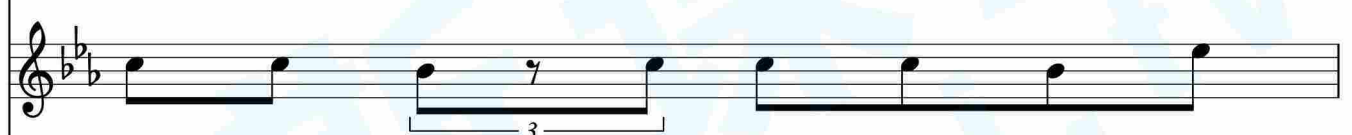
Pno.



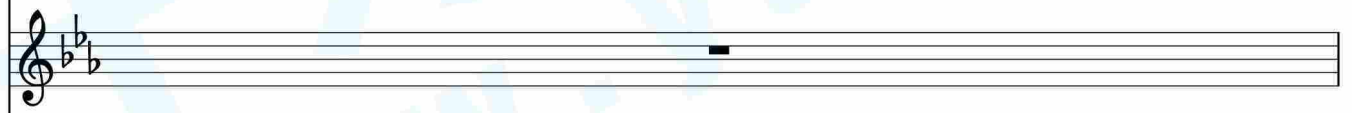
Org.



Gtr.



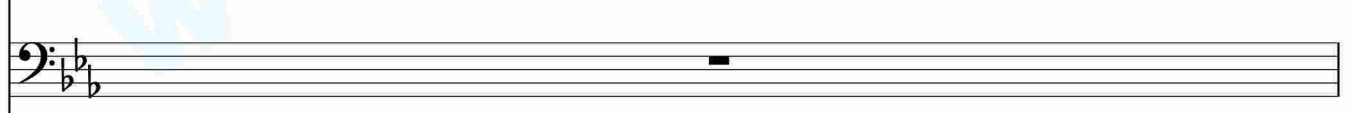
AP.



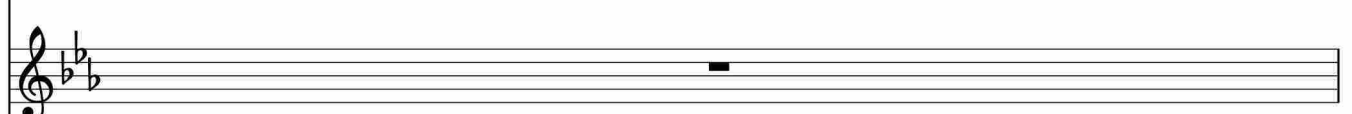
AB.



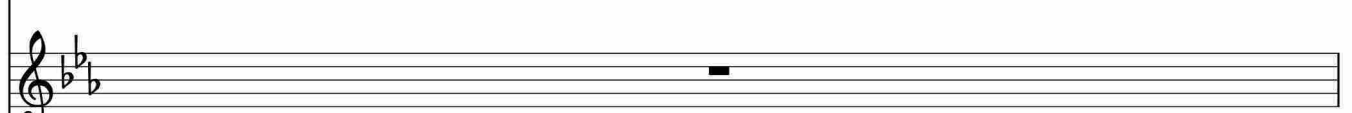
Hp.



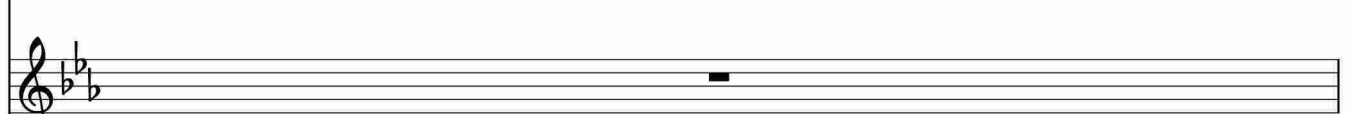
StrI.

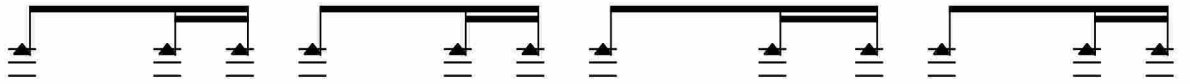


StrII.

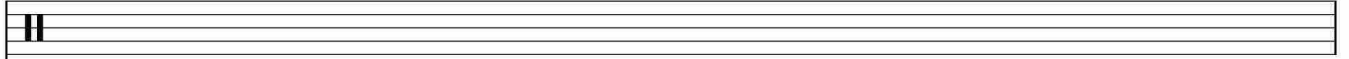


16 SB.

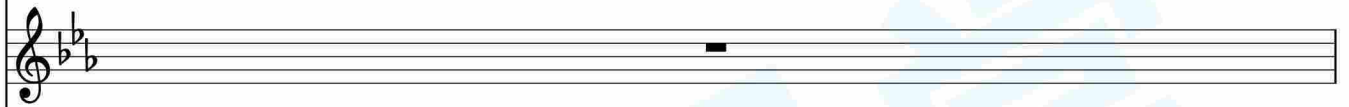
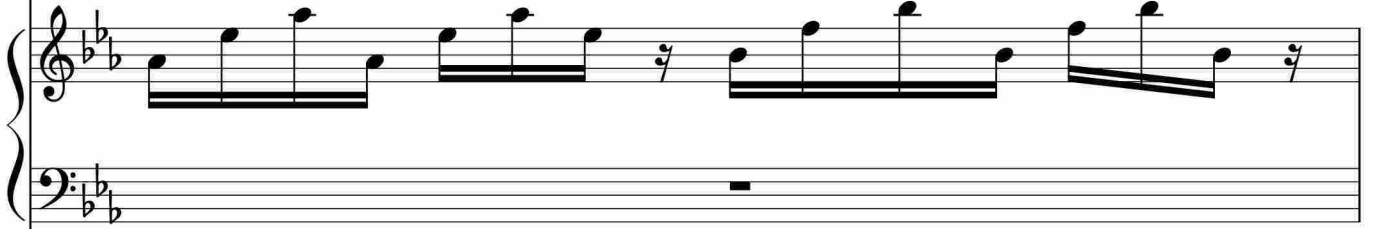




lc.



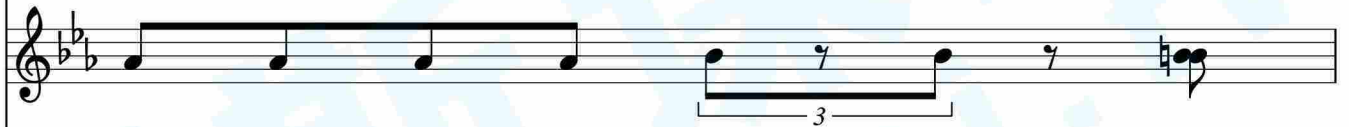
Pno.



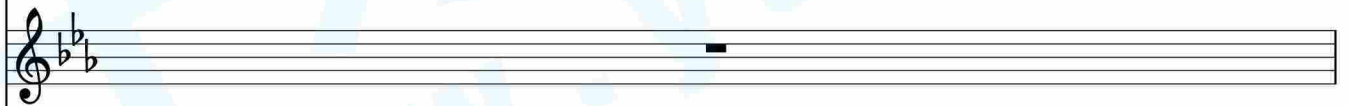
Org.



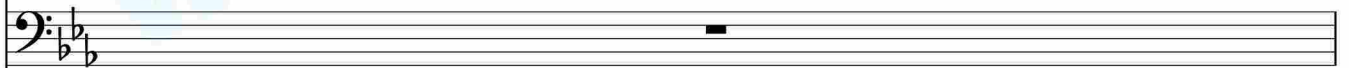
Gtr.



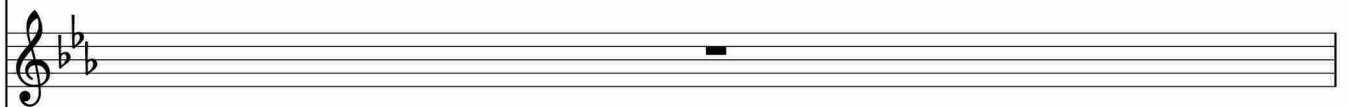
AP.



AB.



Hp.



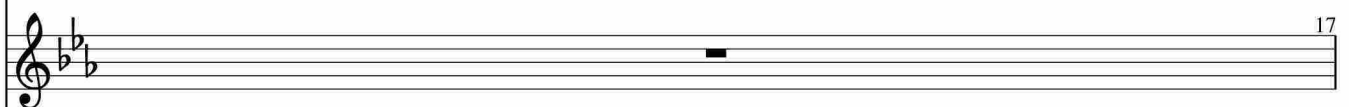
StrI.



StrII.

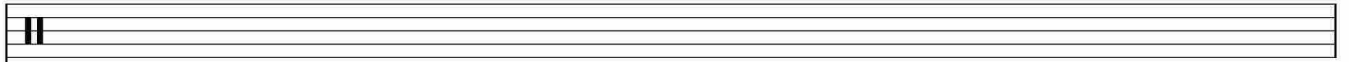


SB.

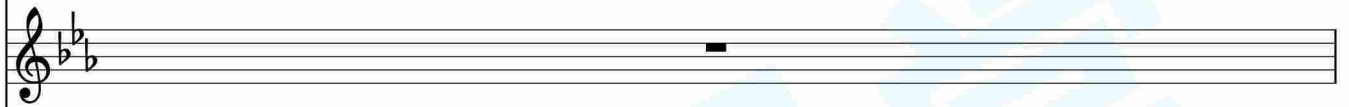
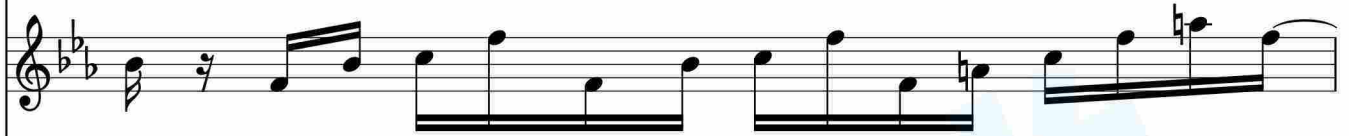
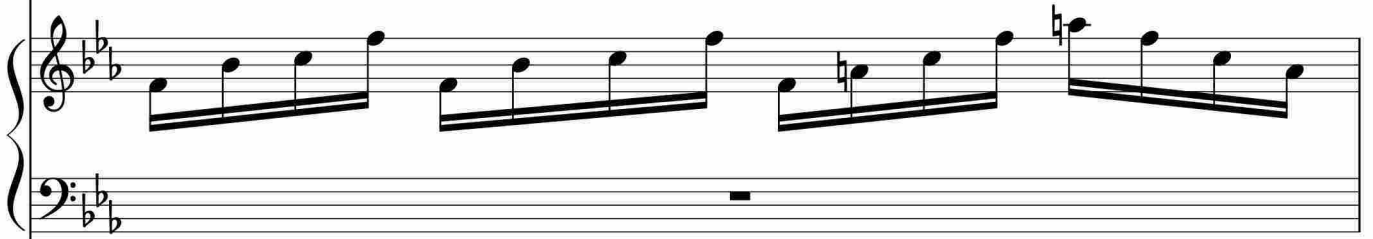




Ic.



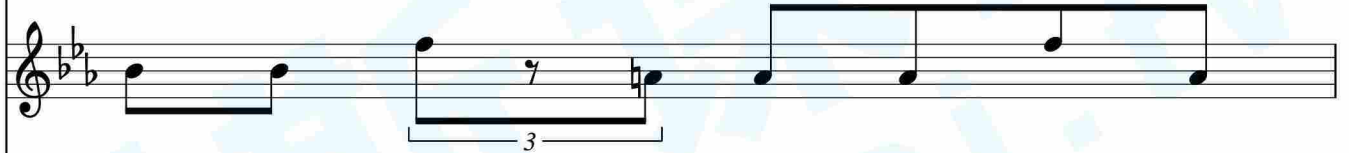
Pno.



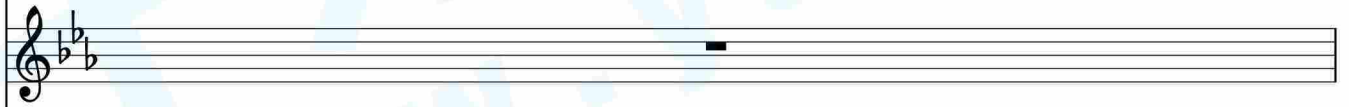
Org.



Gtr.



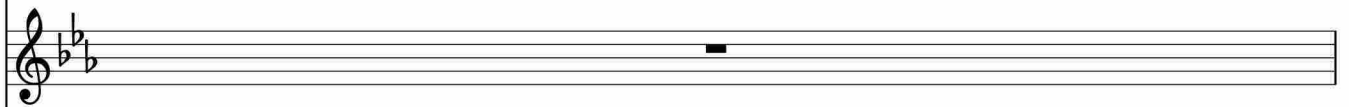
AP.



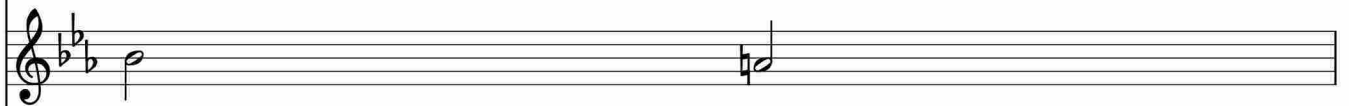
AB.



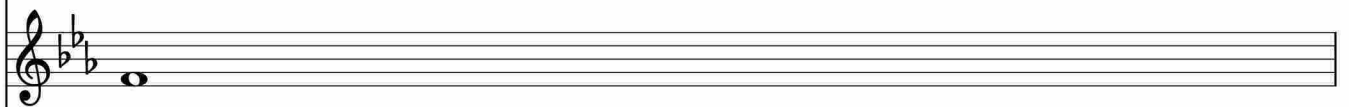
Hp.



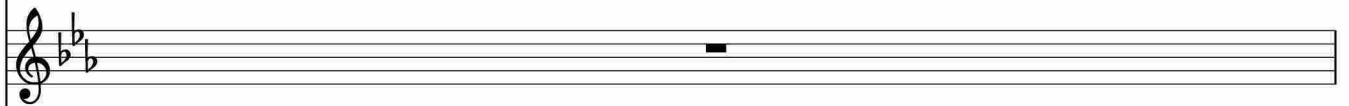
StrI.



StrII.

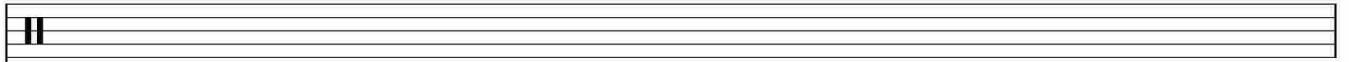


SB.

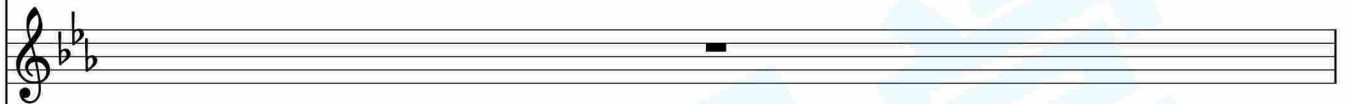
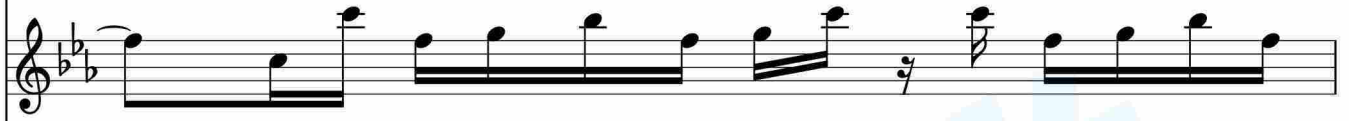
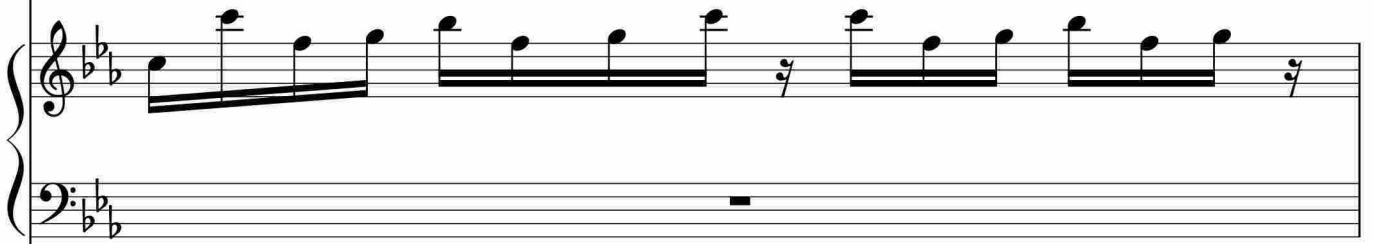




lc.



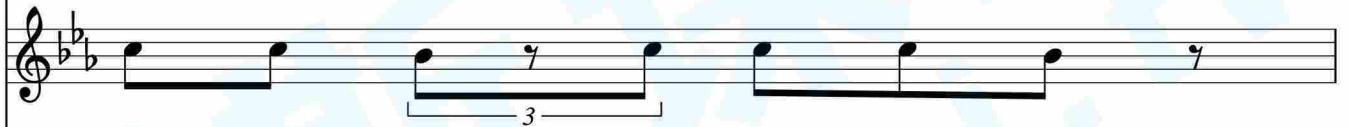
Pno.



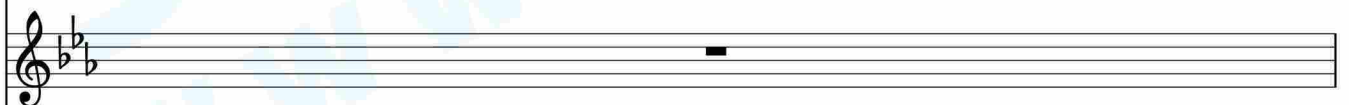
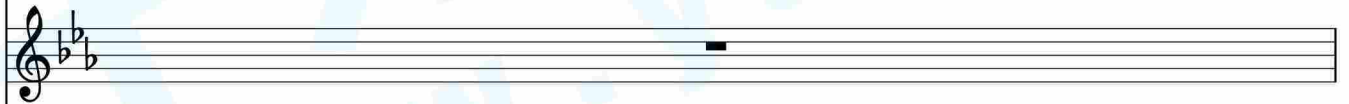
Org.



Gtr.



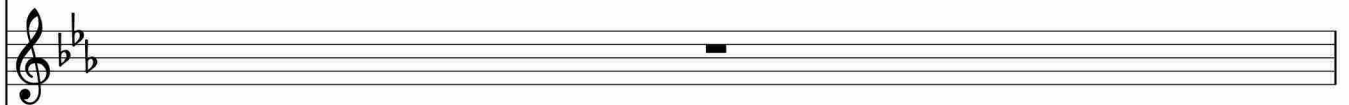
AP.



AB.



Hp.



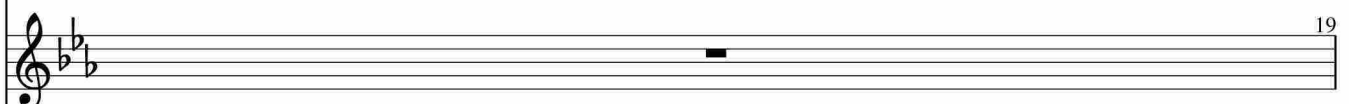
StrI.



StrII.

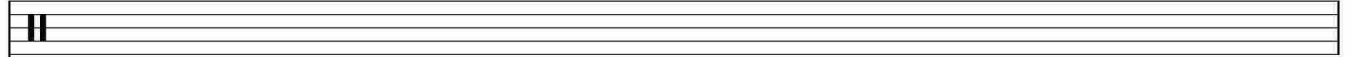


SB.

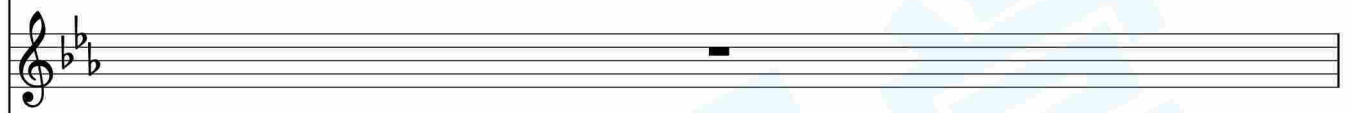
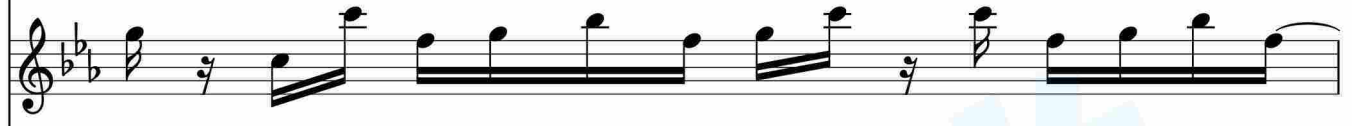
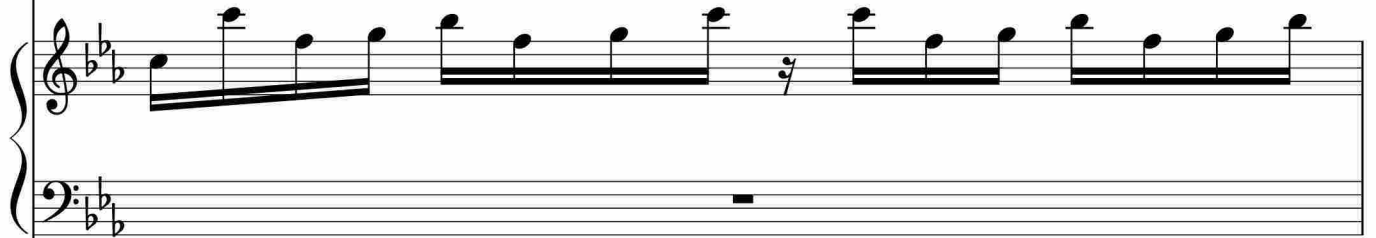




Ic.



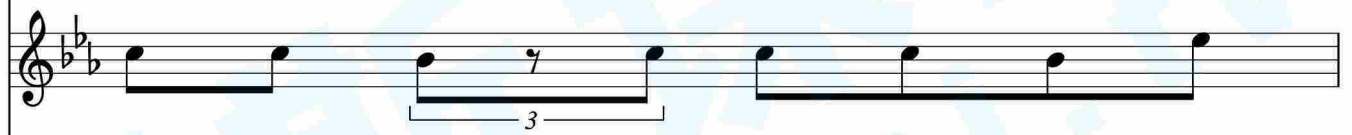
Pno.



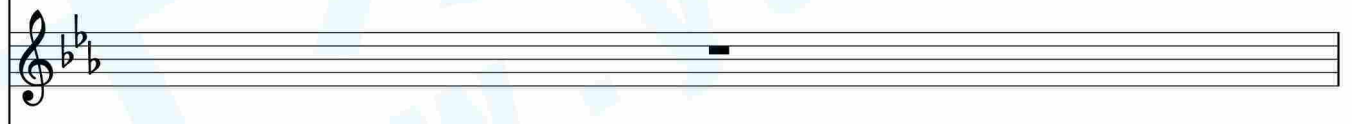
Org.



Gtr.



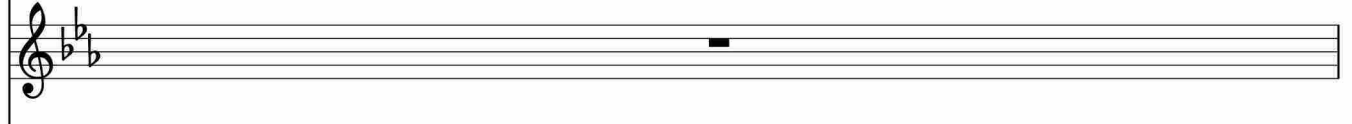
AP.



AB.



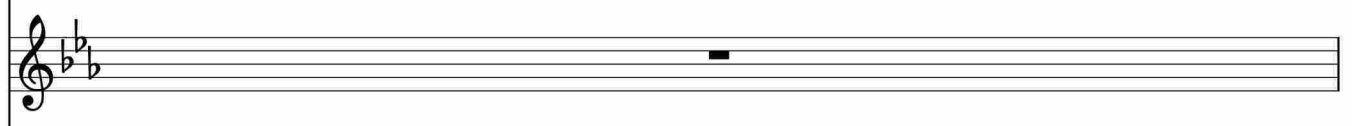
Hp.



StrI.

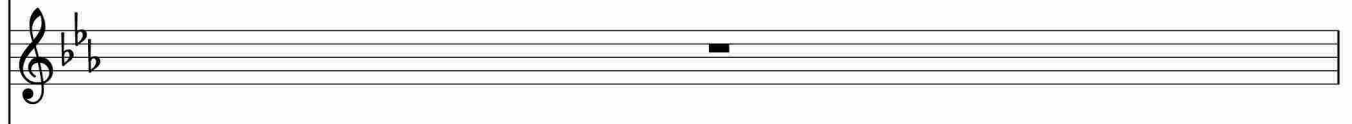


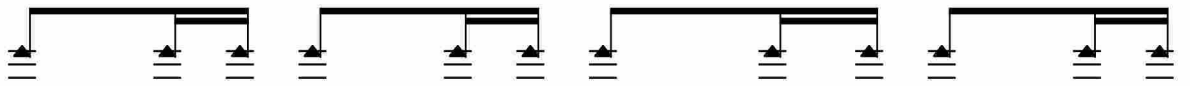
StrII.



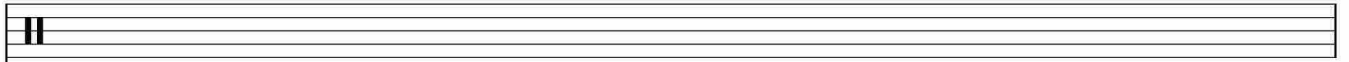
20

SB.

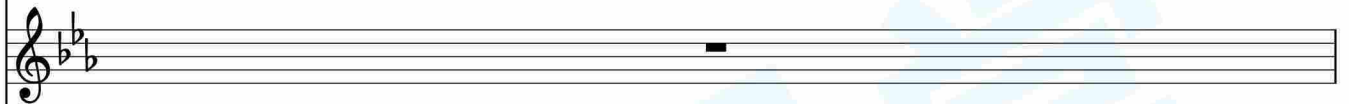




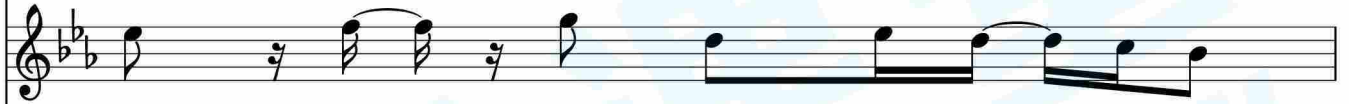
lc.



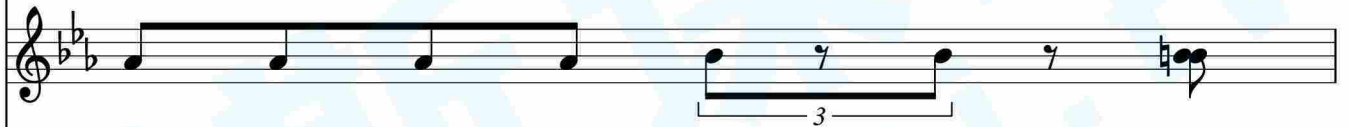
Pno.



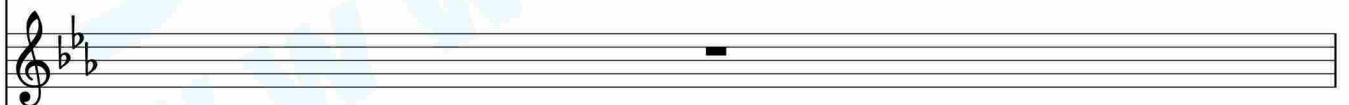
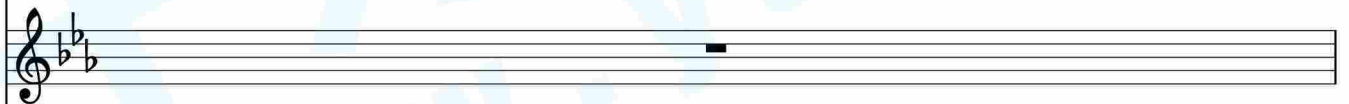
Org.



Gtr.



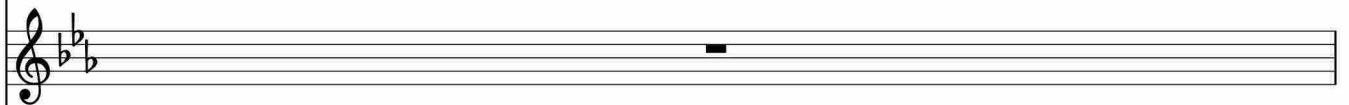
AP.



AB.



Hp.



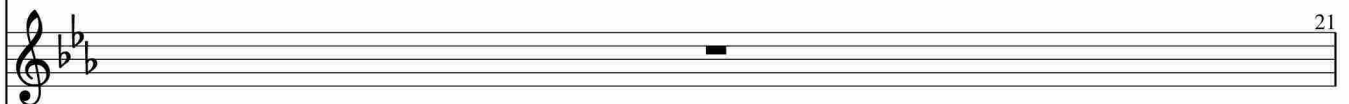
StrI.



StrII.

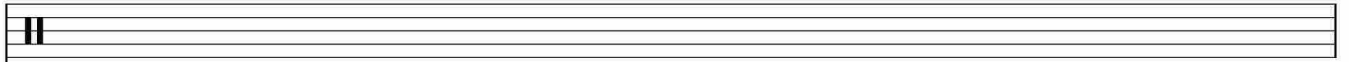


SB.

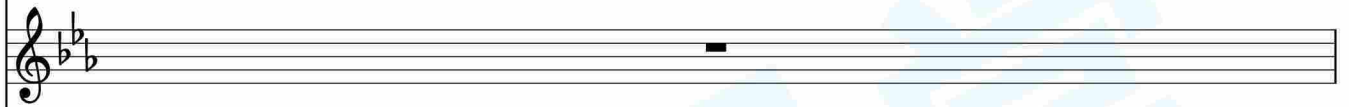
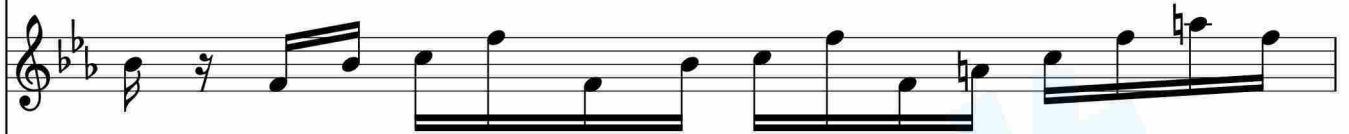
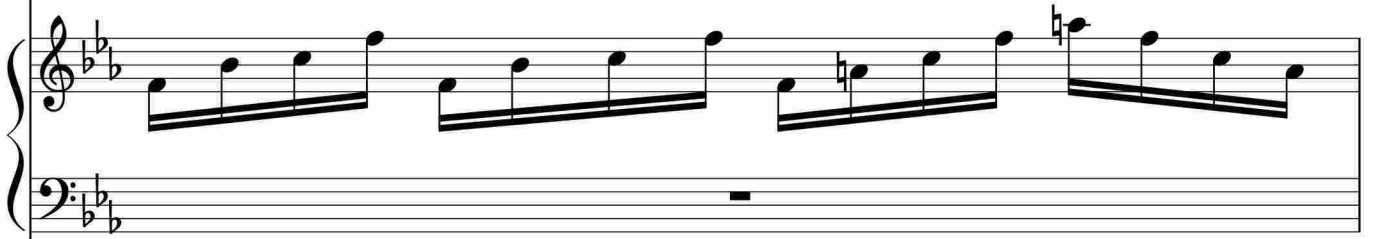




Ic.



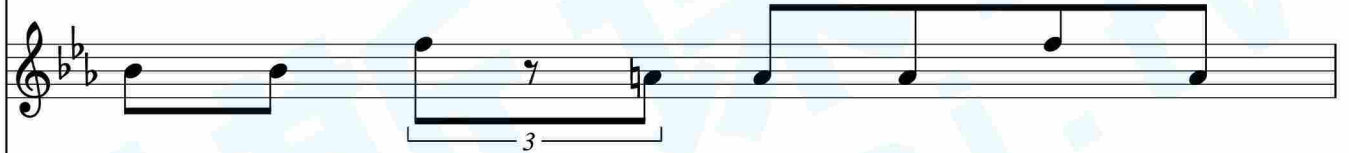
Pno.



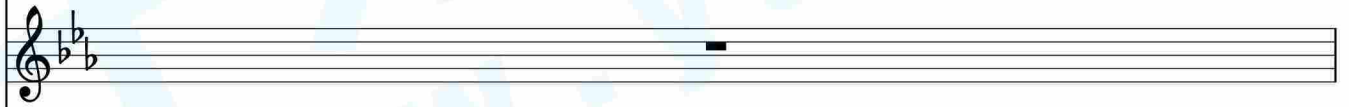
Org.



Gtr.



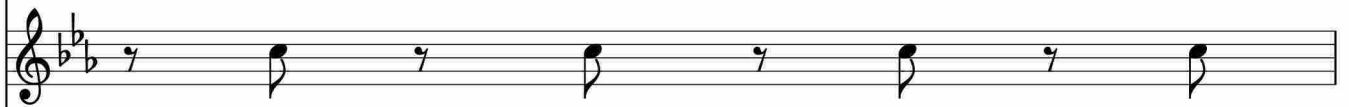
AP.



AB.



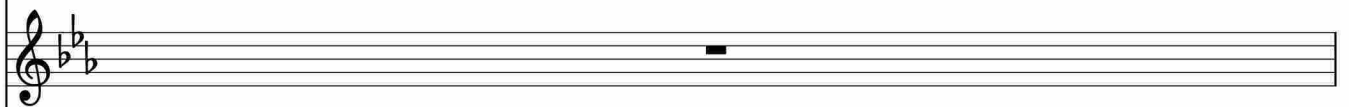
Hp.



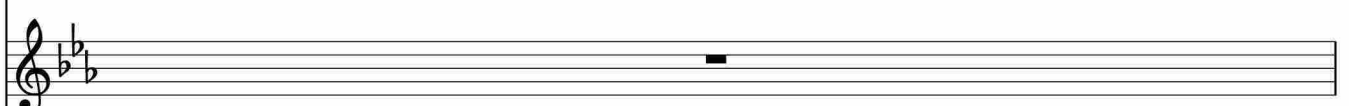
StrI.

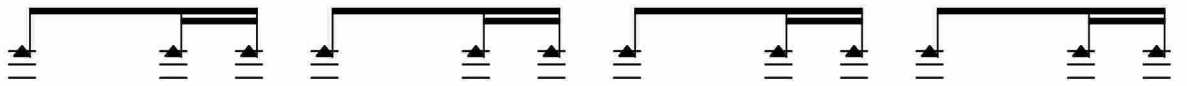


StrII.

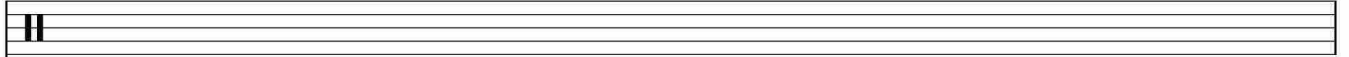


SB.

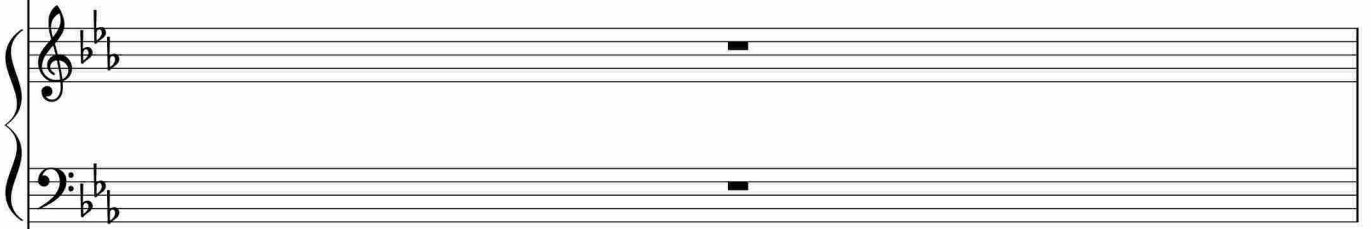




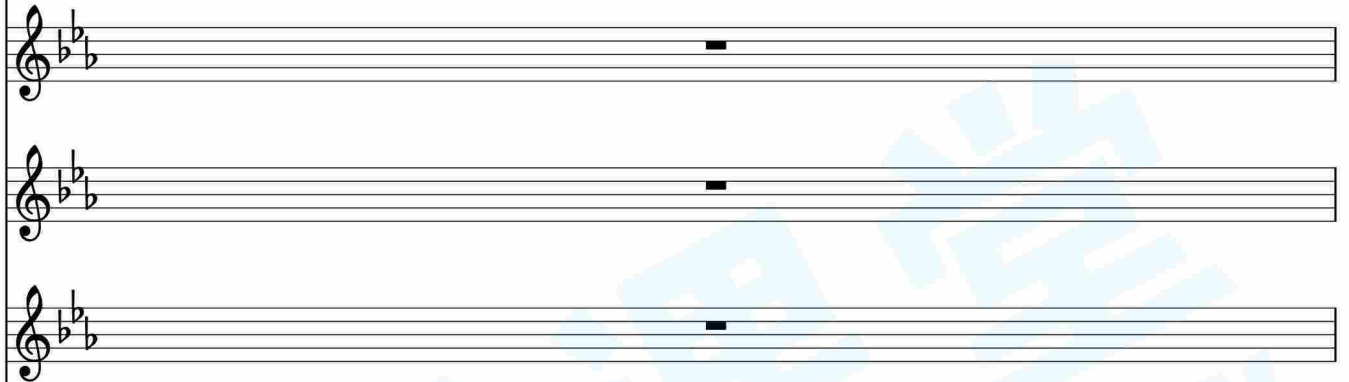
lc.



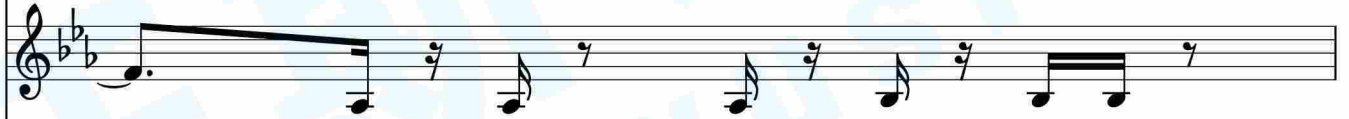
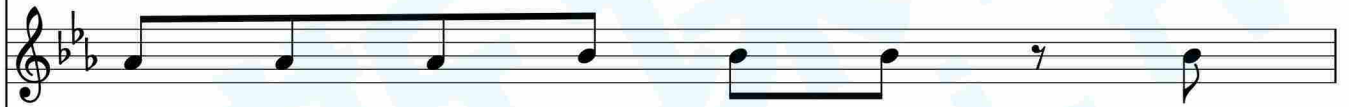
Pno.



Org.



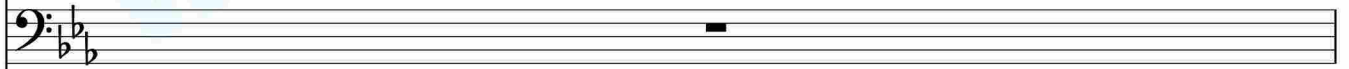
Gtr.



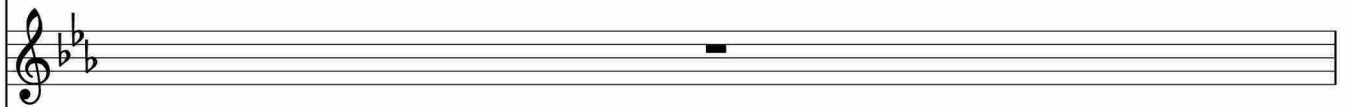
AP.



AB.



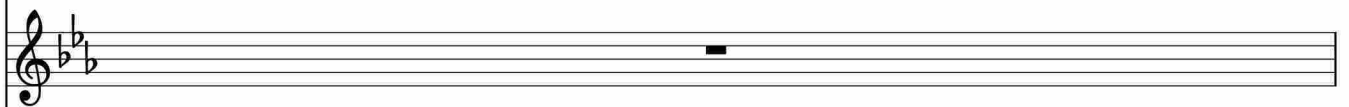
Hp.



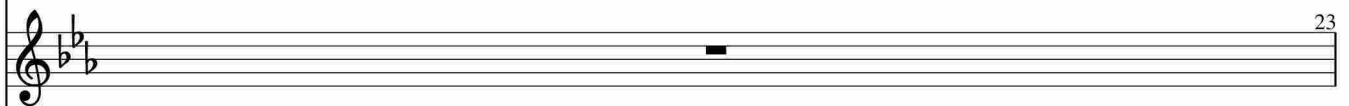
StrI.



StrII.

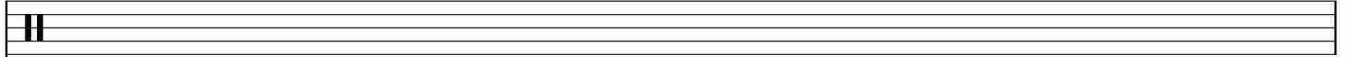


SB.

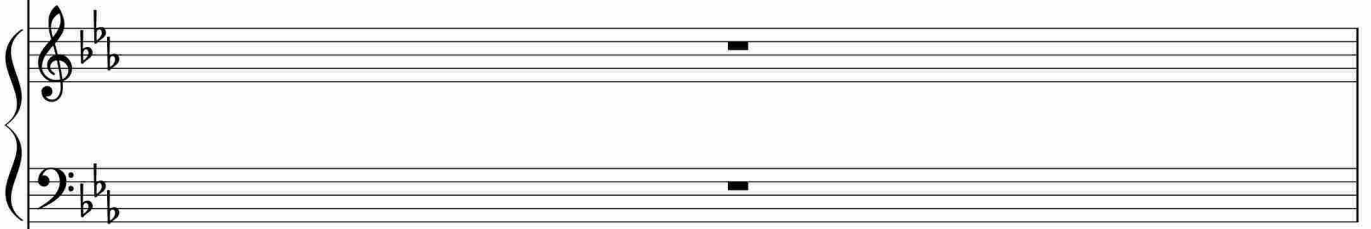




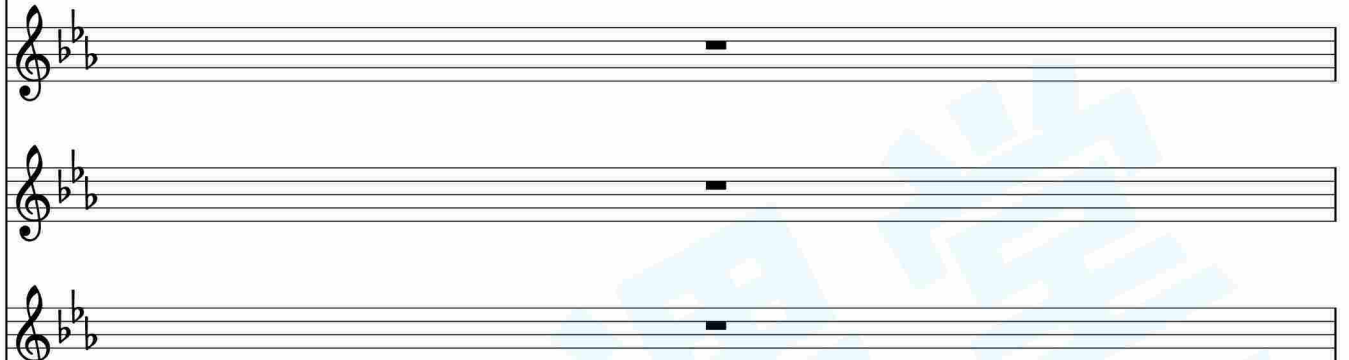
Ic.



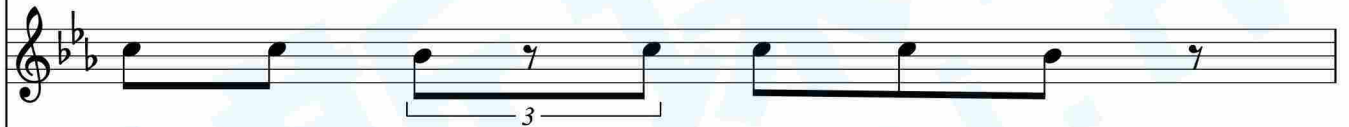
Pno.



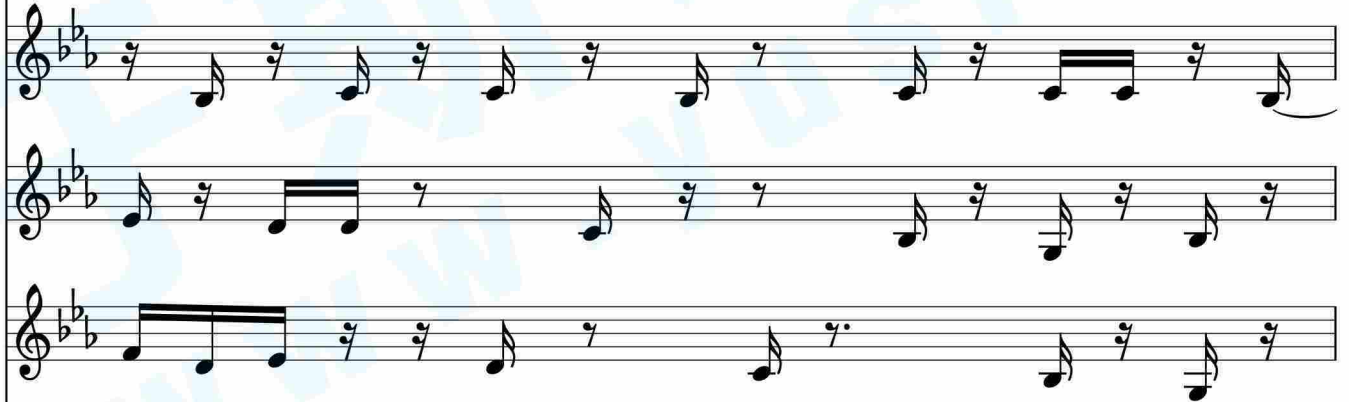
Org.



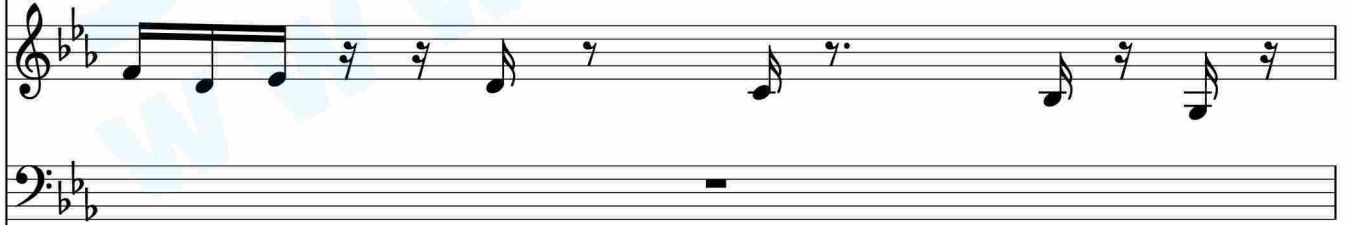
Gtr.



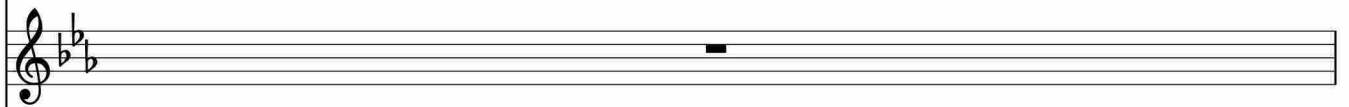
AP.



AB.



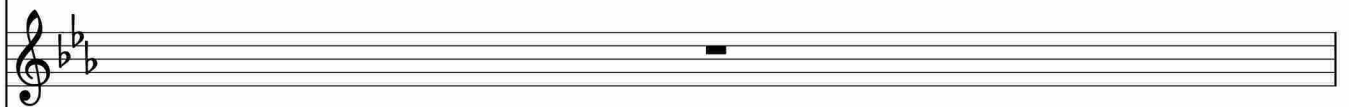
Hp.



StrI.

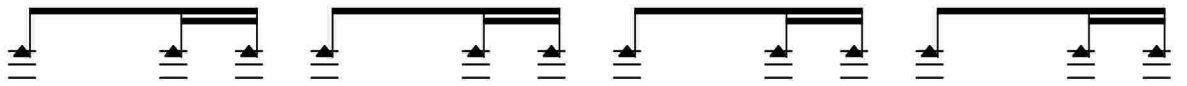


StrII.

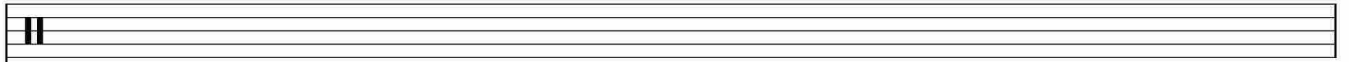


SB.

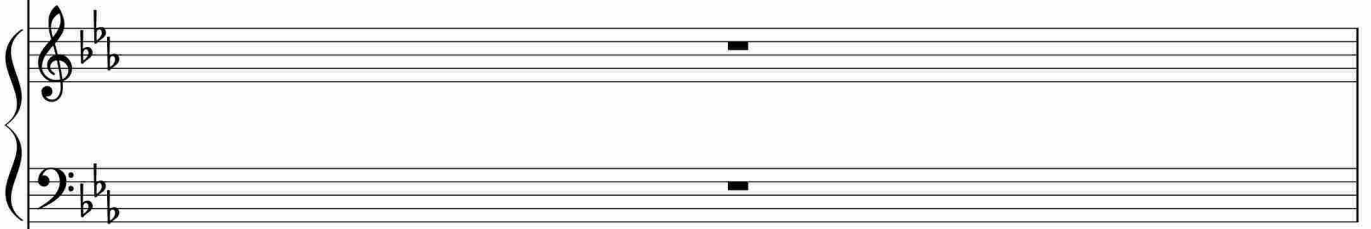




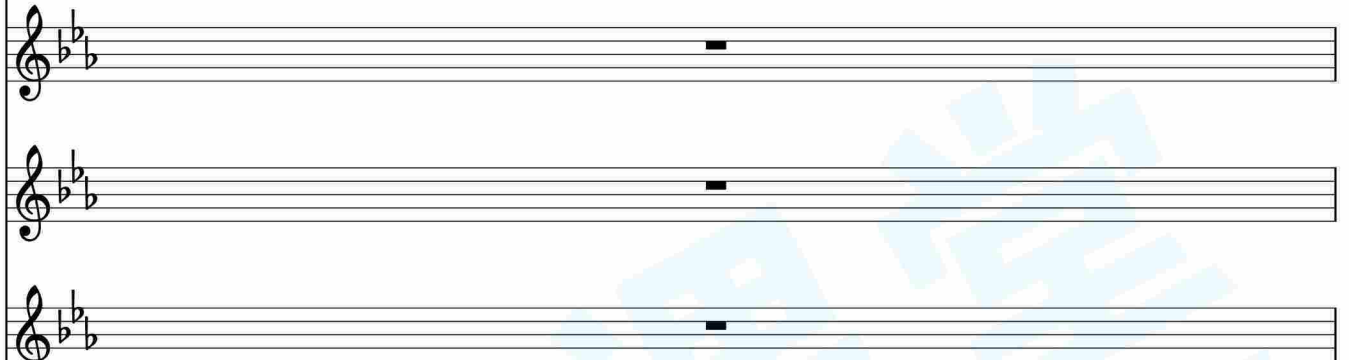
lc.



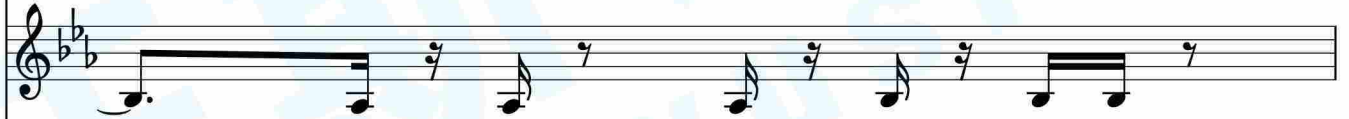
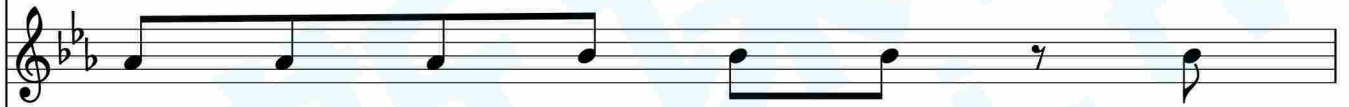
Pno.



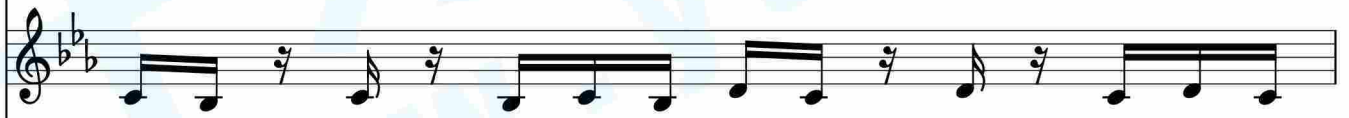
Org.



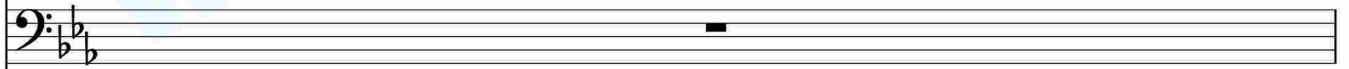
Gtr.



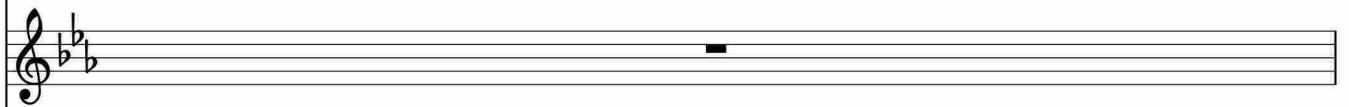
AP.



AB.



Hp.



StrI.



StrII.



SB.





Ic.

Empty musical staff with a double bar line at the beginning.

Pno.

Piano part with treble and bass staves, both containing a whole rest.

Org.

Organ part with a single treble staff containing a whole rest.

Gtr.

Guitar part with a treble staff containing a rhythmic pattern: quarter, quarter, eighth triplet, quarter, quarter, quarter, eighth.

AP.

AP part with a treble staff containing a rhythmic pattern of eighth notes with stems pointing up.

AP part with a treble staff containing a rhythmic pattern of eighth notes with stems pointing up.

AB.

AB part with a bass staff containing a rhythmic pattern of eighth notes with stems pointing up.

Hp.

Hammer part with a treble staff containing a whole rest.

StrI.

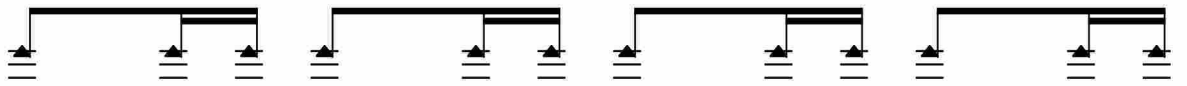
String I part with a treble staff containing a whole rest.

StrII.

String II part with a treble staff containing a whole rest.

SB.

SB part with a treble staff containing a whole rest.



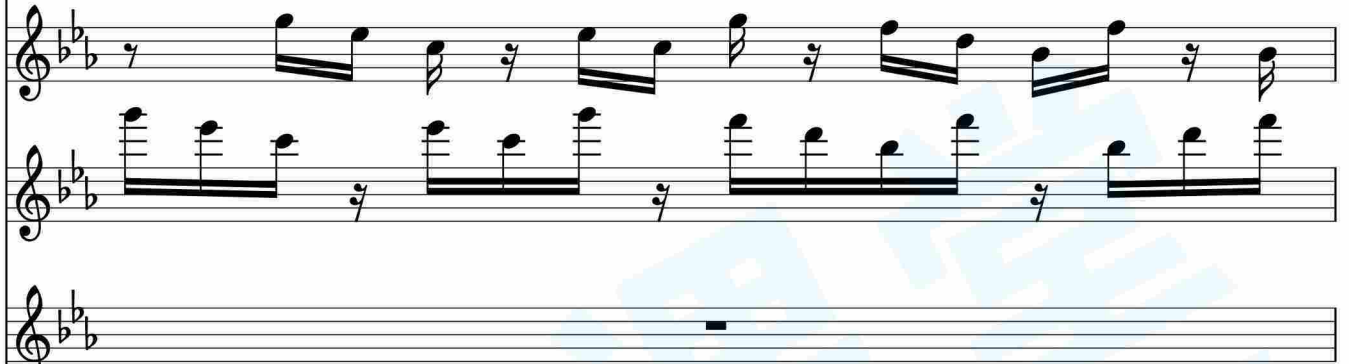
Ic.



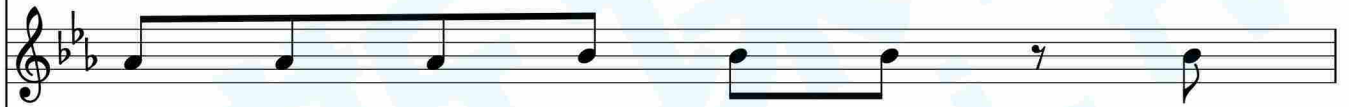
Pno.



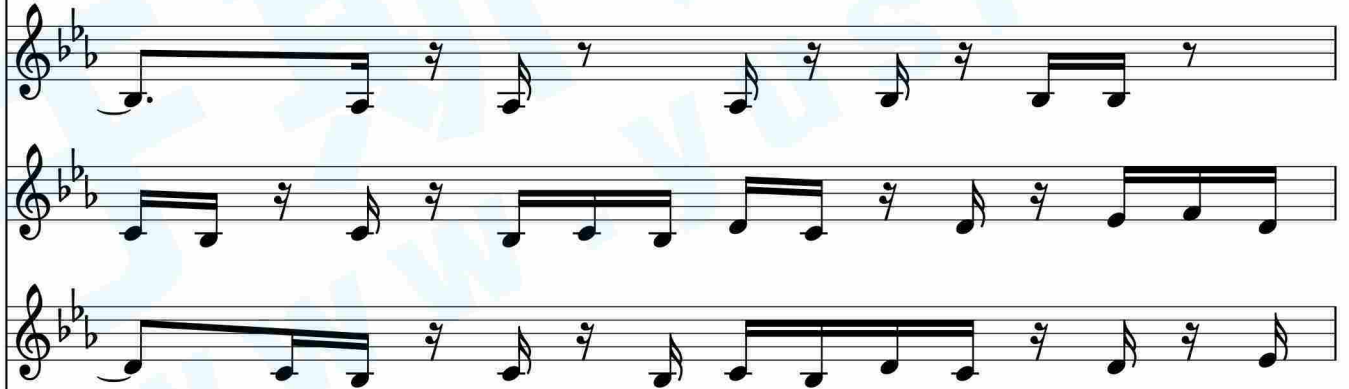
Org.



Gtr.



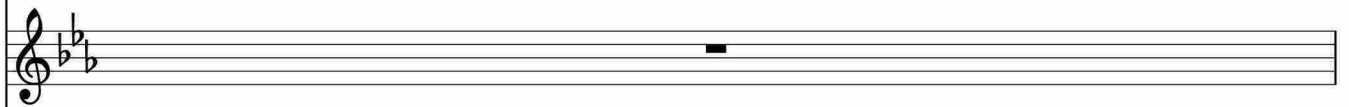
AP.



AB.



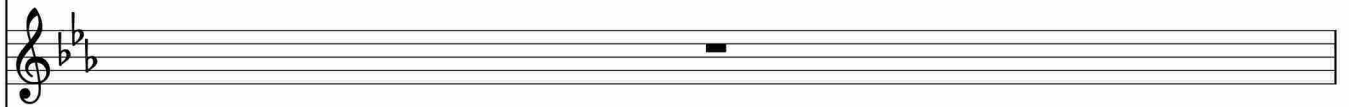
Hp.



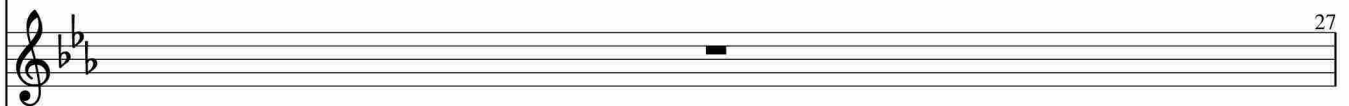
StrI.



StrII.

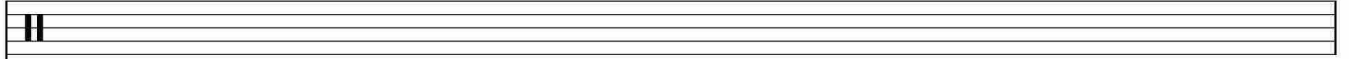


SB.

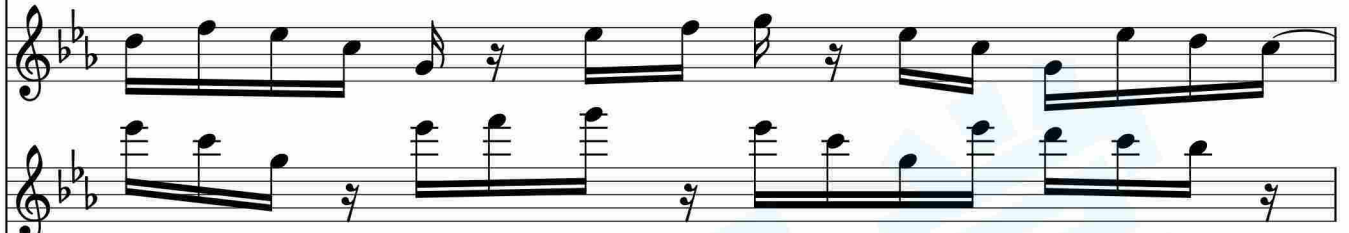
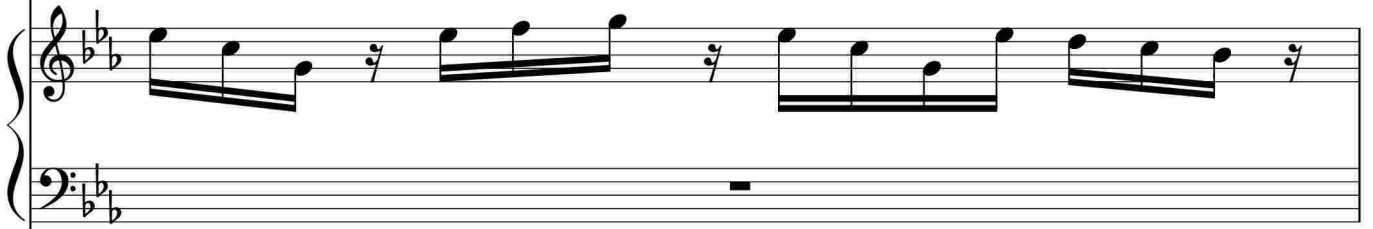




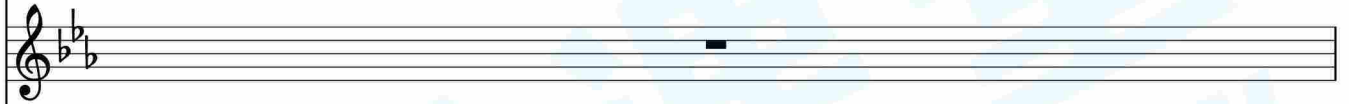
Ic.



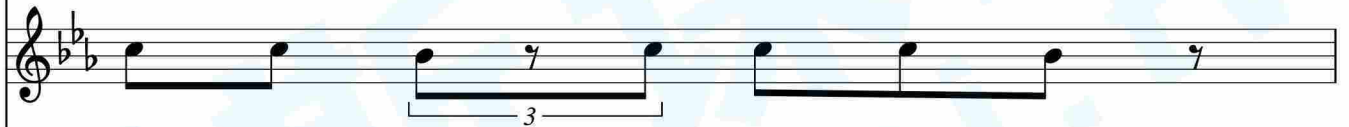
Pno.



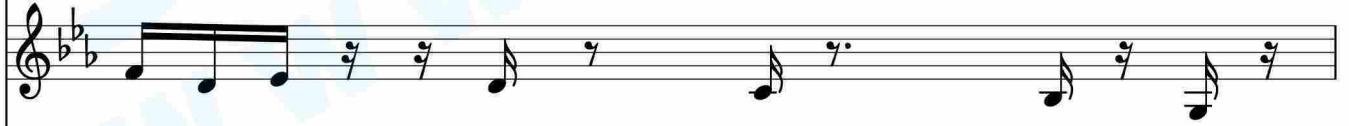
Org.



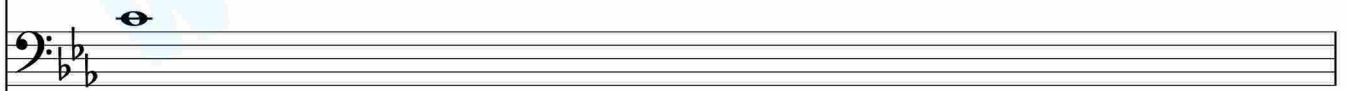
Gtr.



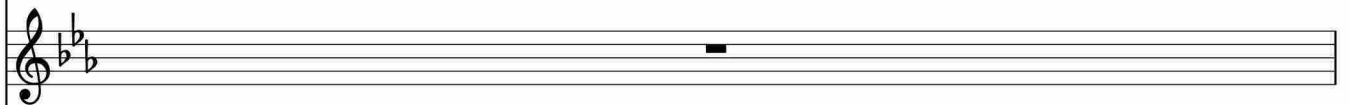
AP.



AB.



Hp.



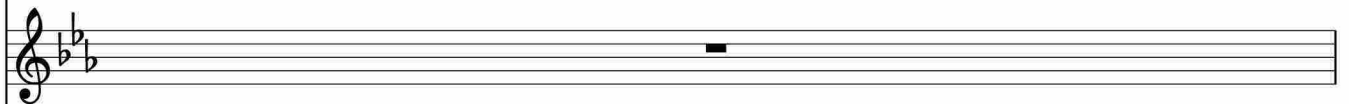
StrI.

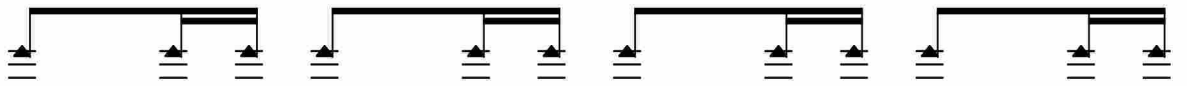


StrII.

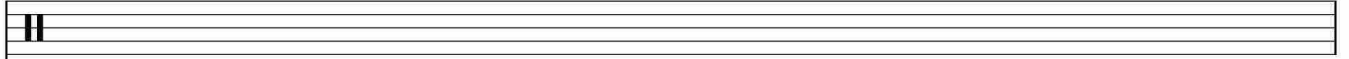


SB.





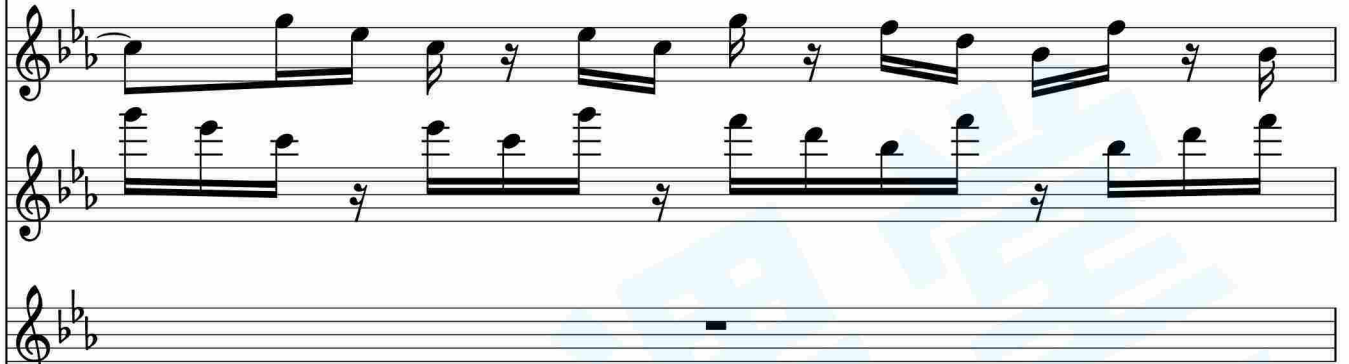
lc.



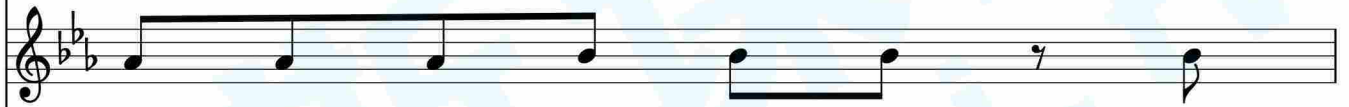
Pno.



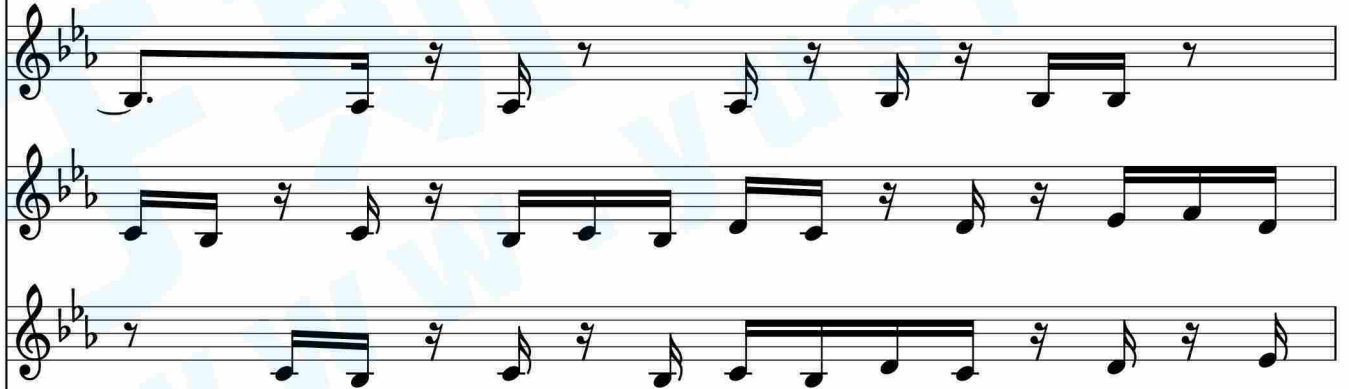
Org.



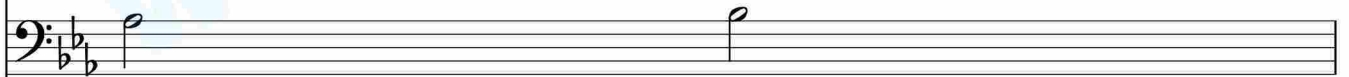
Gtr.



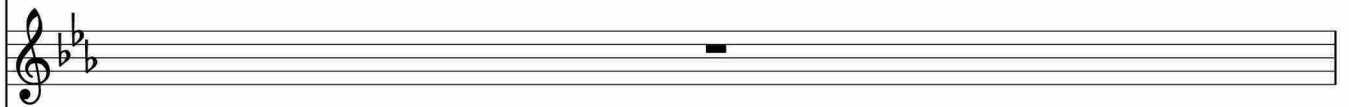
AP.



AB.



Hp.



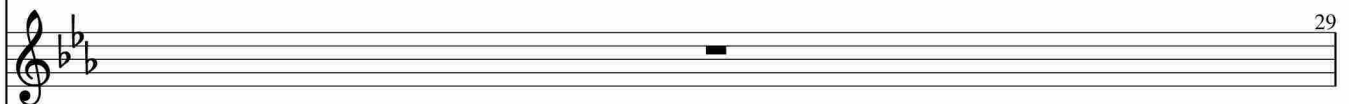
StrI.

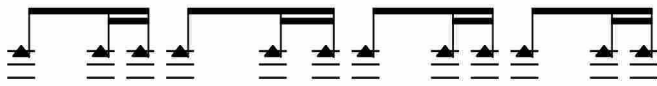


StrII.



SB.





lc.

Empty musical staff for the conductor.

Pno.

Piano part with treble and bass staves. Treble clef has a melodic line with eighth notes and rests. Bass clef has a bass line with eighth notes and rests.

Org.

Organ part with treble clef. It contains a melodic line with eighth notes and rests.

Gtr.

Guitar part with treble clef. It features a melodic line with eighth notes and a triplet of eighth notes.

AP.

AP part with treble clef. It contains a melodic line with eighth notes and rests.

AP part with treble clef. It contains a melodic line with eighth notes and rests.

AB.

AB part with bass clef. It contains a melodic line with eighth notes and rests.

Hp.

Harpsichord part with treble clef. It contains a melodic line with quarter notes and rests.

StrI.

String I part with treble clef. It contains a melodic line with quarter notes and rests.

StrII.

String II part with treble clef. It contains a melodic line with quarter notes and rests.

SB.

SB part with treble clef. It contains a melodic line with quarter notes and rests.

lc.

Pno.

Org.

Gtr.

AP.

AB.

Hp.

StrI.

StrII.

SB.

The musical score for page 34 is written for a large ensemble. The key signature consists of three flats (B-flat, E-flat, A-flat), and the time signature is common time (C). The instruments and their parts are as follows:

- lc. (Lyrics):** Two staves with rests.
- Pno. (Piano):** Two staves (treble and bass clef) with active melodic and harmonic lines. The right hand features eighth-note patterns and chords, while the left hand provides a steady bass line.
- Org. (Organ):** One staff with rests.
- Gtr. (Guitar):** One staff with rests.
- AP. (Alto Saxophone):** One staff with rests.
- AB. (Alto Bassoon):** One staff with rests.
- Hp. (Harp):** One staff with a simple eighth-note accompaniment.
- StrI. (String I):** One staff with a whole note chord in the first measure and a half note in the second.
- StrII. (String II):** One staff with rests in the first measure and a half note in the second.
- SB. (String Bass):** One staff with rests.

lc.

Pno.

Org.

Gtr.

AP.

AB.

Hp.

StrI.

StrII.

32 SB.

lc.

Pno.

Org.

Gtr.

AP.

AB.

Hp.

StrI.

StrII.

SB.

The musical score for page 38 is arranged in a vertical stack of staves. At the top is a percussion staff labeled 'lc.' with a double bar line. Below it is a grand piano staff labeled 'Pno.' with treble and bass clefs. The next two staves are for organ, labeled 'Org.', with treble clefs. This is followed by three guitar staves labeled 'Gtr.', also with treble clefs. Then come three staves for auxiliary percussion labeled 'AP.', with treble clefs. Below these are two staves for auxiliary bass labeled 'AB.', with bass clefs. The next staff is for harp labeled 'Hp.', with a treble clef. This is followed by three string staves: 'StrI.' (treble clef), 'StrII.' (treble clef), and 'SB.' (bass clef). The piano part features a melodic line in the right hand and a bass line in the left hand. The harp part has a simple eighth-note accompaniment. The string parts are mostly silent, with some notes in the first and second staves. A large, faint watermark is visible across the center of the page.

lc.

Pno.

Org.

Gtr.

AP.

AB.

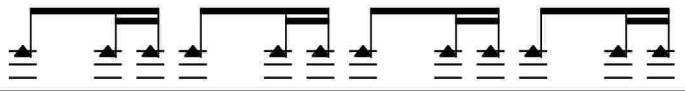
Hp.

StrI.

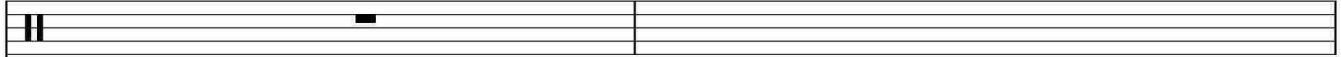
StrII.

34 SB.

The musical score for page 40 is arranged in a standard orchestral layout. It features the following parts from top to bottom: a conductor's part (lc.) with a double bar line; a piano (Pno.) part with a treble and bass clef, showing a melodic line in the right hand and a bass line in the left hand; an organ (Org.) part with a treble clef; a guitar (Gtr.) part with a treble clef; an acoustic piano (AP.) part with a treble clef; an acoustic bass (AB.) part with a bass clef; a harp (Hp.) part with a treble clef; a first string (StrI.) part with a treble clef; a second string (StrII.) part with a treble clef; and a section of 34 string basses (SB.) with a treble clef. The key signature is B-flat major (two flats), and the time signature is 4/4. A large, semi-transparent watermark for 'www.52jazz.com' is overlaid diagonally across the center of the page.



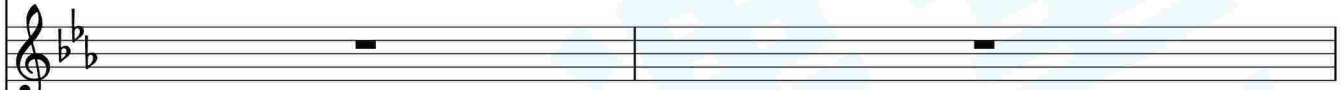
lc.



Pno.



Org.



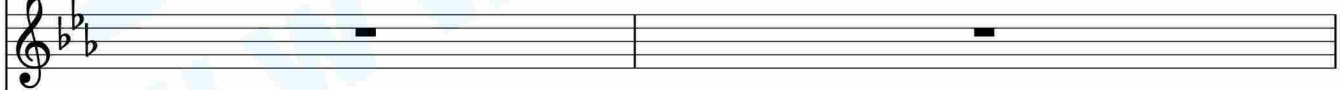
Gtr.



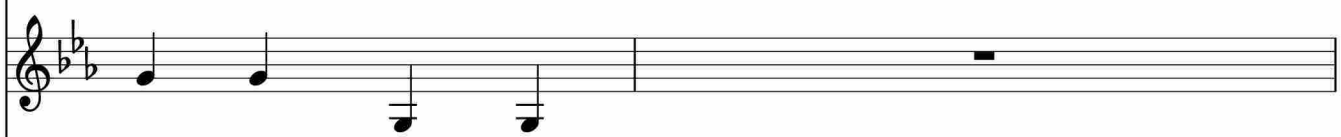
AP.



AB.



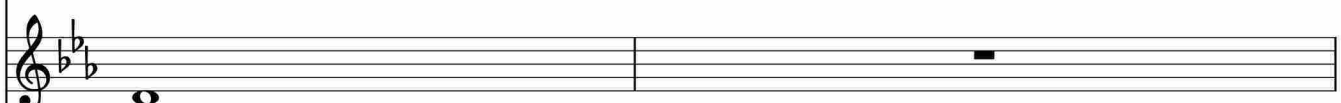
Hp.



StrI.



StrII.

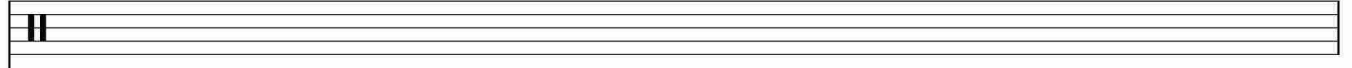


SB.





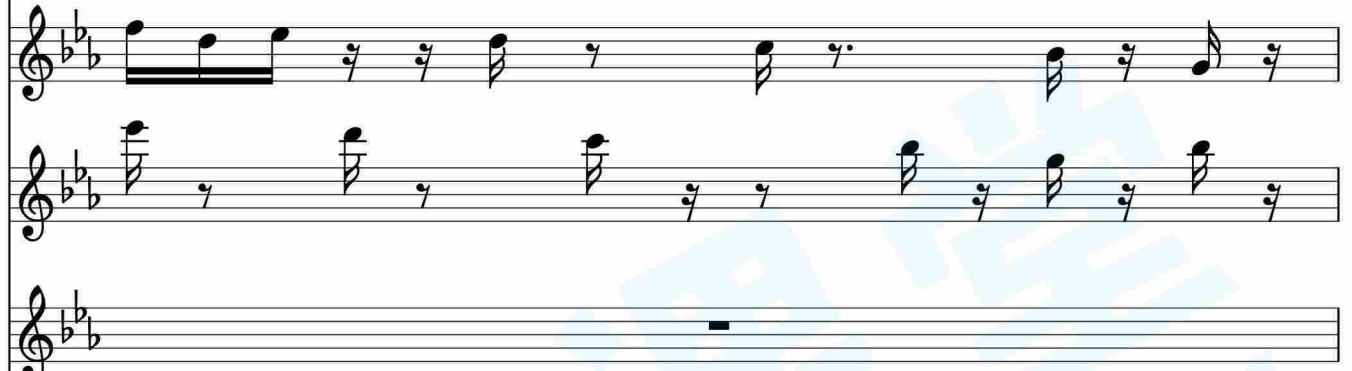
lc.



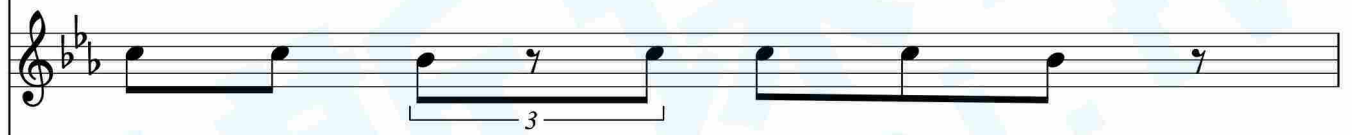
Pno.



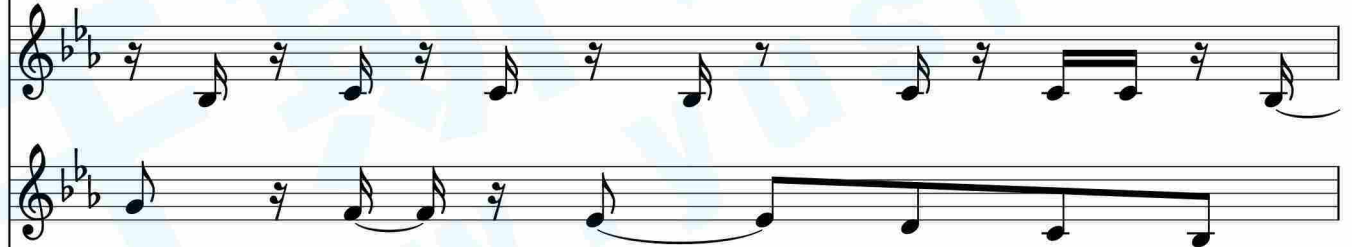
Org.



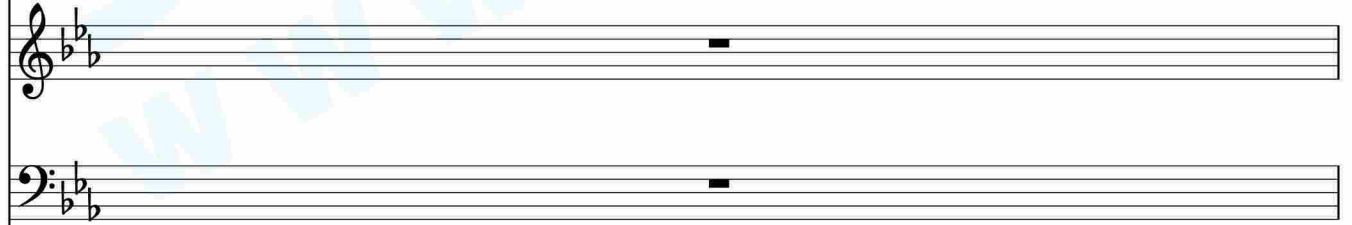
Gtr.



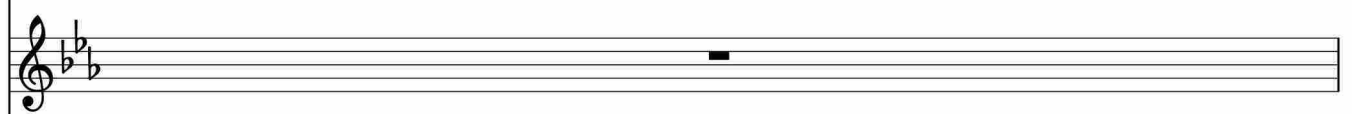
AP.



AB.



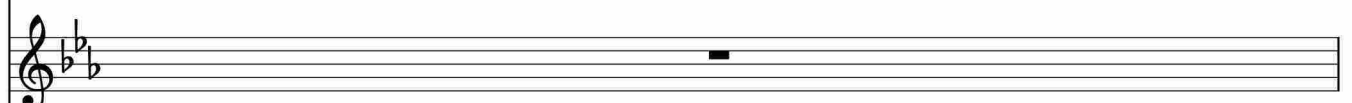
Hp.



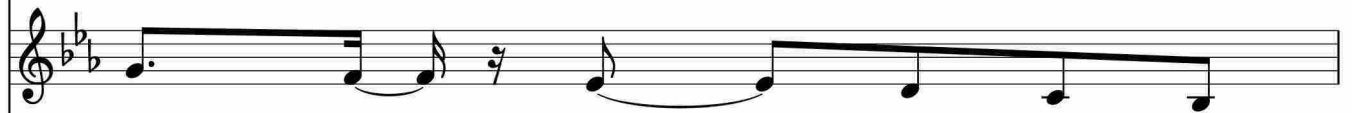
StrI.

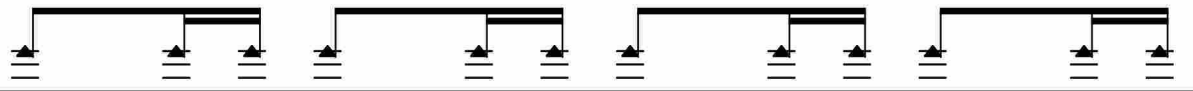


StrII.

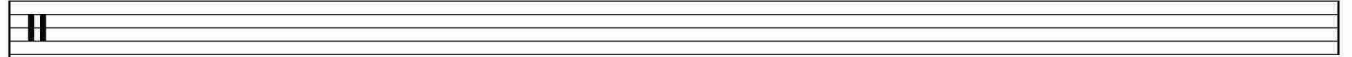


SB.

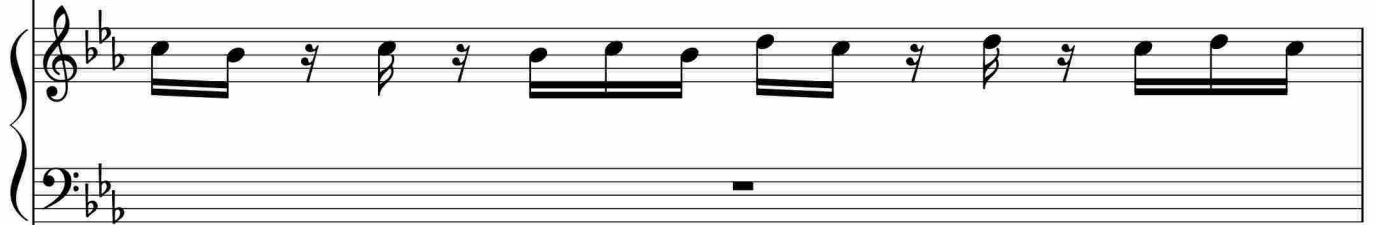




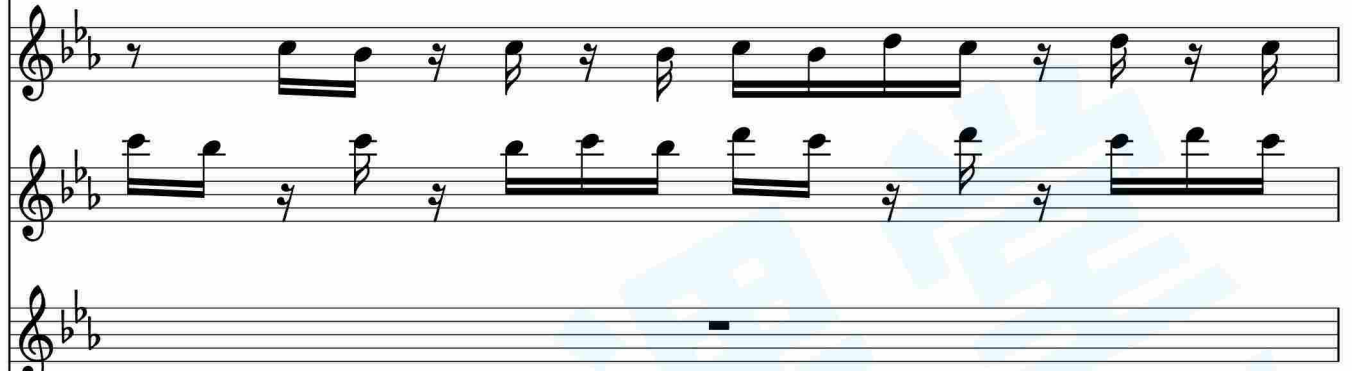
Ic.



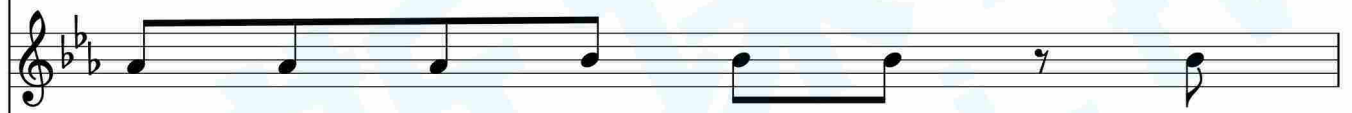
Pno.



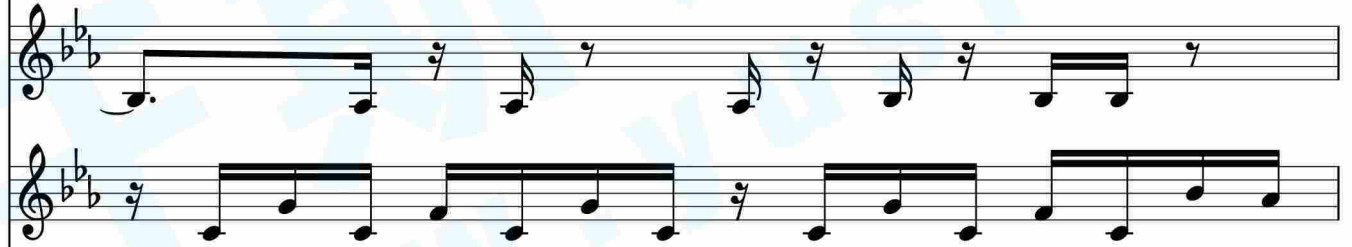
Org.



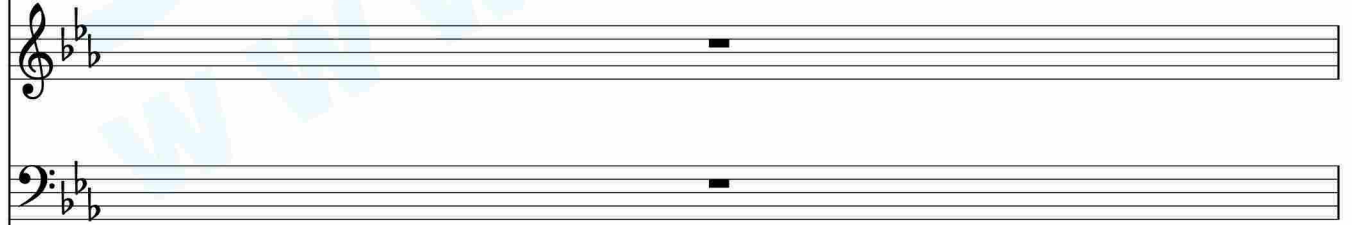
Gtr.



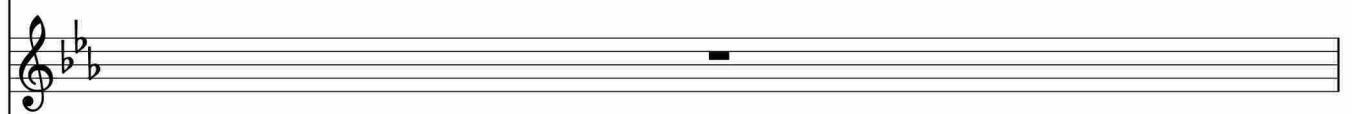
AP.



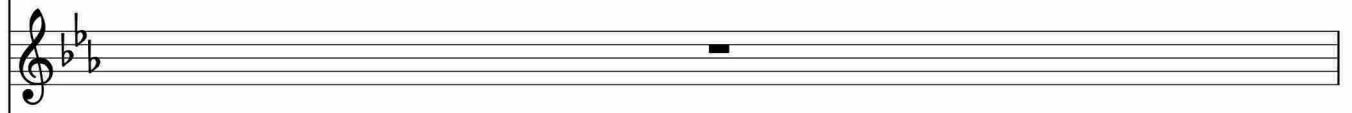
AB.



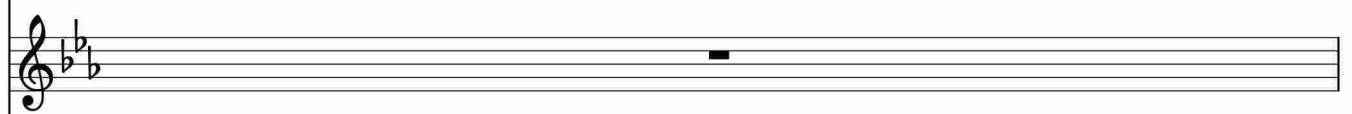
Hp.



StrI.



StrII.

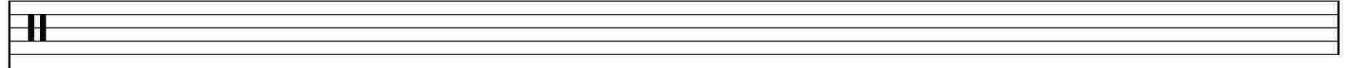


SB.

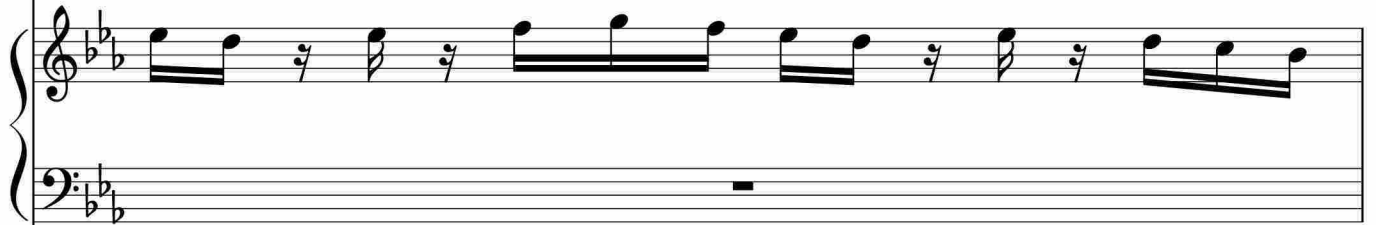




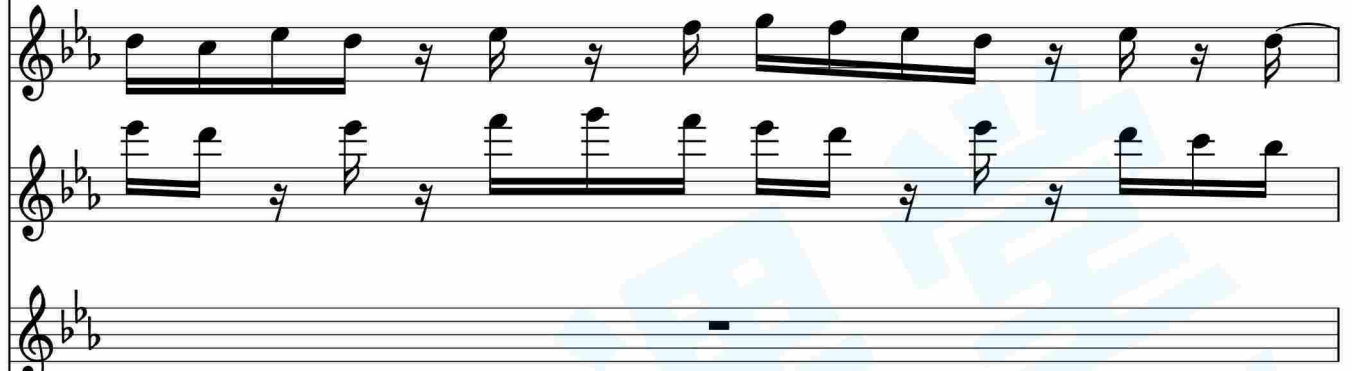
Ic.



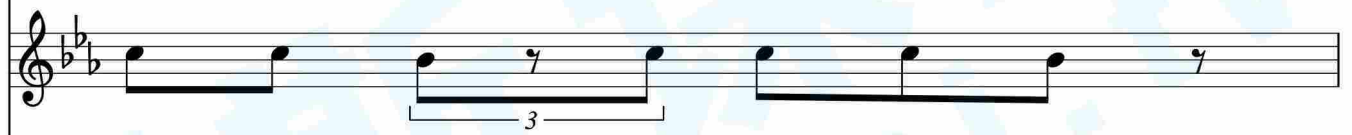
Pno.



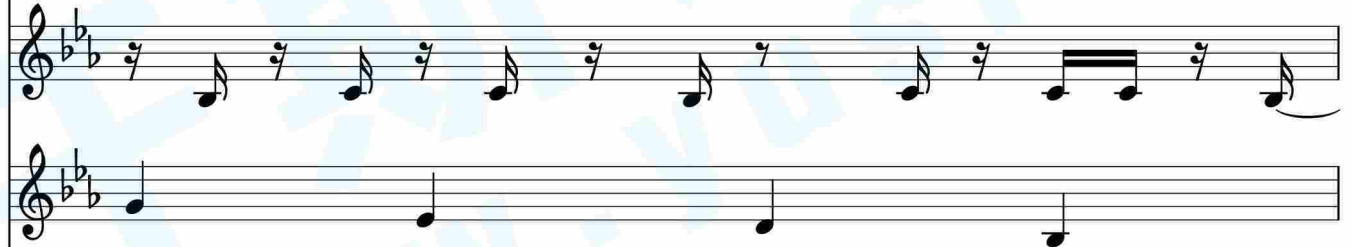
Org.



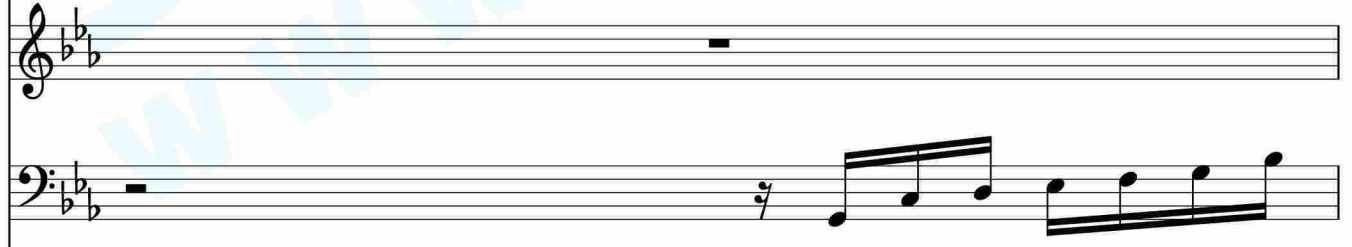
Gtr.



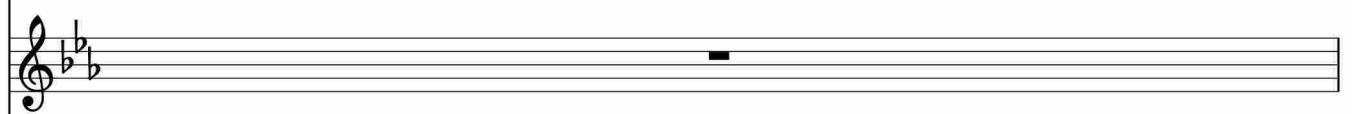
AP.



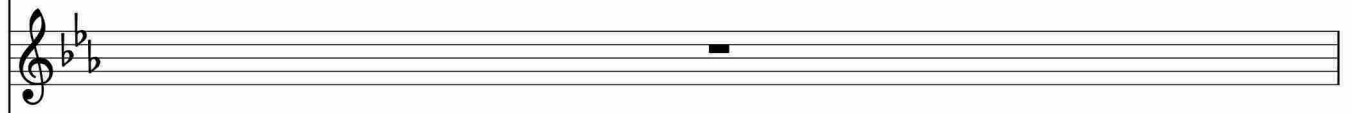
AB.



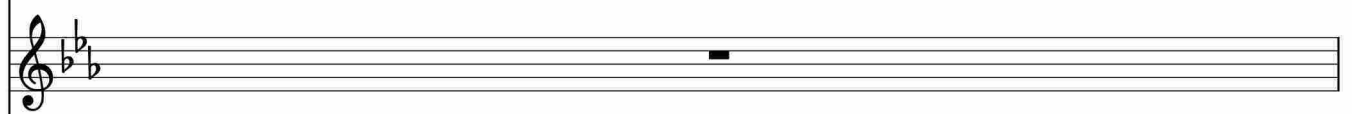
Hp.



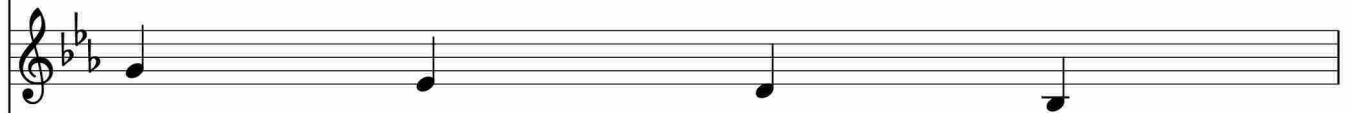
StrI.

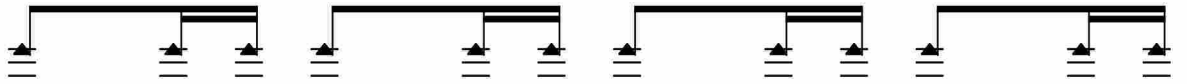


StrII.

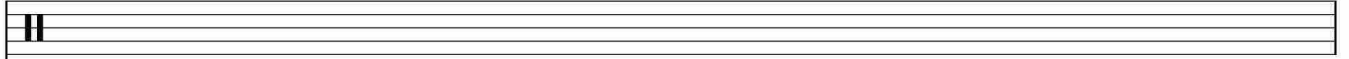


SB.

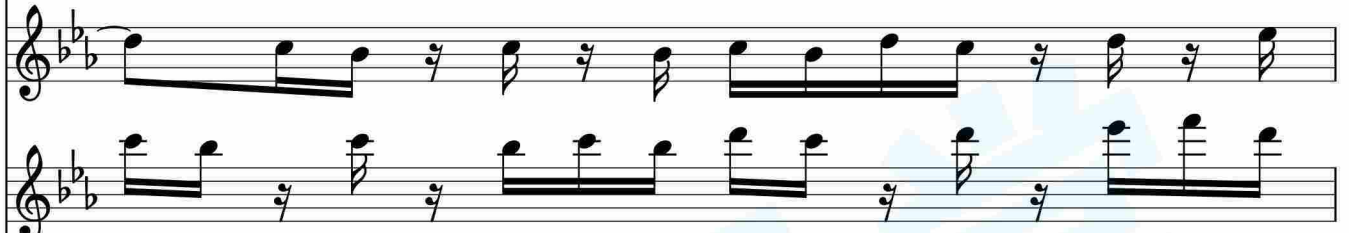




lc.



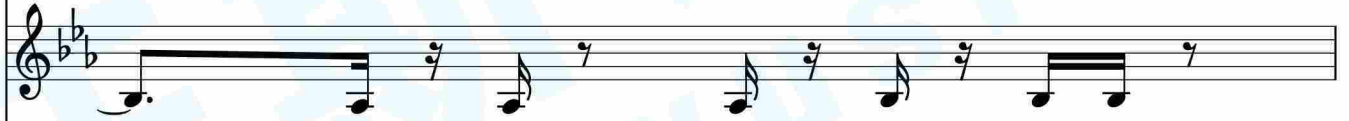
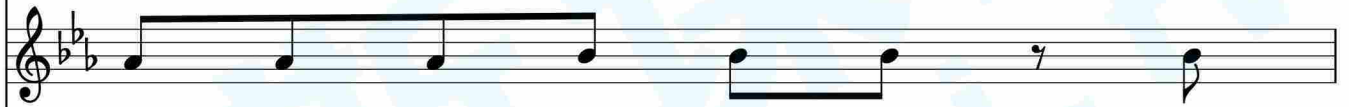
Pno.



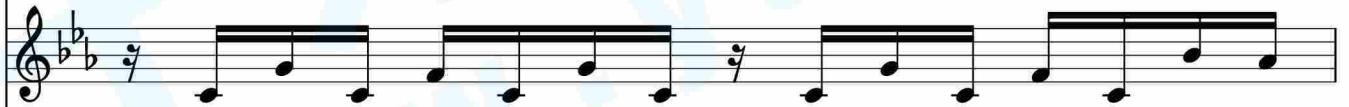
Org.



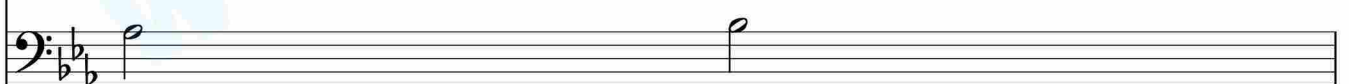
Gtr.



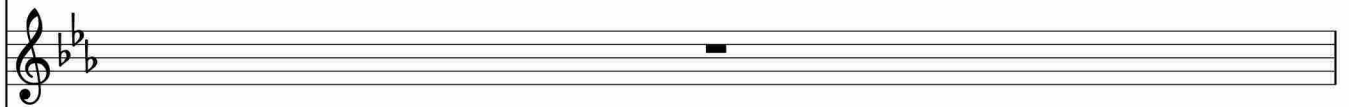
AP.



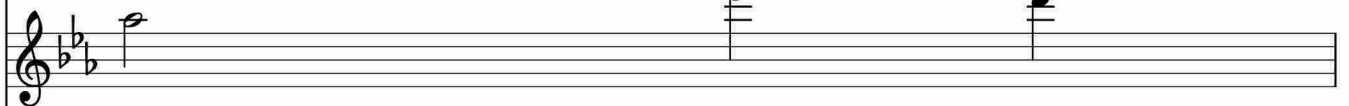
AB.



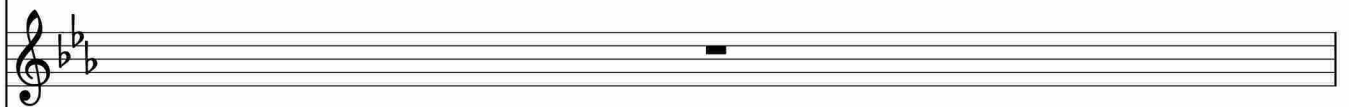
Hp.



StrI.



StrII.

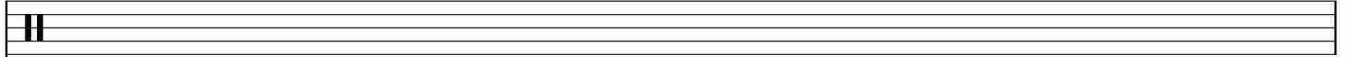


SB.





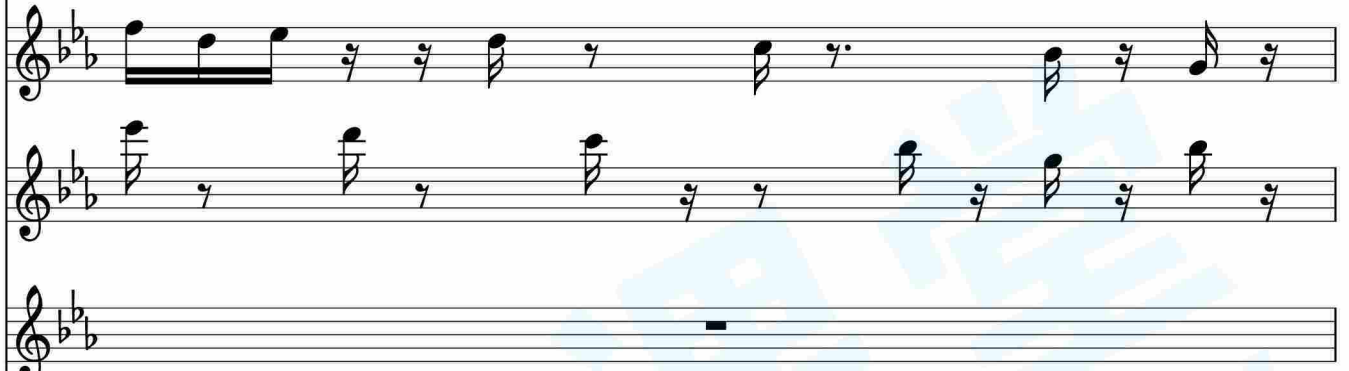
Ic.



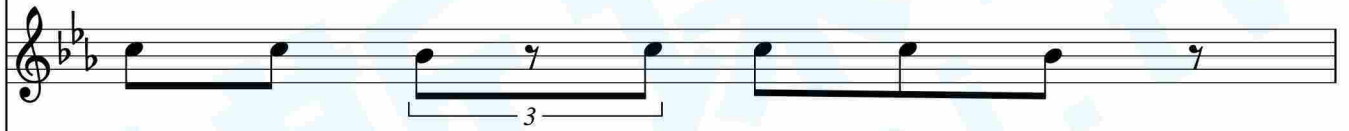
Pno.



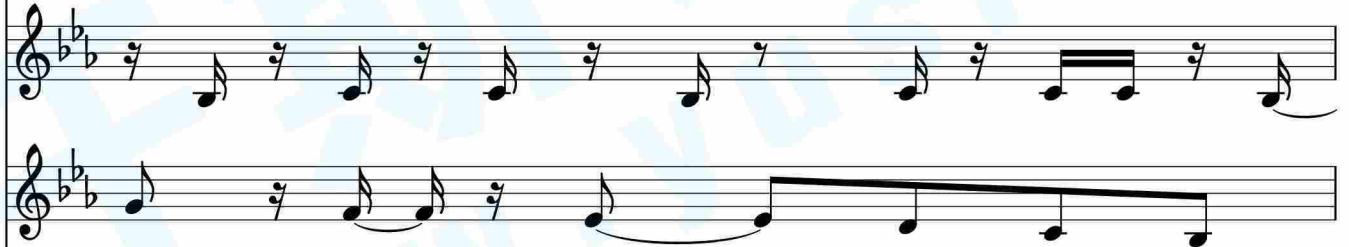
Org.



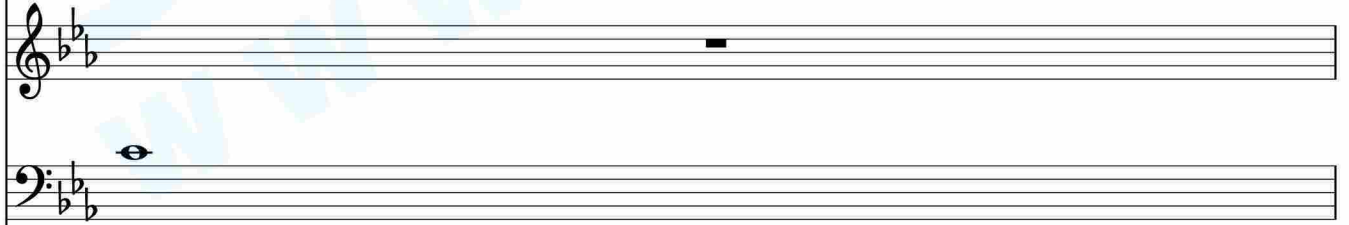
Gtr.



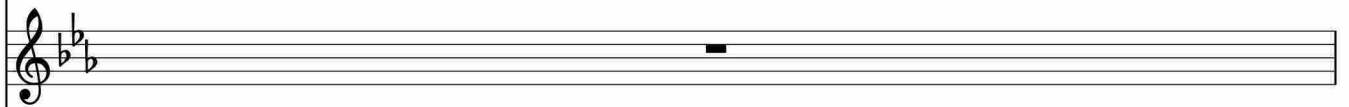
AP.



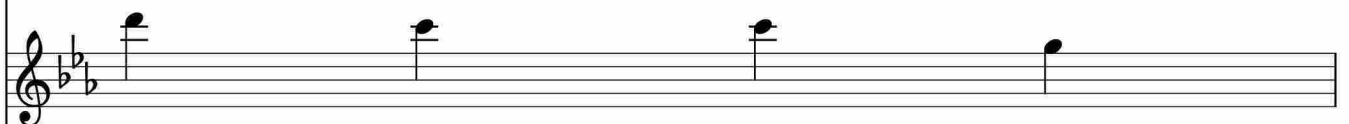
AB.



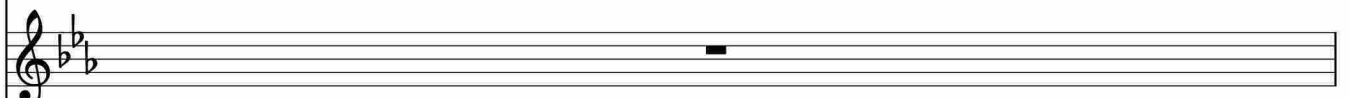
Hp.



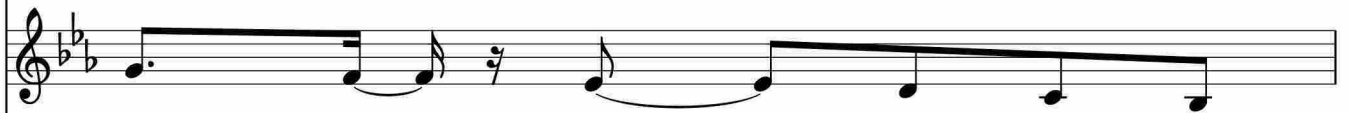
StrI.

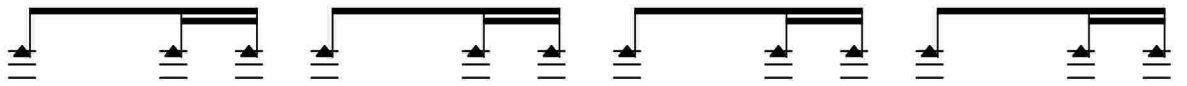


StrII.

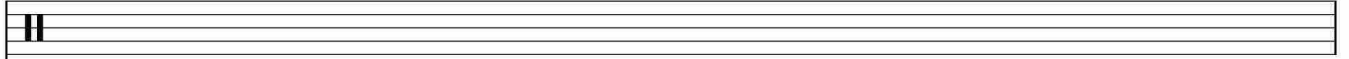


40 SB.

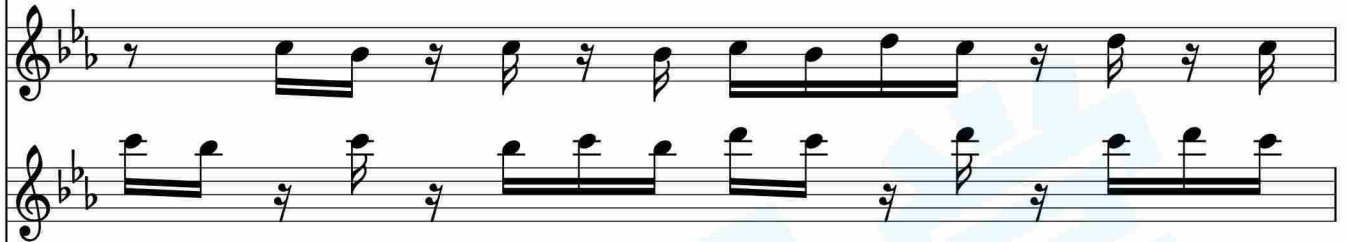




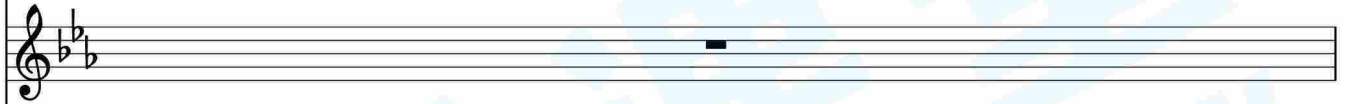
Ic.



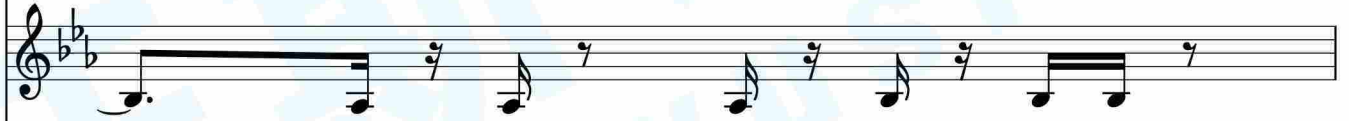
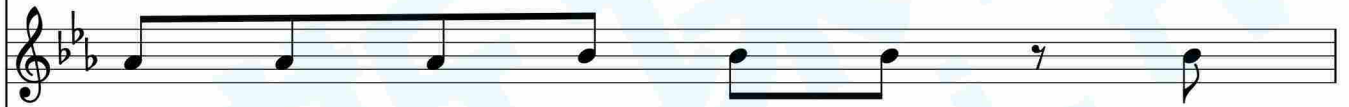
Pno.



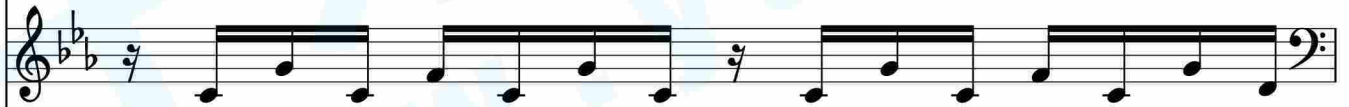
Org.



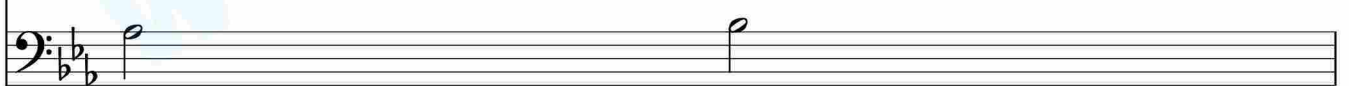
Gtr.



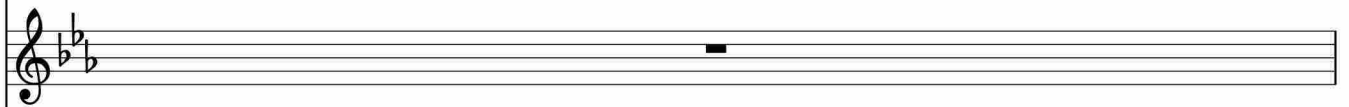
AP.



AB.



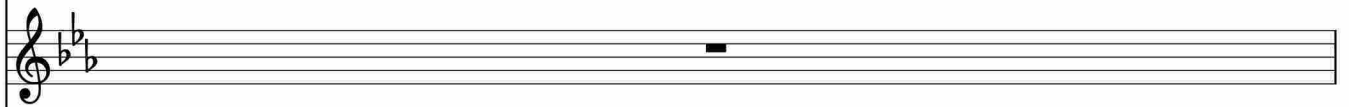
Hp.



StrI.

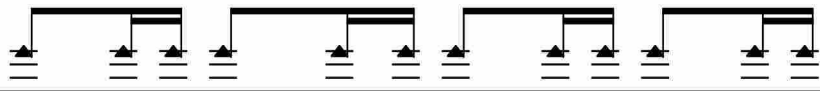


StrII.



SB.





lc.

Musical staff for woodwind instrument (lc.) with a whole rest.

Pno.

Piano accompaniment (Pno.) with treble and bass staves. Treble staff has eighth notes, bass staff has a whole rest.

Org.

Organ (Org.) with treble staff. Treble staff has eighth notes, bass staff has a whole rest.

Gtr.

Guitar (Gtr.) with treble staff. Treble staff has eighth notes and a triplet of eighth notes, bass staff has a whole rest.

AP.

Acoustic Piano (AP.) with treble and bass staves. Treble staff has eighth notes, bass staff has eighth notes.

AB.

Acoustic Bass (AB.) with bass staff. Bass staff has a whole rest.

Hp.

Hammered Dulcimer (Hp.) with treble staff. Treble staff has a whole rest.

StrI.

String I (StrI.) with treble staff. Treble staff has a whole rest.

StrII.

String II (StrII.) with treble staff. Treble staff has a whole rest.

SB.

Sub Bass (SB.) with treble staff. Treble staff has a whole rest.