

悲叹小夜曲

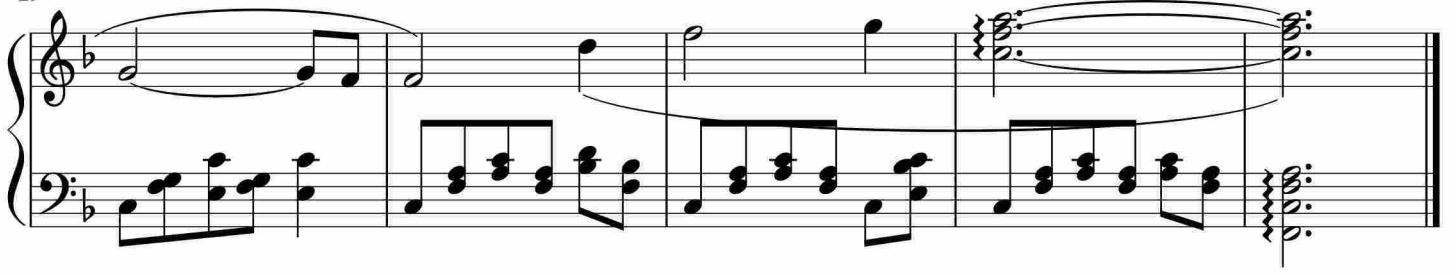
Measures 1-6 of the piece. The music is in 3/4 time with a key signature of one flat (B-flat). The right hand features a rhythmic pattern of eighth notes and quarter notes, while the left hand provides a steady accompaniment of quarter notes.

Measures 7-12. The right hand continues with a melodic line, incorporating some slurs and ties. The left hand maintains the accompaniment pattern.

Measures 13-17. The right hand features a more active melodic line with slurs. The left hand accompaniment remains consistent.

Measures 18-23. The right hand continues with a melodic line, including a long slur. The left hand accompaniment is steady.

Measures 24-29. The right hand features a melodic line with triplets in measures 24, 25, and 26. The left hand accompaniment continues.



于斯课堂
www.yusi.tv