

咏叹调

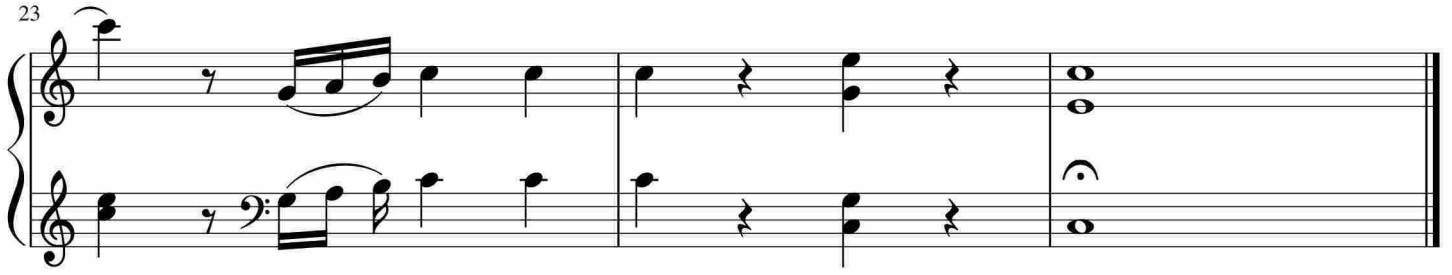
Measures 1-4 of the piano score. The piece is in 4/4 time. The right hand features a melodic line with eighth and sixteenth notes, while the left hand provides a steady accompaniment of eighth notes. A dynamic marking of *f* (forte) is present at the beginning.

Measures 5-8 of the piano score. The right hand continues with a melodic line, incorporating some grace notes. The left hand accompaniment remains consistent. Dynamic markings include *f* (forte) at the start of measure 5, *p* (piano) in measure 7, and *f* (forte) at the end of measure 8.

Measures 9-14 of the piano score. Measures 9-11 show a continuation of the melodic and accompanimental patterns. At measure 12, there is a double bar line and a key signature change to one sharp (F#). The right hand has a more active melodic line, and the left hand accompaniment changes to chords and eighth notes.

Measures 15-18 of the piano score. The right hand features a complex melodic line with many sixteenth notes. The left hand accompaniment consists of chords and eighth notes. The piece concludes with a double bar line at the end of measure 18.

Measures 19-24 of the piano score. The right hand continues with a melodic line, and the left hand accompaniment remains active. The piece ends with a double bar line at the end of measure 24.



于斯课堂
www.yusi.tv