

# 逍遥叹 (简易版)

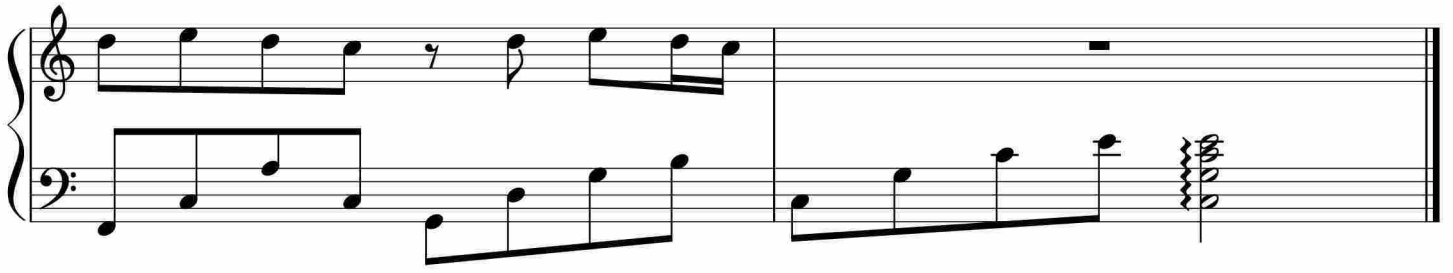
Measures 1-5 of the score. The piece is in 4/4 time. The right hand features a melodic line with eighth-note patterns and rests, while the left hand provides a steady accompaniment of eighth notes.

Measures 6-10 of the score. The right hand continues with eighth-note runs and rests, and the left hand maintains the accompaniment pattern.

Measures 11-15 of the score. The right hand has a melodic line with eighth notes and rests, and the left hand continues with the accompaniment.

Measures 16-20 of the score. The right hand includes a measure with a fermata over a half note. The left hand continues with the accompaniment.

Measures 21-25 of the score. The right hand features a melodic line with eighth notes and rests, and the left hand continues with the accompaniment.



于斯课堂  
www.yusi.tv