

# Meng-Jiang Nu

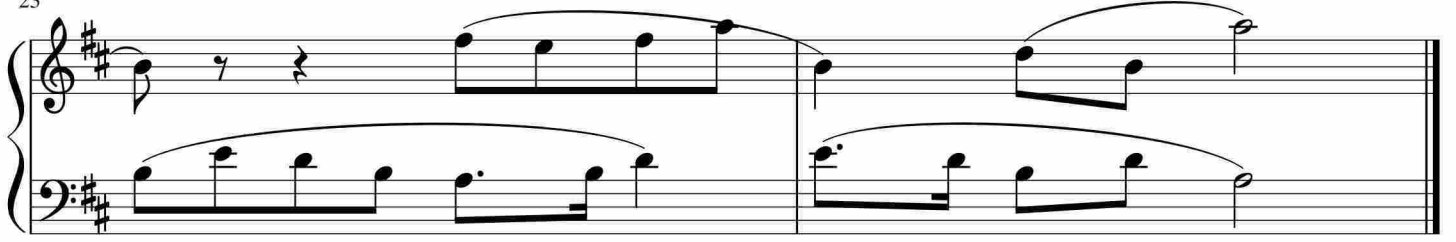
Measures 1-5 of the piece. The music is in 4/4 time with a key signature of one sharp (F#). The melody in the treble clef consists of eighth and quarter notes, often beamed together. The bass clef accompaniment features a steady eighth-note pattern.

Measures 6-10. The melody continues with similar rhythmic patterns. A large, faint watermark is visible in the background of this section.

Measures 11-14. At measure 13, the key signature changes to two sharps (F# and C#). The melody and accompaniment continue with the established patterns.

Measures 15-18. The key signature remains two sharps. The melody features some rests and eighth-note patterns.

Measures 19-22. The key signature remains two sharps. The piece concludes with a final melodic phrase in the treble clef and a corresponding accompaniment in the bass clef.



于斯课堂  
www.yusi.tv