

Rudolph the Red-Nosed Raindeer

The first system of the piano score for 'Rudolph the Red-Nosed Raindeer' is in 4/4 time. It begins with a series of chords in the right hand, followed by a melodic line. The left hand provides a simple bass line. A repeat sign is present at the end of the first two measures.

5

The second system continues the piece, starting at measure 5. The right hand features a more active melodic line with eighth notes, while the left hand maintains a steady bass line.

9

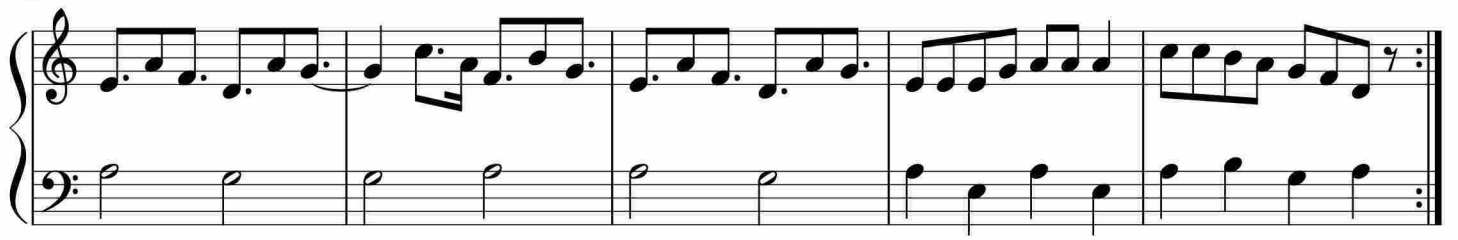
The third system begins at measure 9. The right hand continues with a melodic line, and the left hand provides a consistent bass accompaniment.

14

The fourth system starts at measure 14. The right hand has a melodic line with some eighth-note patterns, and the left hand continues with a simple bass line.

19

The fifth system begins at measure 19. The right hand features a melodic line with eighth notes, and the left hand provides a steady bass line.



于斯课堂
www.yusi.tv