

# 韩剧《玻璃鞋》插曲：tears

Measures 1-5 of the musical score. The piece is in 4/4 time. The right hand features a melodic line with eighth and sixteenth notes, while the left hand provides a steady accompaniment of quarter notes.

Measures 6-10 of the musical score. Measure 6 is marked with a '6'. The melody continues with some chromatic movement, including a sharp sign in measure 8. The accompaniment remains consistent with quarter notes.

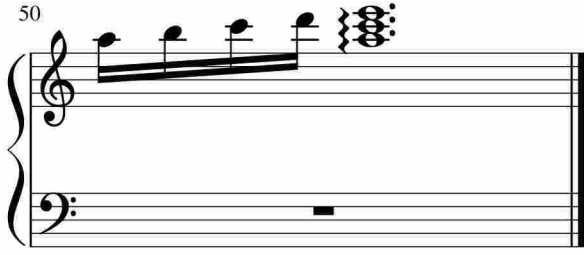
Measures 11-15 of the musical score. Measure 11 is marked with an '11'. The right hand has a more active melodic line with eighth notes. The left hand accompaniment includes some chords and moving lines.

Measures 16-19 of the musical score. Measure 16 is marked with a '16'. The right hand features a series of chords and moving lines. The left hand continues with a steady accompaniment.

Measures 20-23 of the musical score. Measure 20 is marked with a '20'. The piece concludes with a final melodic phrase in the right hand and a supporting accompaniment in the left hand.



50



于斯课堂  
www.yusi.tv