

# Sagittarius And Cancer

*Larghetto*

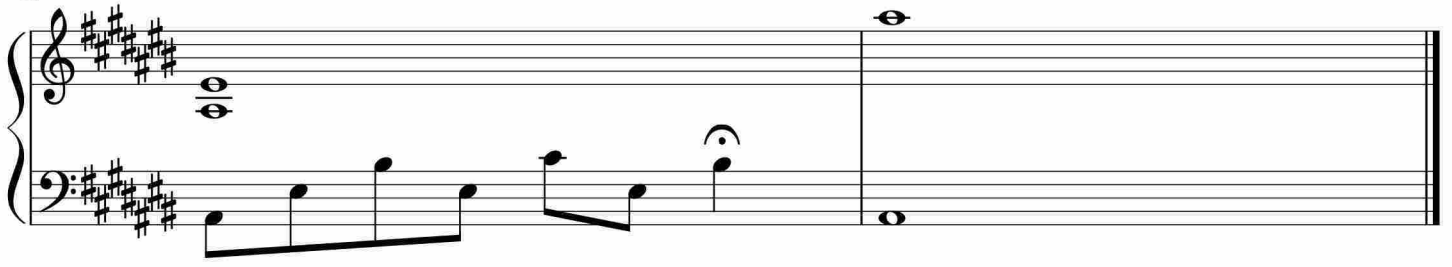
Measures 1-4 of the piece. The music is in 4/4 time with a key signature of three sharps (F#, C#, G#). The melody in the right hand features eighth-note patterns and quarter notes, while the left hand provides a steady accompaniment of quarter notes.

Measures 5-8. The right hand continues with eighth-note runs and quarter notes, including a half-note chord in measure 8. The left hand maintains the quarter-note accompaniment.

Measures 9-12. Measure 9 features a melodic flourish in the right hand. Measures 10 and 11 contain long, sustained chords in the right hand. The left hand continues with quarter notes.

Measures 13-16. The right hand has a melodic line with eighth notes and quarter notes. The left hand continues with quarter notes, including a triplet in measure 14.

Measures 17-20. The right hand features a melodic line with eighth notes and quarter notes. The left hand continues with quarter notes, including a triplet in measure 18. The piece concludes with a final chord in measure 20.



于斯课堂  
www.yusi.tv