

快乐的旋律

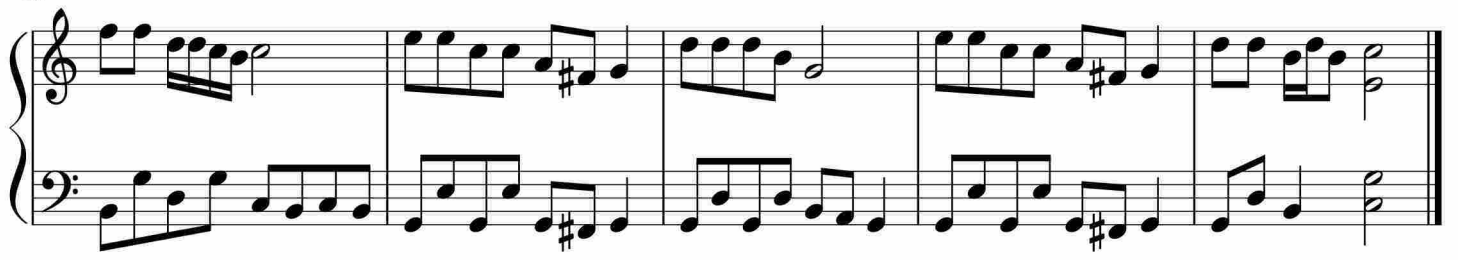
Measures 1-5 of the piece. The music is in 4/4 time. The right hand features a melody of eighth and quarter notes, while the left hand provides a steady eighth-note accompaniment. A repeat sign is present at the end of measure 5.

Measures 6-10. Measure 6 begins with a first ending bracket. The melody continues with eighth and quarter notes. The left hand accompaniment remains consistent. A repeat sign is at the end of measure 10.

Measures 11-15. Measure 11 starts with a second ending bracket. The melody includes a sharp sign (F#) in measure 13. The left hand accompaniment continues with eighth notes. A repeat sign is at the end of measure 15.

Measures 16-20. The melody in the right hand becomes more active with sixteenth-note runs. The left hand accompaniment continues with eighth notes. A repeat sign is at the end of measure 20.

Measures 21-25. The melody continues with eighth and quarter notes. The left hand accompaniment remains consistent. A repeat sign is at the end of measure 25.



于斯课堂
www.yusi.tv