

命运之夜

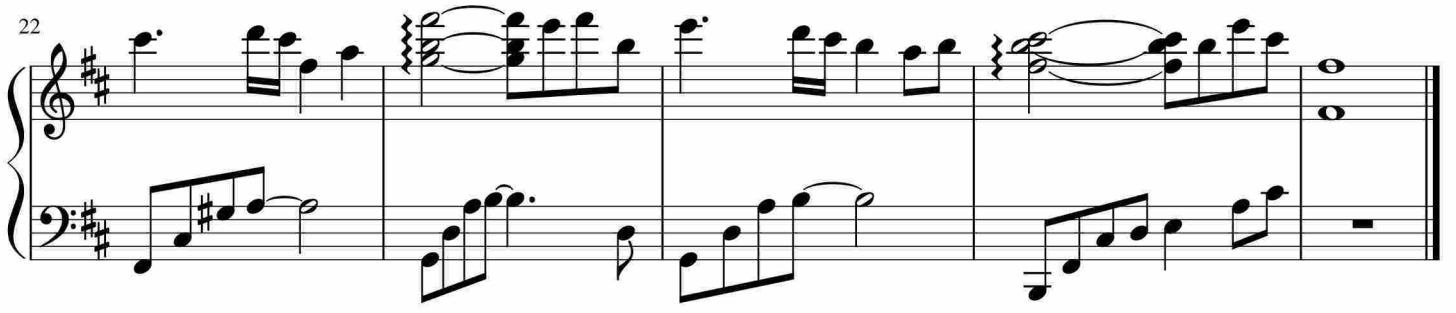
Measures 1-5 of the piece. The music is in G major (one sharp) and 4/4 time. The right hand features a complex, rhythmic accompaniment with many beamed eighth and sixteenth notes, while the left hand plays a steady eighth-note bass line.

Measures 6-9. The right hand continues with its intricate accompaniment, and the left hand maintains the eighth-note bass line. A large, faint watermark is visible in the background.

Measures 10-13. The right hand's accompaniment becomes more active with frequent sixteenth-note patterns. The left hand continues with the eighth-note bass line.

Measures 14-17. The right hand features a series of chords and moving lines. The left hand continues with the eighth-note bass line.

Measures 18-21. The right hand has some sustained chords and melodic fragments. The left hand continues with the eighth-note bass line, ending with a final note.



于斯课堂
www.yusi.tv