

边疆的泉水清又纯 (简单即兴伴奏)

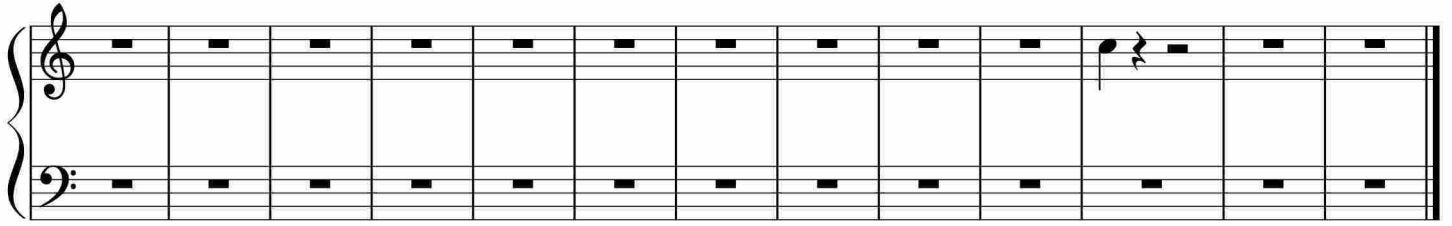
Measures 1-5 of the piano accompaniment for "边疆的泉水清又纯". The music is in 4/4 time. The right hand features a melody with eighth and quarter notes, while the left hand provides a steady bass line with eighth notes.

Measures 6-10 of the piano accompaniment. The right hand continues the melodic line with some rests, and the left hand maintains the rhythmic accompaniment.

Measures 11-15 of the piano accompaniment. The right hand has a more active melodic line with eighth notes, and the left hand continues the bass accompaniment.

Measures 16-21 of the piano accompaniment. The right hand features a melodic line with eighth notes and quarter notes, and the left hand continues the bass accompaniment.

Measures 22-27 of the piano accompaniment. The right hand has a melodic line with quarter notes and rests, and the left hand continues the bass accompaniment.



于斯课堂
www.yusi.tv