

can you feel the love tonight

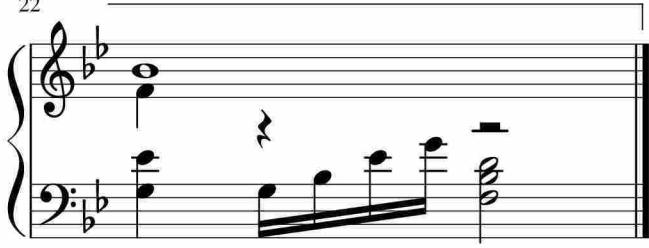
The first system of the piano score for 'Can You Feel the Love Tonight' is in 4/4 time with a key signature of two flats (B-flat and E-flat). It consists of two staves: a treble clef staff and a bass clef staff. The treble staff begins with a series of chords and eighth-note patterns, while the bass staff provides a steady accompaniment with chords and eighth notes.

The second system continues the piano accompaniment, starting at measure 6. It features a melodic line in the treble staff with eighth-note runs and a supporting bass line with chords and eighth notes. A fermata is placed over the eighth measure of the treble staff.

The third system, starting at measure 10, shows the piano accompaniment continuing. The treble staff has a melodic line with eighth notes and rests, while the bass staff has a consistent accompaniment of chords and eighth notes. The system ends with a double bar line and repeat signs.

The fourth system, starting at measure 14, continues the piano accompaniment. The treble staff features a melodic line with eighth-note patterns, and the bass staff provides a steady accompaniment with chords and eighth notes.

The fifth system, starting at measure 18, concludes the piano accompaniment. It includes a first ending (marked '1.') and a second ending (marked '2.'). The first ending leads back to an earlier part of the piece, while the second ending provides a final resolution. The system ends with a double bar line and repeat signs.



于斯课堂
www.yusi.tv