

闭上眼睛的瞬间

Measures 1-5 of the piano score. The key signature is two sharps (F# and C#) and the time signature is common time (C). The music features a flowing melody in the right hand and a supporting bass line in the left hand.

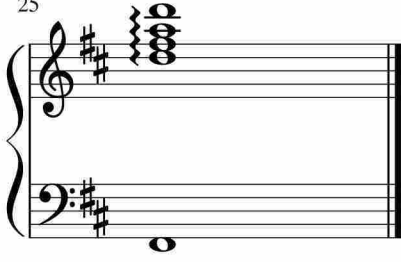
Measures 6-10 of the piano score. The melody continues with some chromatic movement, and the bass line provides harmonic support.

Measures 11-15 of the piano score. The right hand features more complex chordal textures and melodic lines.

Measures 16-19 of the piano score. The piece becomes more rhythmic and textured with repeated chordal patterns in the right hand.

Measures 20-24 of the piano score. The final section shows a continuation of the rhythmic patterns with some melodic resolution.

25



于斯课堂
www.yusi.tv