

wind song

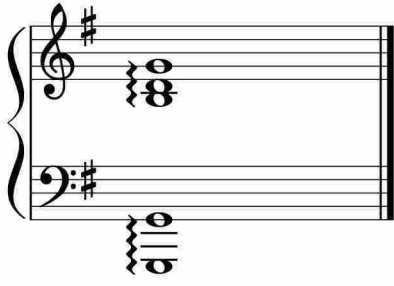
Measures 1-5 of the piece. The music is in 4/4 time with a key signature of one sharp (F#). The melody in the right hand starts with a quarter rest, followed by a quarter note G4, a quarter note A4, and a quarter note B4. The bass line begins with a whole rest, then a quarter note G2, a quarter note A2, and a quarter note B2. The piece features a repeat sign at the beginning of measure 2.

Measures 6-10. Measure 6 begins with a treble clef and a key signature of one sharp. The melody continues with quarter notes G4, A4, B4, and C5. The bass line consists of eighth notes G2, A2, B2, and C3. Measures 9 and 10 contain a first and second ending, both marked with a repeat sign.

Measures 11-15. The melody in the right hand features dotted quarter notes G4, A4, B4, and C5. The bass line continues with eighth notes G2, A2, B2, and C3. A large, faint watermark is visible across the page.

Measures 16-20. The melody in the right hand includes quarter notes G4, A4, B4, and C5, followed by a quarter note D5. The bass line continues with eighth notes G2, A2, B2, and C3. A large, faint watermark is visible across the page.

Measures 21-25. The melody in the right hand features quarter notes G4, A4, B4, and C5. The bass line continues with eighth notes G2, A2, B2, and C3. A large, faint watermark is visible across the page.



于斯课堂
www.yusi.tv