

波罗涅兹舞曲

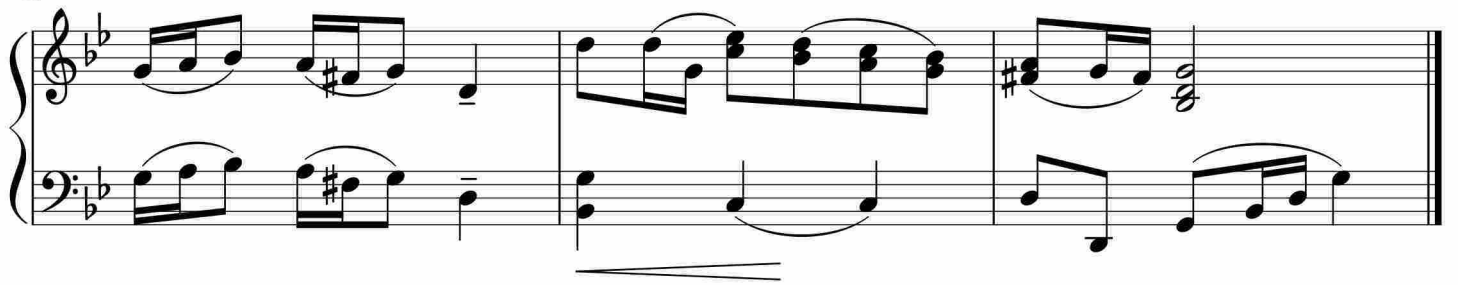
Measures 1-3 of the Polonaise. The music is in 3/4 time with a key signature of two flats. The right hand features a melodic line with eighth and sixteenth notes, while the left hand provides a rhythmic accompaniment with eighth notes. A dynamic marking of *p* (piano) is present in the first measure.

Measures 4-8 of the Polonaise. Measures 4-7 continue the previous pattern. Measure 8 is a repeat sign. A dynamic marking of *mf* (mezzo-forte) is present in the second measure of the repeat.

Measures 9-12 of the Polonaise. Measures 9-10 feature a *diminuendo* (diminishing) dynamic marking. Measures 11-12 feature a *cresc.* (crescendo) dynamic marking. A dynamic marking of *p* (piano) is present in the second measure of measure 12.

Measures 13-16 of the Polonaise. Measures 13-14 feature a *f* (forte) dynamic marking. Measures 15-16 continue the melodic and rhythmic development.

Measures 17-20 of the Polonaise. Measures 17-18 continue the previous pattern. Measures 19-20 feature a dynamic marking of *p* (piano).



于斯课堂
www.yusi.tv