

No.6

60-108

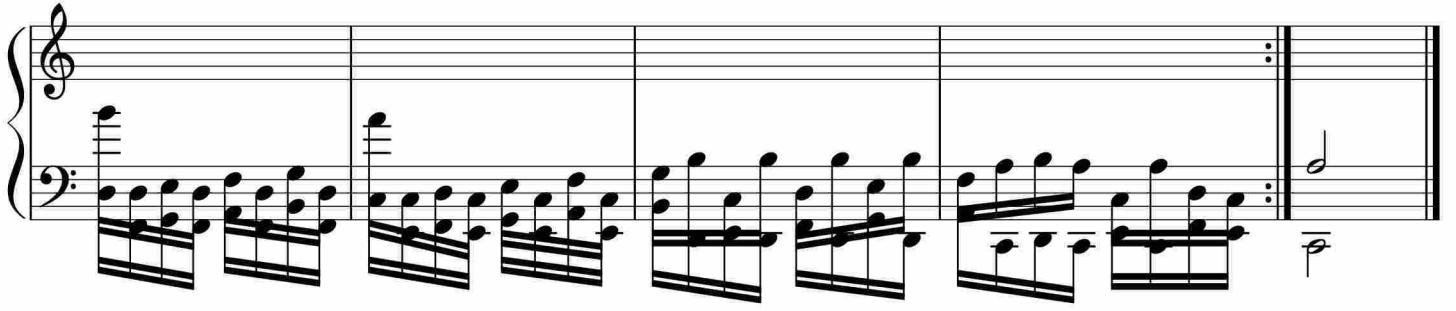
Measures 1-5 of the piece. The music is in 2/4 time. The right hand starts with a treble clef and a key signature of one flat. The left hand starts with a bass clef. The piece begins with a series of eighth-note chords in the left hand, while the right hand remains silent.

Measures 6-10. The right hand begins with a melodic line of eighth notes, while the left hand continues with eighth-note chords.

Measures 11-14. The right hand continues its melodic line, and the left hand maintains the chordal accompaniment.

Measures 15-19. The right hand's melodic line becomes more active, and the left hand's accompaniment continues.

Measures 20-24. The right hand features a more complex melodic pattern, and the left hand continues with the chordal accompaniment.



于斯课堂
www.yusi.tv