

# 友谊地久天长

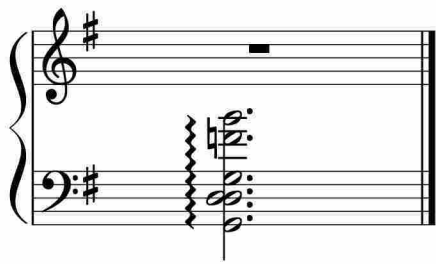
The first system of the piano score for 'Friendship Everlasting' consists of two staves. The right hand (treble clef) begins with a melodic line in G major, starting on G4 and moving through A4, B4, C5, and D5, with various rhythmic values and phrasing. The left hand (bass clef) provides a steady accompaniment with eighth-note patterns and chords.

The second system continues the piece from measure 6. The right hand maintains the melodic theme, while the left hand continues with its accompaniment. A large, faint watermark is visible across the middle of the page.

The third system covers measures 11 to 15. The musical texture remains consistent, with the right hand playing the melody and the left hand providing harmonic support.

The fourth system covers measures 16 to 20. The right hand features some chordal textures and rests, while the left hand continues with its accompaniment.

The fifth system covers measures 21 to 25. The piece concludes with a final melodic phrase in the right hand and a final accompaniment in the left hand.



于斯课堂  
www.yusi.tv