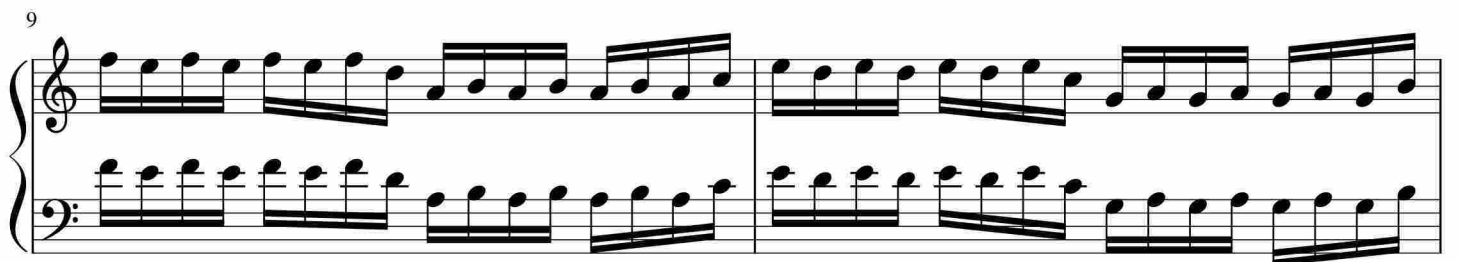
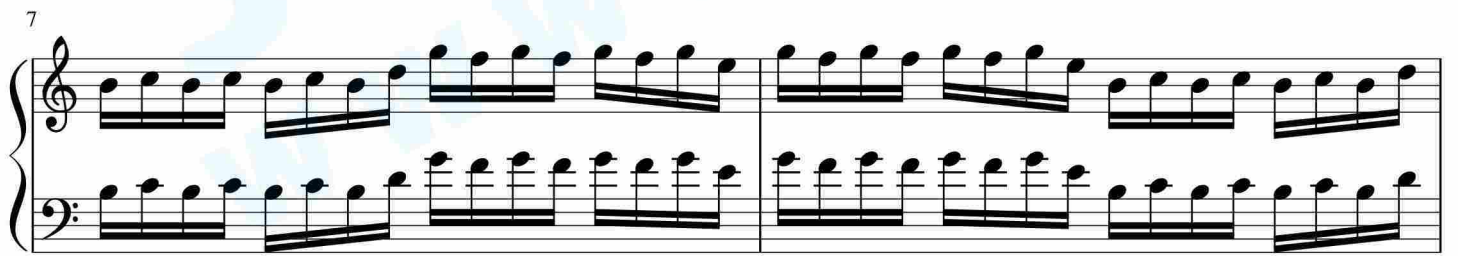
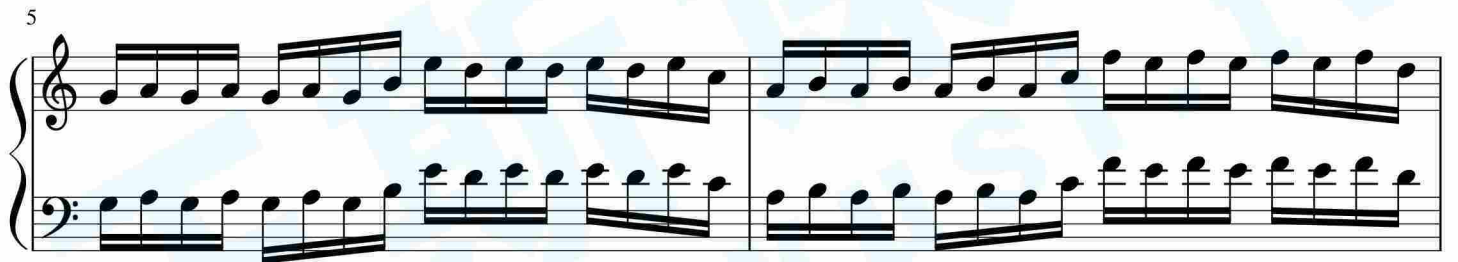
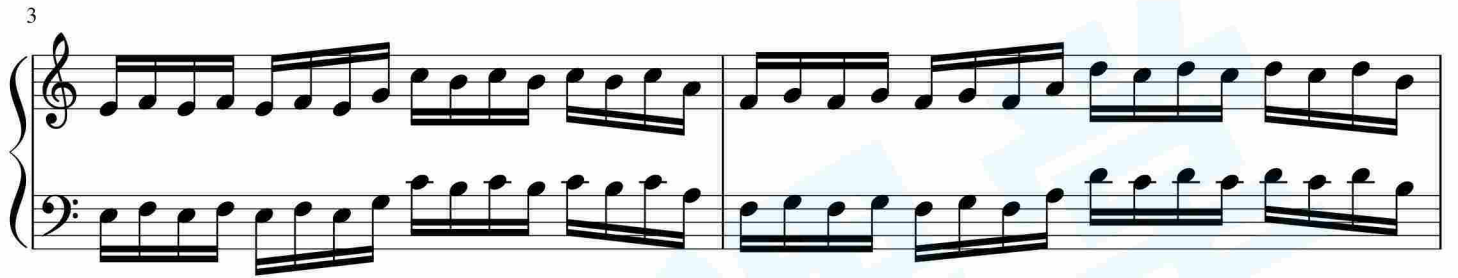
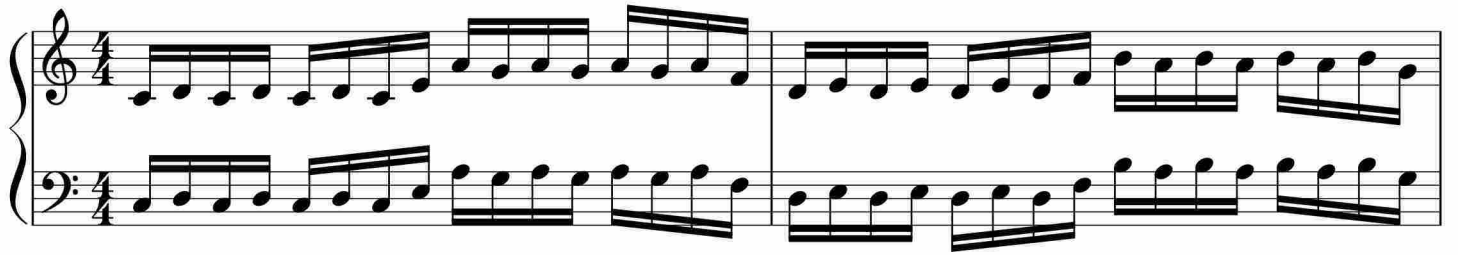


基本练习 (1、2、4、5指) -1



11

Musical notation for measures 11 and 12. The piece is in treble and bass clef. Measure 11 features a continuous eighth-note pattern in both hands. Measure 12 continues this pattern, with the right hand playing a sequence of eighth notes and the left hand playing a similar pattern.

13

Musical notation for measures 13 and 14. Measure 13 continues the eighth-note pattern. Measure 14 concludes the piece with a final chord in the right hand and a whole note in the left hand, followed by a double bar line.