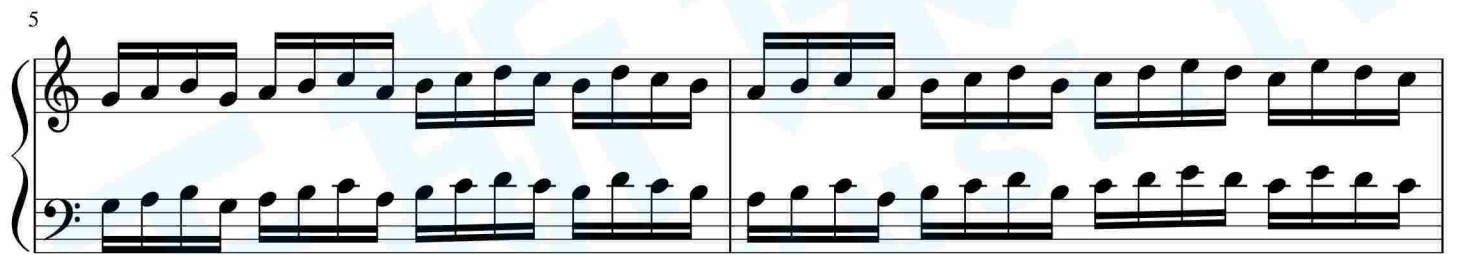
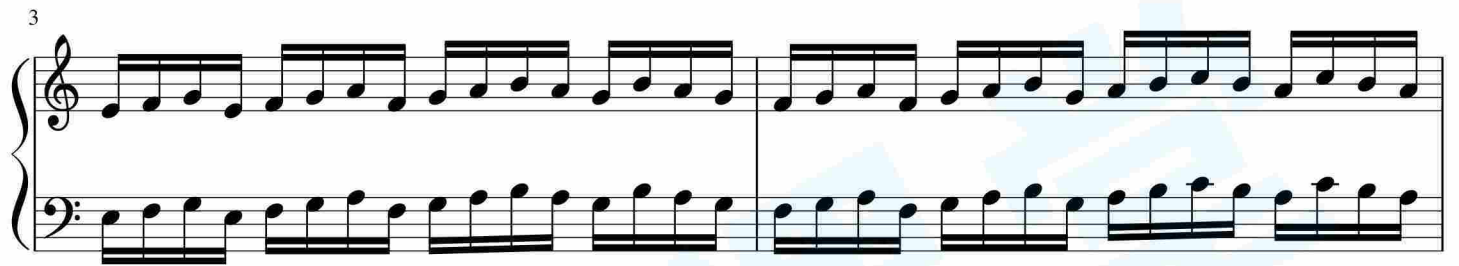


# 基本练习（全部5个手指） -7



11

Musical notation for measures 11 and 12. The piece is in 2/4 time. The right hand (treble clef) plays a melody of eighth notes, while the left hand (bass clef) plays a steady eighth-note accompaniment. The melody in measure 11 is G4-A4-B4-C5, and in measure 12 it is A4-B4-C5-D5. The accompaniment in both measures consists of eighth notes: G3-A3-B3-C4 in measure 11 and A3-B3-C4-D4 in measure 12.

13

Musical notation for measures 13 and 14. The right hand (treble clef) plays a melody of eighth notes, and the left hand (bass clef) plays a steady eighth-note accompaniment. The melody in measure 13 is E4-F4-G4-A4, and in measure 14 it is F4-G4-A4-B4. The accompaniment in both measures consists of eighth notes: G3-A3-B3-C4 in measure 13 and A3-B3-C4-D4 in measure 14. The piece concludes with a double bar line in measure 14.