

小赋格曲I

陈干

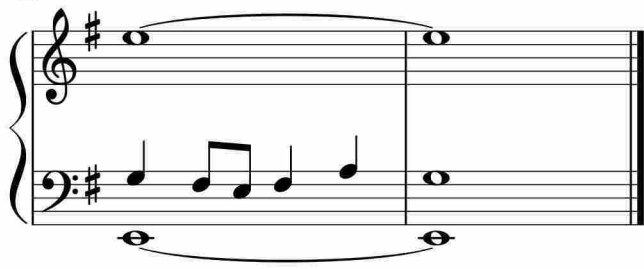
Measures 1-7 of the piece. The music is in G major and 4/4 time. The right hand has whole rests, while the left hand plays a rhythmic pattern of eighth and sixteenth notes.

Measures 8-12. The right hand begins with a melodic line of eighth notes, while the left hand continues with a similar rhythmic pattern.

Measures 13-17. The right hand continues its melodic line, and the left hand provides harmonic support with chords and moving lines.

Measures 18-21. The right hand features a more active melodic line with eighth notes, and the left hand continues with a steady accompaniment.

Measures 22-25. The right hand has a complex melodic line with many sixteenth notes, and the left hand continues with a rhythmic accompaniment.



于斯课堂
www.yusi.tv