

标题

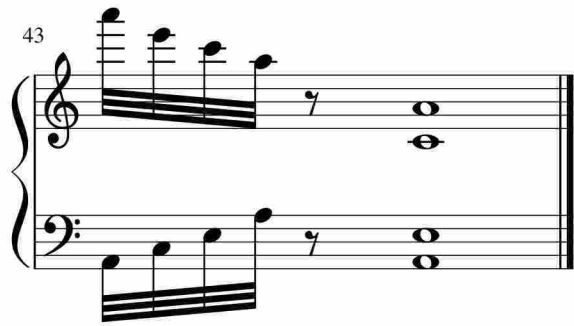
Measures 1-8 of the piece. The music is in 2/4 time. The right hand features a melodic line with eighth and sixteenth notes, while the left hand provides a rhythmic accompaniment with chords and eighth notes.

Measures 9-17. The right hand continues the melodic development, and the left hand maintains the accompaniment pattern. A large watermark is visible across the page.

Measures 18-25. The right hand introduces a more complex texture with sixteenth-note patterns, while the left hand continues with the accompaniment.

Measures 26-34. The right hand features a series of chords and melodic fragments, and the left hand continues the accompaniment.

Measures 35-42. The right hand has a more active role with sixteenth-note patterns, and the left hand continues the accompaniment.



于斯课堂
www.yusi.tv