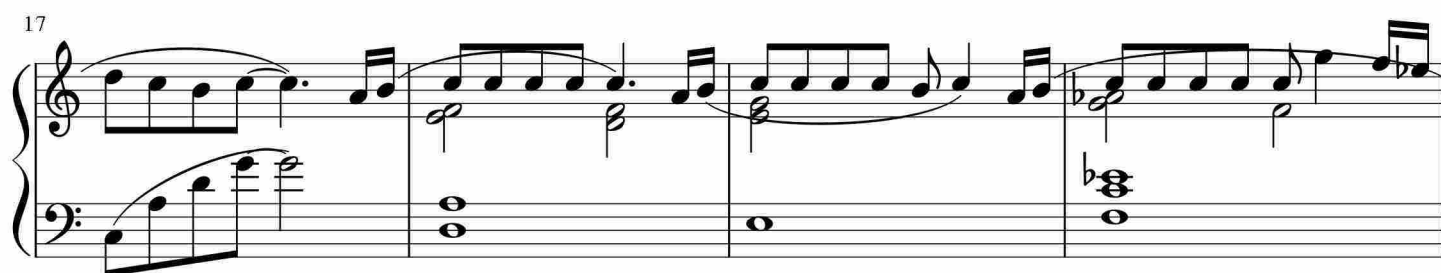
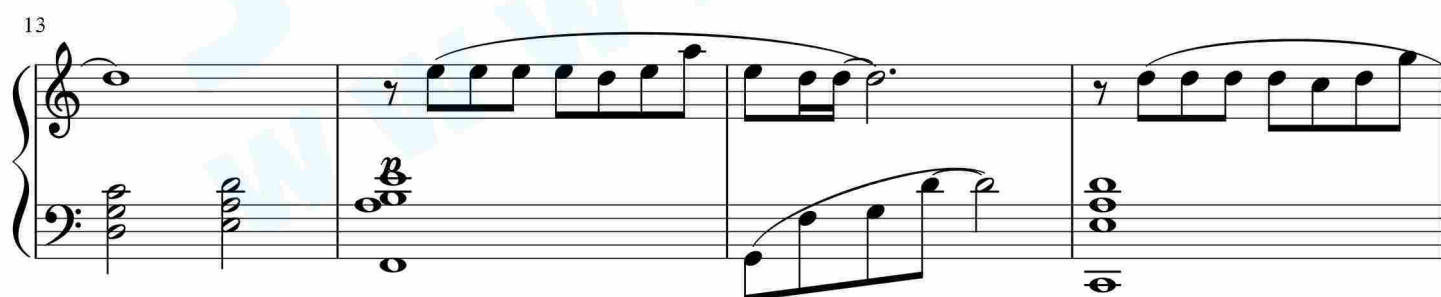
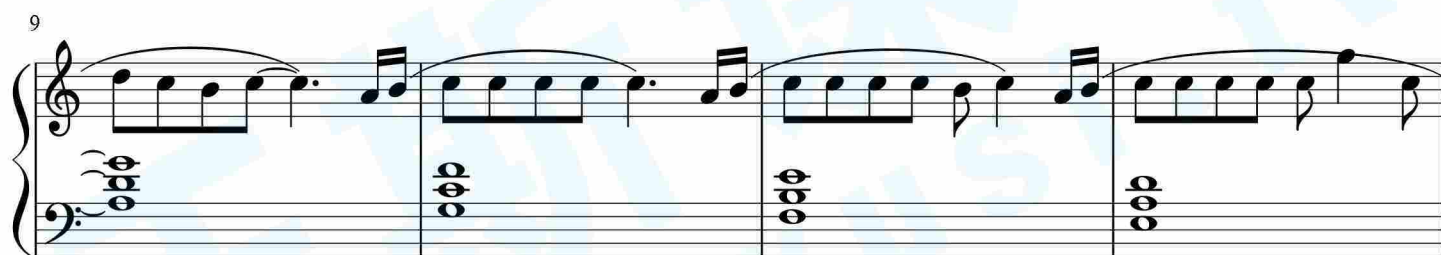
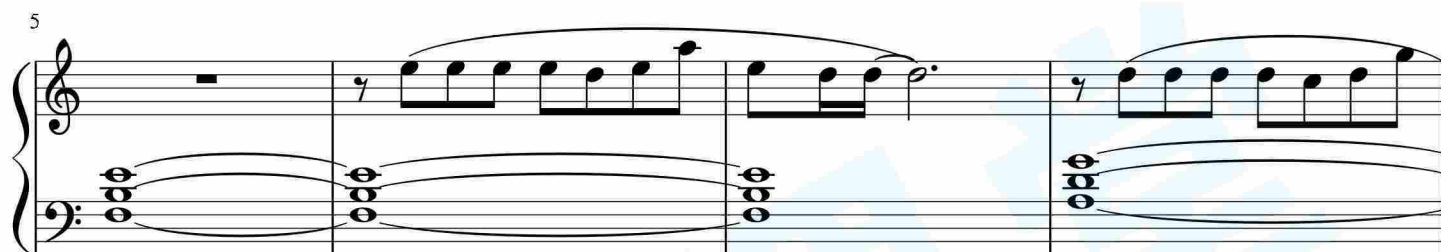
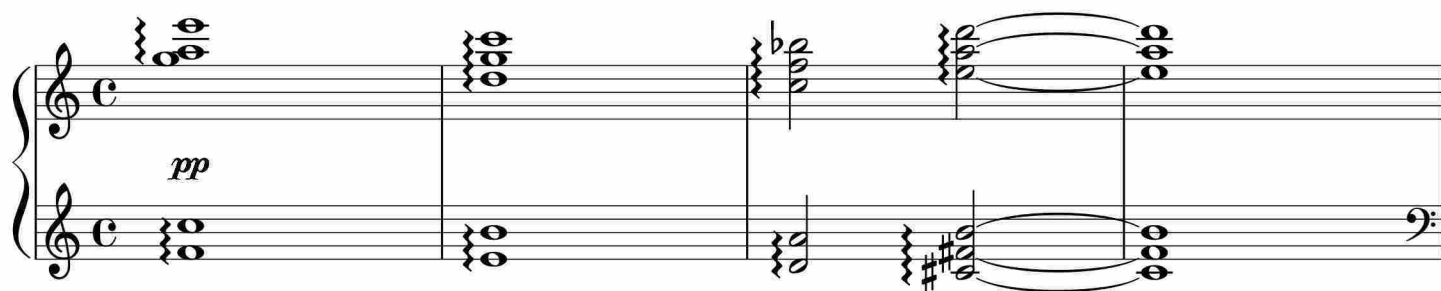


One Summer's Day(あの夏へ)

作曲：久石让



21

25

25

29

33

37

41

45

47

51

55

58

62

66

mf

70

mf

74

mf

77

f

80

mf

83

mf

86

Measures 86-88 of a piano piece. Measure 86 features a treble clef with a whole rest and a bass clef with a triplet of eighth notes, marked with a forte (*f*) dynamic. Measures 87 and 88 continue with complex rhythmic patterns, including triplets and sixteenth notes, with a key signature change to one sharp (F#) in measure 88.

89

Measures 89-90. Measure 89 is marked mezzo-piano (*mp*) and contains dense sixteenth-note passages in both staves. Measure 90 begins with a treble clef containing a whole rest and a forte (*f*) dynamic, while the bass clef continues with sixteenth-note patterns.

90

Measures 91-92. Measure 91 features a treble clef with a whole rest and a forte (*f*) dynamic, and a bass clef with sixteenth-note patterns. Measure 92 continues the bass clef pattern and introduces a new treble clef pattern.

91

Measures 93-94. Measure 93 has a treble clef with a whole rest and a bass clef with sixteenth-note patterns. Measure 94 continues the bass clef pattern and introduces a new treble clef pattern.

92

Measures 95-96. Measure 95 features a treble clef with a whole rest and a bass clef with sixteenth-note patterns. Measure 96 continues the bass clef pattern and introduces a new treble clef pattern.