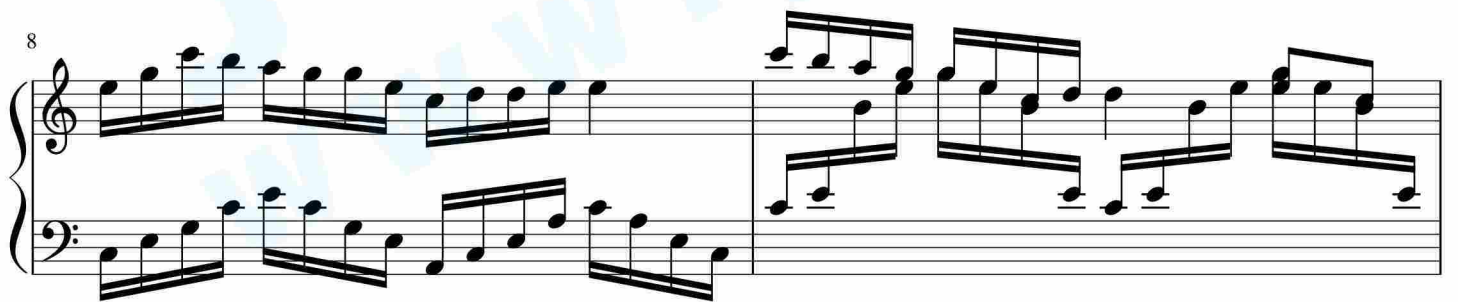
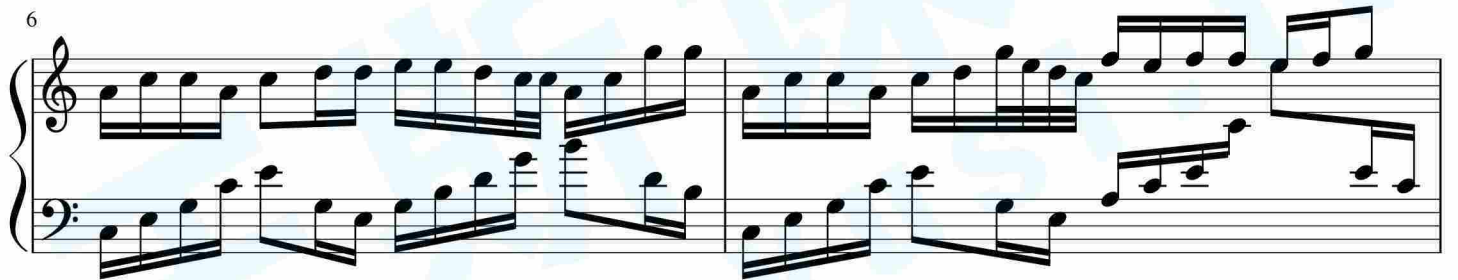
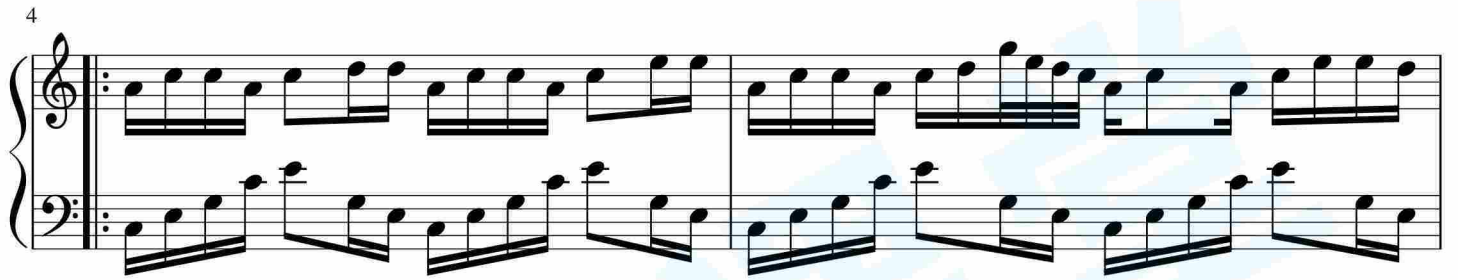
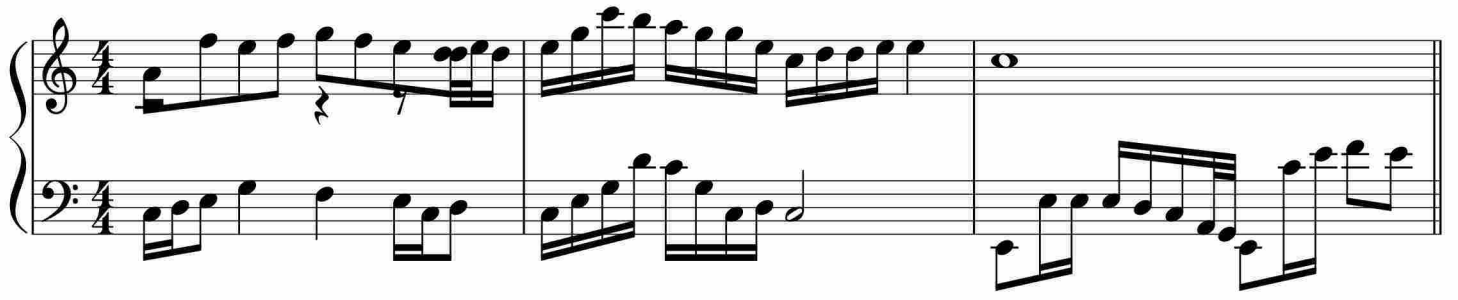


明天过后



12

Musical notation for measures 12 and 13. The system consists of a treble clef staff and a bass clef staff. Measure 12 features a continuous eighth-note pattern in both hands. Measure 13 continues this pattern with some chordal changes in the right hand.

14

Musical notation for measures 14, 15, and 16. Measure 14 continues the eighth-note pattern. Measure 15 has a first ending bracket labeled '1.' above it. Measure 16 concludes the section with a final chord in the right hand.

17

Musical notation for measures 17, 18, and 19. Measure 17 continues the eighth-note pattern. Measure 18 has a repeat sign with first and second endings. Measure 19 continues the eighth-note pattern.

20

Musical notation for measures 20 and 21. Measure 20 continues the eighth-note pattern. Measure 21 concludes the section with a final chord in the right hand.

22

Musical notation for measures 22 and 23. Measure 22 continues the eighth-note pattern. Measure 23 concludes the section with a final chord in the right hand.

24

Musical notation for measures 24 and 25. Measure 24 continues the eighth-note pattern. Measure 25 concludes the section with a final chord in the right hand.

26

Musical notation for measures 26 and 27. The piece is in 2/4 time. Measure 26 features a complex texture with sixteenth-note runs in both hands. Measure 27 continues with similar rhythmic patterns, including some chords and rests.

28

Musical notation for measures 28, 29, and 30. Measure 28 has a simple accompaniment in the bass and a whole note in the treble. Measure 29 has a more active bass line and a melodic line in the treble. Measure 30 concludes with a final chord in both hands.

于斯课堂
www.yusi.tv