

2-夏仙女

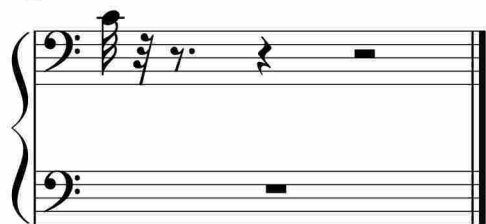
Measures 1-4 of the piece. The music is in 3/8 time, with a key signature of one sharp (F#). The first system consists of two staves. The upper staff begins with a treble clef and a dynamic marking of *p*. The lower staff begins with a bass clef. The piece starts with a rest in the first measure, followed by a 12-measure rest in the second measure. The melody in the upper staff is primarily eighth and sixteenth notes, with some rests. The bass line consists of chords and single notes.

Measures 5-8 of the piece. The first system consists of two staves. The upper staff begins with a treble clef and a dynamic marking of *p*. The lower staff begins with a bass clef. The melody in the upper staff continues with eighth and sixteenth notes. The bass line features chords and single notes. A watermark is visible in the background.

Measures 9-12 of the piece. The first system consists of two staves. The upper staff begins with a treble clef and a dynamic marking of *mf*. The lower staff begins with a bass clef. The melody in the upper staff continues with eighth and sixteenth notes. The bass line features chords and single notes. A watermark is visible in the background.

Measures 13-16 of the piece. The first system consists of two staves. The upper staff begins with a treble clef. The lower staff begins with a bass clef. The melody in the upper staff continues with eighth and sixteenth notes. The bass line features chords and single notes. A watermark is visible in the background.

Measures 17-20 of the piece. The first system consists of two staves. The upper staff begins with a treble clef. The lower staff begins with a bass clef. The melody in the upper staff continues with eighth and sixteenth notes. The bass line features chords and single notes. A watermark is visible in the background.



于斯课堂
www.yusi.tv