

narcissus

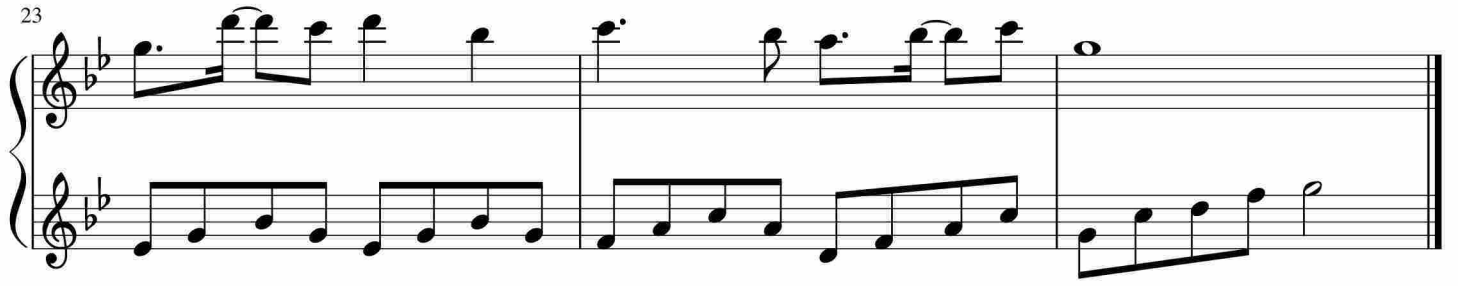
Measures 1-4 of the piece. The music is in 3/4 time with a key signature of two flats (B-flat and E-flat). The right hand features a melodic line with slurs and accents, while the left hand provides a steady eighth-note accompaniment. A repeat sign is present at the beginning of the first measure.

Measures 5-8. The melodic line in the right hand continues with slurs and accents, and the eighth-note accompaniment in the left hand remains consistent.

Measures 9-13. The musical texture continues with the same melodic and accompanimental patterns.

Measures 14-18. This section includes a first ending (marked '1.') and a second ending (marked '2.'). The first ending leads back to the beginning of the piece, while the second ending concludes the section.

Measures 19-22. The final section of the piece, showing the continuation of the melodic and accompanimental lines.



于斯课堂
www.yusi.tv