

标题

于斯课堂
www.yusi.tv

~~2-温暖(音色垫组)~~

主旋律1

mp

主旋律2

ff

节拍

p

声音贝斯

钢片琴

管钟

钢弦吉他

mp

尼龙弦吉他

过激吉他

八音盒

6-金属 (音色垫组)

弦乐群1

合成弦乐1

f

合唱 啊

主旋律1

主旋律2

节拍

声音贝斯

钢片琴

管钟

钢弦吉他

尼龙弦吉他

过激吉他

八音盒

6-金属 (音色垫组)

弦乐群1

合成弦乐1


合唱 啊

2-温暖(音色垫组)

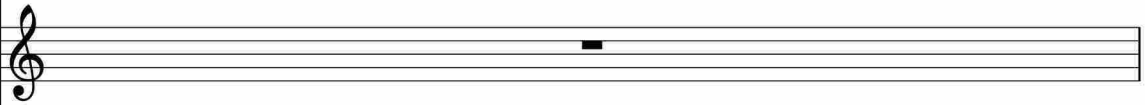
主旋律1



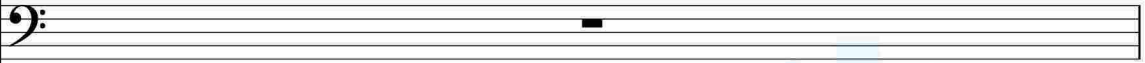
主旋律2



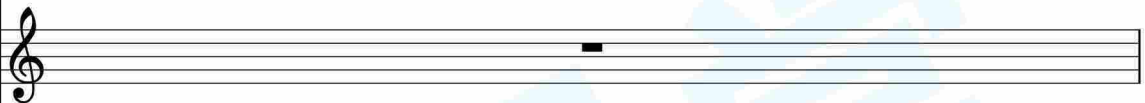
节拍



声音贝斯




钢片琴



管钟



钢弦吉他



尼龙弦吉他



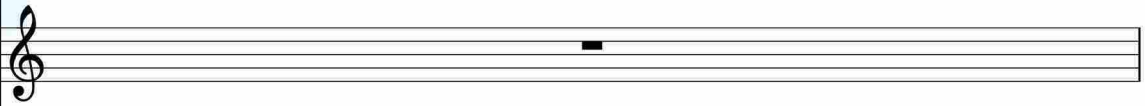
过激吉他



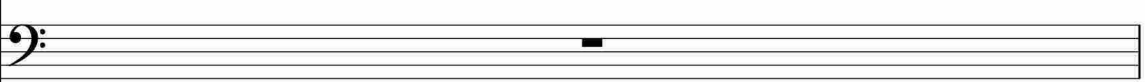
八音盒



6-金属 (音色垫组)



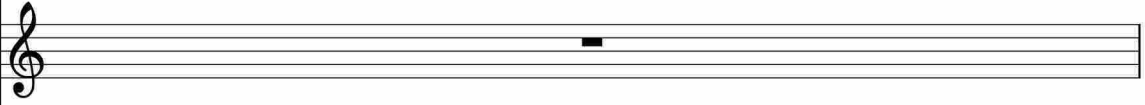
弦乐群1



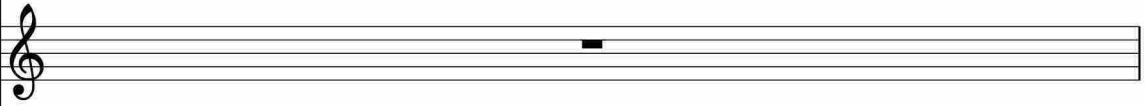
合成弦乐1



合唱 啊



4
2-温暖(音色垫组)



主旋律1

主旋律2

节拍

声音贝斯

钢片琴

管钟

钢弦吉他

尼龙弦吉他

过激吉他

八音盒

6-金属 (音色垫组)

弦乐群1

合成弦乐1

合唱 啊

2-温暖(音色垫组)

6

主旋律1

主旋律2

节拍

声音贝斯

钢片琴

管钟

钢弦吉他

尼龙弦吉他

过激吉他

八音盒

6-金属 (音色垫组)

弦乐群1

合成弦乐1

合唱 啊

6

2-温暖(音色垫组)

97. FX 1 (rain)

ppp *pp* *mp* *mf*

mp

主旋律1

主旋律2

节拍

声音贝斯

钢片琴

管钟

钢弦吉他

尼龙弦吉他

过激吉他

八音盒

6-金属 (音色垫组)

弦乐群1

合成弦乐1

合唱 啊

2-温暖(音色垫组)

主旋律1

主旋律2

节拍

声音贝斯

钢片琴

管钟

钢弦吉他

尼龙弦吉他

过激吉他

八音盒

6-金属 (音色垫组)

弦乐群1

合成弦乐1

合唱 啊

2-温暖(音色垫组)

主旋律1

主旋律2

节拍

声音贝斯

钢片琴

管钟

钢弦吉他

尼龙弦吉他

过激吉他

八音盒

6-金属 (音色垫组)

弦乐群1

合成弦乐1

合唱 啊

2-温暖(音色垫组)

主旋律1

主旋律2

节拍

声音贝斯

钢片琴

管钟

钢弦吉他

尼龙弦吉他

过激吉他

八音盒

6-金属 (音色垫组)

弦乐群1

合成弦乐1

合唱 啊

10
2-温暖(音色垫组)

主旋律1

主旋律2

节拍

声音贝斯

钢片琴

管钟

钢弦吉他

尼龙弦吉他

过激吉他

八音盒

6-金属 (音色垫组)

弦乐群1

合成弦乐1

合唱 啊

2-温暖(音色垫组)

The musical score for page 11 consists of 14 staves. The instruments and parts are: Main Melody 1 (Bass clef), Main Melody 2 (Treble clef), Tempo (Treble clef), Bass (Bass clef), Steel Piano (Treble clef), Tube Bell (Treble clef), Steel String Guitar (Treble clef), Nylon String Guitar (Treble clef), Overdrive Guitar (Treble clef), Music Box (Treble clef), 6-Metal (音色垫组) (Treble clef), String Ensemble 1 (Bass clef), Synthesized Strings 1 (Treble clef), Chorus (啊) (Treble clef), and 2-Warm (音色垫组) (Treble clef). The score includes various musical notations such as rests, notes, and beams. A large watermark '五线谱网 WU XIAN PU WANG' is visible across the page.

主旋律1

主旋律2

节拍

声音贝斯

钢片琴

管钟

钢弦吉他

尼龙弦吉他

过激吉他

八音盒

6-金属 (音色垫组)

弦乐群1

合成弦乐1

合唱 啊

12
2-温暖(音色垫组)

主旋律1

主旋律2

节拍

声音贝斯

钢片琴

管钟

钢弦吉他

尼龙弦吉他

过激吉他

八音盒

6-金属 (音色垫组)

弦乐群1

合成弦乐1

合唱 啊

2-温暖(音色垫组)

主旋律1

主旋律2

节拍

声音贝斯

钢片琴

管钟

钢弦吉他

尼龙弦吉他

过激吉他

八音盒

6-金属 (音色垫组)

弦乐群1

合成弦乐1

合唱 啊

2-温暖(音色垫组)

主旋律1

主旋律2

节拍

声音贝斯

钢片琴

管钟

钢弦吉他

尼龙弦吉他

过激吉他

八音盒

6-金属 (音色垫组)

弦乐群1

合成弦乐1

合唱 啊

2-温暖(音色垫组)

主旋律1

主旋律2

节拍

声音贝斯

钢片琴

管钟

钢弦吉他

尼龙弦吉他

过激吉他

八音盒

6-金属 (音色垫组)

弦乐群1

合成弦乐1

合唱 啊

mp

2-温暖(音色垫组)

The image shows a musical score for a track starting at measure 16. The score is arranged in a vertical stack of staves. The instruments and parts are: Main Melody 1 (Bass clef), Main Melody 2 (Treble clef), Rhythm (Treble clef), Bass (Bass clef), Steel Drum (Treble clef), Tubular Bell (Treble clef), Steel String Guitar (Treble clef), Nylon String Guitar (Treble clef), Overdrive Guitar (Treble clef), Music Box (Treble clef), 6-Metal Pads (Treble clef), String Ensemble 1 (Bass clef), Synthesized Strings 1 (Treble clef), Chorus 'A' (Treble clef), and Warm Pads (Treble clef). The tempo is marked 'q tempo' and the dynamic is 'mp'. A large watermark '51WU.COM' is visible across the score.

主旋律1

主旋律2

节拍

声音贝斯

钢片琴

管钟

钢弦吉他

尼龙弦吉他

过激吉他

八音盒

6-金属 (音色垫组)

弦乐群1

合成弦乐1

合唱 啊

2-温暖(音色垫组)

The musical score for page 17 consists of 14 staves. The instruments and parts are:

- 主旋律1**: Bass clef, starting with a dotted quarter note followed by eighth notes.
- 主旋律2**: Treble clef, starting with a quarter note followed by eighth notes.
- 节拍**: Treble clef, starting with a quarter note.
- 声音贝斯**: Bass clef, playing a steady eighth-note bass line.
- 钢片琴**: Treble clef, playing a sustained chord.
- 管钟**: Treble clef, playing a sustained chord.
- 钢弦吉他**: Treble clef, playing a rhythmic pattern with eighth notes.
- 尼龙弦吉他**: Treble clef, playing a rhythmic pattern with eighth notes.
- 过激吉他**: Treble clef, playing a sustained chord.
- 八音盒**: Treble clef, playing a sustained chord.
- 6-金属 (音色垫组)**: Treble clef, playing a sustained chord.
- 弦乐群1**: Bass clef, playing a sustained chord.
- 合成弦乐1**: Treble clef, playing a sustained chord with a *mf* dynamic marking.
- 合唱 啊**: Treble clef, starting with a rest and then a long note with a *mp* dynamic marking.
- 2-温暖(音色垫组)**: Treble clef, playing a sustained chord with a *mp* dynamic marking.

主旋律1

主旋律2

节拍

声音贝斯

钢片琴

管钟

钢弦吉他

尼龙弦吉他

过激吉他

八音盒

6-金属 (音色垫组)

弦乐群1

合成弦乐1

合唱 啊

2-温暖(音色垫组)

主旋律1

主旋律2

节拍

声音贝斯

钢片琴

管钟

钢弦吉他

尼龙弦吉他

过激吉他

八音盒

6-金属 (音色垫组)

弦乐群1

合成弦乐1

合唱 啊

2-温暖(音色垫组)

主旋律1

主旋律2

节拍

声音贝斯

钢片琴

管钟

钢弦吉他

尼龙弦吉他

过激吉他

八音盒

6-金属 (音色垫组)

弦乐群1

合成弦乐1

合唱 啊

2-温暖(音色垫组)

主旋律1

主旋律2

节拍

声音贝斯

钢片琴

管钟

钢弦吉他

尼龙弦吉他

过激吉他

八音盒

6-金属 (音色垫组)

弦乐群1

合成弦乐1

合唱 啊

2-温暖(音色垫组)

主旋律1

主旋律2

节拍

声音贝斯

钢片琴

管钟

钢弦吉他

ppp

pp

p

mp

尼龙弦吉他

过激吉他

八音盒

6-金属 (音色垫组)

弦乐群1

合成弦乐1

合唱 啊

2-温暖(音色垫组)

主旋律1

主旋律2

节拍

声音贝斯

钢片琴

管钟

钢弦吉他

尼龙弦吉他

过激吉他

八音盒

6-金属 (音色垫组)

弦乐群1

合成弦乐1

合唱 啊

p

2-温暖(音色垫组)

Detailed description of the musical score: The score consists of 14 staves. The first three staves (主旋律1, 主旋律2, 节拍) contain rests. The 声音贝斯 staff has a bass line of eighth notes. The 钢片琴, 管钟, 过激吉他, 八音盒, and 6-金属 staves contain rests. The 弦乐群1 staff has a long, sustained note with a hairpin. The 合成弦乐1 staff contains a rest. The 合唱 啊 staff has a vocal line with a piano (*p*) dynamic marking. The 2-温暖 staff contains a rest. A large watermark '五线谱网' is visible in the background.

主旋律1

主旋律2

节拍

声音贝斯

钢片琴

管钟

钢弦吉他

尼龙弦吉他

过激吉他

八音盒

6-金属 (音色垫组)

弦乐群1

合成弦乐1

合唱 啊

2-温暖(音色垫组)

Detailed description of the musical score: The score consists of 14 staves. The first three staves (主旋律1, 主旋律2, 节拍) contain rests. The 声音贝斯 staff shows a bass line with eighth notes. The 钢片琴 staff has a rest. The 管钟 staff has a rhythmic pattern of eighth notes. The 钢弦吉他和 尼龙弦吉他的 staves have similar rhythmic patterns. The 过激吉他和 八音盒 staves have rests. The 6-金属 staff has a rest. The 弦乐群1 staff has a long note with a fermata. The 合成弦乐1 staff has a rest. The 合唱 啊 staff has a vocal line with eighth notes. The 2-温暖 staff has a rest.

主旋律1

主旋律2

节拍

声音贝斯

钢片琴

管钟

钢弦吉他

尼龙弦吉他

过激吉他

八音盒

6-金属 (音色垫组)

弦乐群1

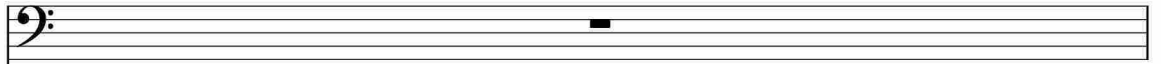
合成弦乐1

合唱 啊

2-温暖(音色垫组)

The musical score for page 25 consists of 14 staves. The instruments and parts are: Main Melody 1 (Bass clef), Main Melody 2 (Treble clef), Tempo (Treble clef), Bass (Bass clef), Steel Piano (Treble clef), Chimes (Treble clef), Steel String Guitar (Treble clef), Nylon String Guitar (Treble clef), Overdriven Guitar (Treble clef), Music Box (Treble clef), 6-Metal (音色垫组) (Treble clef), String Ensemble 1 (Bass clef), Synthesized Strings 1 (Treble clef), Chorus 'Ah' (Treble clef), and 2-Warm (音色垫组) (Treble clef). The score includes various musical notations such as notes, rests, and dynamic markings. A large watermark '五线谱网' is visible across the page.

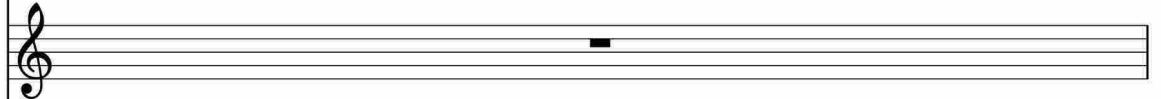
主旋律1



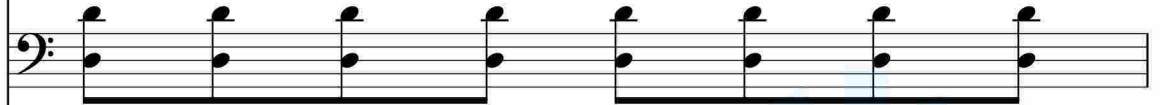
主旋律2



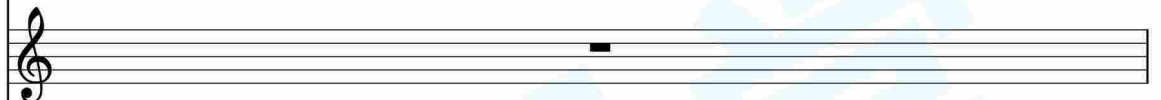
节拍



声音贝斯



钢片琴



管钟



mp

p

pp

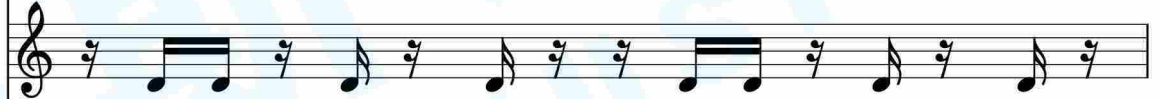
ppp

pppp

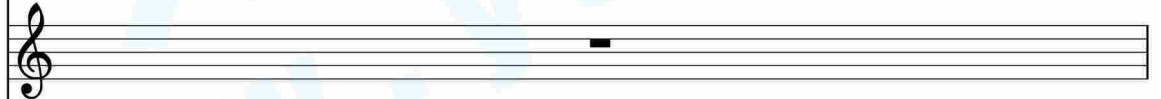
钢弦吉他



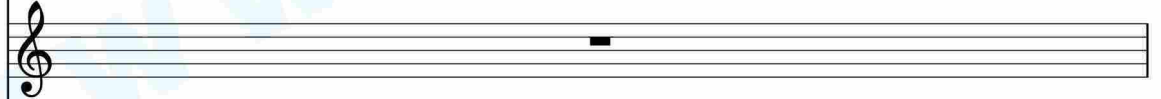
尼龙弦吉他



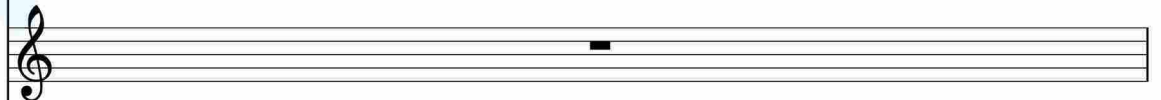
过激吉他



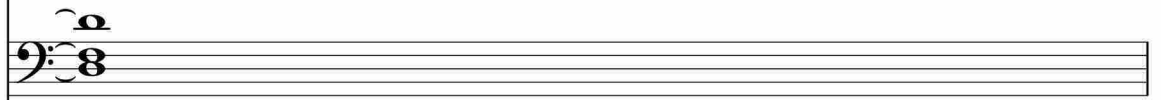
八音盒



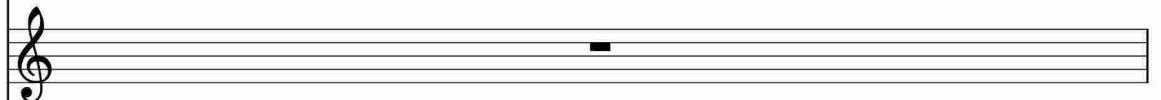
6-金属 (音色垫组)



弦乐群1



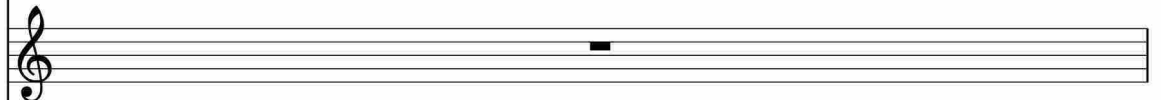
合成弦乐1



合唱 啊



2-温暖(音色垫组)



主旋律1

主旋律2

节拍

声音贝斯

钢片琴

管钟

钢弦吉他

尼龙弦吉他

过激吉他

八音盒

6-金属 (音色垫组)

弦乐群1

合成弦乐1

合唱 啊

2-温暖(音色垫组)

The musical score for page 27 consists of 15 staves. The instruments and parts are: Main Melody 1 (Bass clef), Main Melody 2 (Treble clef), Tempo (Treble clef), Sound Bass (Bass clef), Steel Piano (Treble clef), Tube Bell (Treble clef), Steel String Guitar (Treble clef), Nylon String Guitar (Treble clef), Overdrive Guitar (Treble clef), Music Box (Treble clef), 6-Metal (音色垫组) (Treble clef), String Ensemble 1 (Bass clef), Synthesized Strings 1 (Treble clef), Chorus (合唱 啊) (Treble clef), and 2-Warm (音色垫组) (Treble clef). The score includes a large watermark reading '五线谱网 WU XIAN PU WANG'.

主旋律1

Musical staff for Main Melody 1 in bass clef. It contains a series of notes with accents and dynamics, including a *ff* marking.

主旋律2

Musical staff for Main Melody 2 in treble clef, showing a single note with a *ff* dynamic marking.

节拍

Musical staff for the tempo/clock part in treble clef, showing a single note with a *mf* dynamic marking.

声音贝斯

Musical staff for Sound Bass in bass clef, showing a series of notes with a *mf* dynamic marking.

钢片琴

Musical staff for Steel Piano in treble clef, showing a single note with a *pp* dynamic marking.

管钟

Musical staff for Tube Bell in treble clef, showing a single note with a *pp* dynamic marking.

钢弦吉他

Musical staff for Steel String Guitar in treble clef, showing a series of notes with a *pp* dynamic marking.

尼龙弦吉他

Musical staff for Nylon String Guitar in treble clef, showing a single note with a *pp* dynamic marking.

过激吉他

Musical staff for Overdriven Guitar in treble clef, showing a single note with a *pp* dynamic marking.

八音盒

Musical staff for Music Box in treble clef, showing a single note with a *pp* dynamic marking.

6-金属 (音色垫组)

Musical staff for Metal (sound pad group) in treble clef, showing a single note with a *pp* dynamic marking.

弦乐群1

Musical staff for String Ensemble 1 in bass clef, showing a single note with a *pp* dynamic marking.

合成弦乐1

Musical staff for Synthesized String 1 in treble clef, showing a single note with a *pp* dynamic marking.

合唱 啊

Musical staff for Chorus Ah in treble clef, showing a single note with a *pp* dynamic marking.

Musical staff for Warm (sound pad group) in treble clef, showing a single note with a *pp* dynamic marking.

主旋律1

主旋律2

节拍

声音贝斯

钢片琴

管钟

钢弦吉他

尼龙弦吉他

过激吉他

八音盒

6-金属 (音色垫组)

弦乐群1

合成弦乐1

合唱 啊

2-温暖(音色垫组)

主旋律1

主旋律2

节拍

声音贝斯

钢片琴

管钟

钢弦吉他

尼龙弦吉他

过激吉他

八音盒

6-金属 (音色垫组)

弦乐群1

合成弦乐1

合唱 啊

2-温暖(音色垫组)

This musical score page, numbered 30, contains 14 staves. The instruments and parts are:

- 主旋律1 (Main Melody 1): Bass clef, featuring a sequence of notes with accents.
- 主旋律2 (Main Melody 2): Treble clef, mostly silent with a few notes.
- 节拍 (Tempo): Treble clef, showing a tempo marking of 8.
- 声音贝斯 (Sound Bass): Bass clef, playing a rhythmic pattern of eighth notes.
- 钢片琴 (Steel Plate Piano): Treble clef, mostly silent.
- 管钟 (Tubular Bell): Treble clef, mostly silent.
- 钢弦吉他 (Steel String Guitar): Treble clef, playing a rhythmic pattern with accents.
- 尼龙弦吉他 (Nylon String Guitar): Treble clef, mostly silent.
- 过激吉他 (Overdrive Guitar): Treble clef, mostly silent.
- 八音盒 (Music Box): Treble clef, mostly silent.
- 6-金属 (音色垫组) (6-Metal (Sound Pad Group)): Treble clef, mostly silent.
- 弦乐群1 (String Ensemble 1): Bass clef, playing a sustained chord with a swell effect.
- 合成弦乐1 (Synthesized String 1): Treble clef, mostly silent.
- 合唱 啊 (Chorus Ah): Treble clef, mostly silent.
- 2-温暖(音色垫组) (2-Warm (Sound Pad Group)): Treble clef, mostly silent.

 A large, light blue watermark '五线谱网 WU XIAN PU WANG' is overlaid diagonally across the page.

主旋律1

Musical staff for Main Melody 1 in bass clef. It contains a sequence of notes: a quarter note G2, a dotted quarter note G2, a dotted quarter note G2, a quarter note G2, a dotted quarter note G2, a dotted quarter note G2, a quarter note G2, and a dotted quarter note G2. There are rests in the first and last measures.

主旋律2

Musical staff for Main Melody 2 in treble clef, containing a whole rest.

节拍

Musical staff for Tempo in treble clef, containing a whole rest.

声音贝斯

Musical staff for Sound Bass in bass clef. It contains a sequence of notes: a quarter note G2, a quarter note G2, a quarter note G2, a quarter note G2, a quarter note G2, a quarter note G2, a quarter note G2, and a quarter note G2.

钢片琴

Musical staff for Steel Piano in treble clef, containing a whole rest.

管钟

Musical staff for Chimes in treble clef, containing a whole rest.

钢弦吉他

Musical staff for Steel String Guitar in treble clef. It contains a sequence of notes: a quarter note G2, a quarter note G2, a quarter note G2, a quarter note G2, a quarter note G2, a quarter note G2, a quarter note G2, and a quarter note G2.

尼龙弦吉他

Musical staff for Nylon String Guitar in treble clef, containing a whole rest.

过激吉他

Musical staff for Overdrive Guitar in treble clef, containing a whole rest.

八音盒

Musical staff for Music Box in treble clef, containing a whole rest.

6-金属 (音色垫组)

Musical staff for Metal (Sound Pad Group) in treble clef, containing a whole rest.

弦乐群1

Musical staff for String Ensemble 1 in bass clef, containing a whole rest.

合成弦乐1

Musical staff for Synthesized String 1 in treble clef, containing a whole rest.

合唱 啊

Musical staff for Chorus Ah in treble clef, containing a whole rest.

2-温暖(音色垫组)

Musical staff for Warm (Sound Pad Group) in treble clef, containing a whole rest.

主旋律1

主旋律2

节拍

声音贝斯

钢片琴

管钟

钢弦吉他

尼龙弦吉他

过激吉他

八音盒

6-金属 (音色垫组)

弦乐群1

合成弦乐1

合唱 啊

2-温暖(音色垫组)

This musical score page (numbered 32) contains 14 staves. The instruments and parts are:

- 主旋律1**: Bass clef, featuring a melodic line with dotted notes and rests.
- 主旋律2**: Treble clef, mostly silent with a few notes.
- 节拍**: Treble clef, mostly silent.
- 声音贝斯**: Bass clef, playing a steady bass line of eighth notes.
- 钢片琴**: Treble clef, mostly silent.
- 管钟**: Treble clef, mostly silent.
- 钢弦吉他**: Treble clef, playing a rhythmic pattern with eighth notes.
- 尼龙弦吉他**: Treble clef, mostly silent.
- 过激吉他**: Treble clef, mostly silent.
- 八音盒**: Treble clef, mostly silent.
- 6-金属 (音色垫组)**: Treble clef, mostly silent.
- 弦乐群1**: Bass clef, playing a long, sustained note with a hairpin dynamic.
- 合成弦乐1**: Treble clef, playing a long, sustained note with a hairpin dynamic, starting with a *mf* dynamic marking.
- 合唱 啊**: Treble clef, mostly silent.
- 2-温暖(音色垫组)**: Treble clef, playing a long, sustained note with a hairpin dynamic.

 A large, faint watermark is visible across the center of the page.

主旋律1

主旋律2

节拍

声音贝斯

钢片琴

管钟

钢弦吉他

尼龙弦吉他

过激吉他

八音盒

6-金属 (音色垫组)

弦乐群1

合成弦乐1

合唱 啊

2-温暖(音色垫组)

The musical score for page 33 consists of 14 staves. The top staff, '主旋律1', is in bass clef and contains a melodic line with a key signature change to one sharp (F#) at the beginning. The second staff, '主旋律2', is in treble clef and contains a whole rest. The third staff, '节拍', is in treble clef and contains a whole rest. The fourth staff, '声音贝斯', is in bass clef and contains a bass line with eighth notes. The fifth staff, '钢片琴', is in treble clef and contains a whole rest. The sixth staff, '管钟', is in treble clef and contains a whole rest. The seventh staff, '钢弦吉他', is in treble clef and contains a guitar line with eighth notes and slash marks. The eighth staff, '尼龙弦吉他', is in treble clef and contains a whole rest. The ninth staff, '过激吉他', is in treble clef and contains a whole rest. The tenth staff, '八音盒', is in treble clef and contains a whole rest. The eleventh staff, '6-金属 (音色垫组)', is in treble clef and contains a whole rest. The twelfth staff, '弦乐群1', is in bass clef and contains a whole rest. The thirteenth staff, '合成弦乐1', is in treble clef and contains a melodic line with a slur. The fourteenth staff, '合唱 啊', is in treble clef and contains a whole rest. The fifteenth staff, '2-温暖(音色垫组)', is in treble clef and contains a melodic line with a slur and a key signature change to one sharp (F#) at the end.

主旋律1

主旋律2

节拍

声音贝斯

钢片琴

管钟

钢弦吉他

尼龙弦吉他

过激吉他

八音盒

6-金属 (音色垫组)

弦乐群1

合成弦乐1

合唱 啊

2-温暖(音色垫组)

This musical score page, numbered 34, contains 14 staves. The instruments and parts are:

- 主旋律1**: Bass clef, featuring a melodic line with dotted notes and rests.
- 主旋律2**: Treble clef, mostly silent with a few notes.
- 节拍**: Treble clef, mostly silent.
- 声音贝斯**: Bass clef, playing a steady bass line of eighth notes.
- 钢片琴**: Treble clef, mostly silent.
- 管钟**: Treble clef, mostly silent.
- 钢弦吉他**: Treble clef, playing a rhythmic pattern with eighth notes and rests.
- 尼龙弦吉他**: Treble clef, mostly silent.
- 过激吉他**: Treble clef, mostly silent.
- 八音盒**: Treble clef, mostly silent.
- 6-金属 (音色垫组)**: Treble clef, mostly silent.
- 弦乐群1**: Bass clef, playing a sustained, low-frequency pad.
- 合成弦乐1**: Treble clef, playing a sustained, high-frequency pad.
- 合唱 啊**: Treble clef, mostly silent.
- 2-温暖(音色垫组)**: Treble clef, playing a sustained, high-frequency pad.

 A large, faint watermark is visible across the center of the page.

主旋律1

主旋律2

节拍

声音贝斯

钢片琴

管钟

钢弦吉他

尼龙弦吉他

过激吉他

八音盒

6-金属 (音色垫组)

弦乐群1

合成弦乐1

合唱 啊

2-温暖(音色垫组)

主旋律1

主旋律2

节拍

声音贝斯

钢片琴

管钟

钢弦吉他

尼龙弦吉他

过激吉他

八音盒

6-金属 (音色垫组)

弦乐群1

合成弦乐1

合唱 啊

2-温暖(音色垫组)

This musical score page, numbered 36, contains 14 staves. The instruments and parts are:

- 主旋律1 (Main Melody 1): Bass clef, contains a melodic line with eighth and quarter notes.
- 主旋律2 (Main Melody 2): Treble clef, contains a whole rest.
- 节拍 (Tempo): Treble clef, contains a whole rest.
- 声音贝斯 (Sound Bass): Bass clef, contains a bass line with eighth notes.
- 钢片琴 (Steel Plate Piano): Treble clef, contains a whole rest.
- 管钟 (Tubular Bell): Treble clef, contains a whole rest.
- 钢弦吉他 (Steel String Guitar): Treble clef, contains a rhythmic pattern with eighth notes and rests.
- 尼龙弦吉他 (Nylon String Guitar): Treble clef, contains a whole rest.
- 过激吉他 (Overdrive Guitar): Treble clef, contains a whole rest.
- 八音盒 (Music Box): Treble clef, contains a whole rest.
- 6-金属 (音色垫组) (6-Metal (Sound Pad Group)): Treble clef, contains a whole rest.
- 弦乐群1 (String Ensemble 1): Bass clef, contains a whole rest.
- 合成弦乐1 (Synthesized String 1): Treble clef, contains a whole note.
- 合唱 啊 (Chorus Ah): Treble clef, contains a whole rest.
- 2-温暖(音色垫组) (2-Warm (Sound Pad Group)): Treble clef, contains a whole rest with a piano (p) dynamic marking.

主旋律1

主旋律2

节拍

声音贝斯

钢片琴

管钟

钢弦吉他

尼龙弦吉他

过激吉他

八音盒

6-金属 (音色垫组)

弦乐群1

合成弦乐1

合唱 啊

2-温暖(音色垫组)

The image shows a musical score for '97. FX 1 (rain)' on page 37. The score is arranged in a vertical staff format with 15 tracks. The tracks are: 主旋律1 (Main Melody 1), 主旋律2 (Main Melody 2), 节拍 (Tempo), 声音贝斯 (Sound Bass), 钢片琴 (Steel Piano), 管钟 (Tubular Bells), 钢弦吉他 (Steel String Guitar), 尼龙弦吉他 (Nylon String Guitar), 过激吉他 (Overdrive Guitar), 八音盒 (Music Box), 6-金属 (音色垫组) (6-Metal (Sound Pad Group)), 弦乐群1 (String Ensemble 1), 合成弦乐1 (Synthesized String 1), 合唱 啊 (Chorus Ah), and 2-温暖(音色垫组) (2-Warm (Sound Pad Group)). The score includes various musical notations such as notes, rests, and dynamic markings like 'mp' (mezzo-piano). A large, faint watermark 'www.wyww.com' is visible across the center of the page.

主旋律1

主旋律2

节拍

声音贝斯

钢片琴

管钟

钢弦吉他

尼龙弦吉他

过激吉他

八音盒

6-金属 (音色垫组)

弦乐群1

合成弦乐1

合唱 啊

2-温暖(音色垫组)

ppp *pp* *p*

主旋律1

主旋律2

节拍

声音贝斯

钢片琴

管钟

钢弦吉他

尼龙弦吉他

过激吉他

八音盒

6-金属 (音色垫组)

弦乐群1

合成弦乐1

合唱 啊

2-温暖(音色垫组)

mp

39

Detailed description of the musical score: The score is arranged in a vertical stack of 15 staves. From top to bottom: 1. Bass clef staff with a single note on the first line. 2. Treble clef staff with a single note on the first line. 3. Treble clef staff with a single note on the first line. 4. Bass clef staff with a sequence of eighth notes: G2, F2, E2, D2, C2, B1, A1, G1. 5. Treble clef staff with a single note on the first line. 6. Treble clef staff with a sequence of eighth notes: G4, F4, E4, D4, C4, B3, A3, G3. 7. Treble clef staff with a single note on the first line. 8. Treble clef staff with a single note on the first line. 9. Treble clef staff with a single note on the first line. 10. Treble clef staff with a single note on the first line. 11. Treble clef staff with a single note on the first line. 12. Bass clef staff with a long, sustained note on the first line, marked with a hairpin. 13. Treble clef staff with a single note on the first line, marked with *mp*. 14. Treble clef staff with a single note on the first line. 15. Treble clef staff with a single note on the first line. A large, light blue watermark '五线谱网' is overlaid diagonally across the center of the page.

主旋律1

主旋律2

节拍

声音贝斯

钢片琴

管钟

钢弦吉他

尼龙弦吉他

过激吉他

八音盒

6-金属 (音色垫组)

弦乐群1

合成弦乐1

合唱 啊

40
2-温暖(音色垫组)

主旋律1

主旋律2

节拍

声音贝斯

钢片琴

管钟

钢弦吉他

尼龙弦吉他

过激吉他

八音盒

6-金属 (音色垫组)

弦乐群1

合成弦乐1

合唱 啊

2-温暖(音色垫组)

p

41

Detailed description of the musical score: The score is arranged in a vertical stack of 15 staves. From top to bottom, the staves are labeled: 主旋律1 (Bass clef), 主旋律2 (Treble clef), 节拍 (Treble clef, showing a single note), 声音贝斯 (Bass clef, showing a sequence of eighth notes), 钢片琴 (Treble clef), 管钟 (Treble clef, showing a sequence of eighth notes), 钢弦吉他 (Treble clef), 尼龙弦吉他 (Treble clef), 过激吉他 (Treble clef), 八音盒 (Treble clef), 6-金属 (音色垫组) (Treble clef), 弦乐群1 (Bass clef), 合成弦乐1 (Treble clef), 合唱 啊 (Treble clef), and 2-温暖(音色垫组) (Treble clef). A dynamic marking *p* is placed on the 6-金属 staff. A large, light blue watermark '五线谱网' is overlaid diagonally across the center of the page.

主旋律1

主旋律2

节拍

声音贝斯
mp *p* *pp*

钢片琴
p

管钟

钢弦吉他

尼龙弦吉他

过激吉他

八音盒

6-金属 (音色垫组)

弦乐群1
mp

合成弦乐1

合唱 啊

42
 2-温暖(音色垫组)

主旋律1

主旋律2

节拍

声音贝斯

钢片琴

管钟

钢弦吉他

尼龙弦吉他

过激吉他

八音盒

6-金属 (音色垫组)

弦乐群1

合成弦乐1

合唱 啊

2-温暖(音色垫组)

The musical score for page 43 consists of 14 staves. The instruments and parts are: Main Melody 1 (Bass clef), Main Melody 2 (Treble clef), Tempo (Treble clef), Sound Bass (Bass clef), Steel Plate Piano (Treble clef), Tube Bell (Treble clef), Steel String Guitar (Treble clef), Nylon String Guitar (Treble clef), Overdrive Guitar (Treble clef), Music Box (Treble clef), 6-Metal (音色垫组) (Treble clef), String Ensemble 1 (Bass clef), Synthesized Strings 1 (Treble clef), Chorus (啊) (Treble clef), and 2-Warm (音色垫组) (Treble clef). The score includes various musical notations such as notes, rests, and a large slur over the String Ensemble 1 part. A large watermark '五线谱网' is visible across the page.

主旋律1

主旋律2

节拍

声音贝斯

钢片琴

管钟

钢弦吉他

尼龙弦吉他

过激吉他

八音盒

6-金属 (音色垫组)

弦乐群1

合成弦乐1

合唱 啊

44

2-温暖(音色垫组)

Detailed description of the musical score: The score is for page 44 and consists of 14 staves. The instruments and parts are: Main Melody 1 (Bass clef), Main Melody 2 (Treble clef), Tempo (Treble clef), Bass (Bass clef), Steel Plate Piano (Treble clef), Tube Bell (Treble clef), Steel String Guitar (Treble clef), Nylon String Guitar (Treble clef), Overdrive Guitar (Treble clef), Music Box (Treble clef), 6-Metal (音色垫组) (Treble clef), String Ensemble 1 (Bass clef), Synthesized String 1 (Treble clef), Chorus 'A' (Treble clef), and 2-Warm (音色垫组) (Treble clef). The score includes various musical notations such as notes, rests, and dynamic markings. A large, faint watermark '51WU.COM' is visible across the page.

主旋律1

主旋律2

节拍

声音贝斯

钢片琴

管钟

钢弦吉他

尼龙弦吉他

过激吉他

八音盒

6-金属 (音色垫组)

弦乐群1

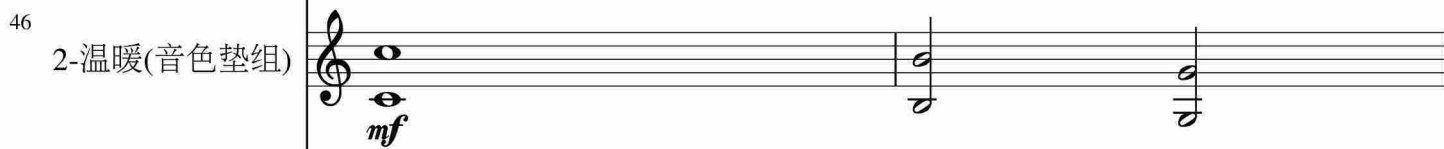
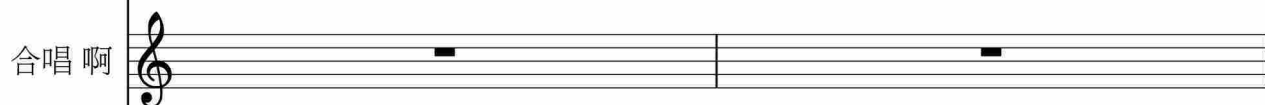
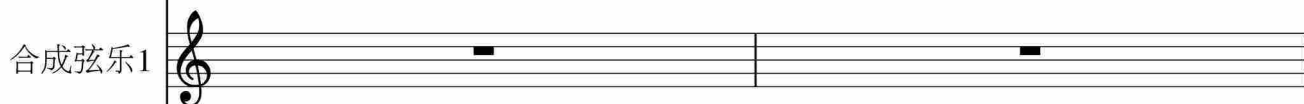
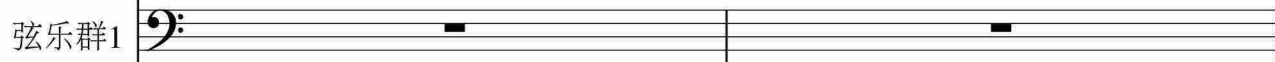
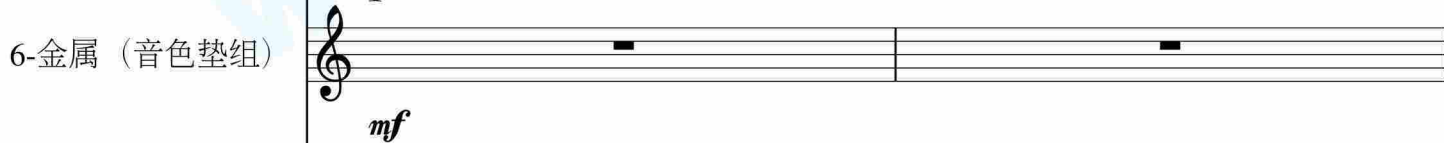
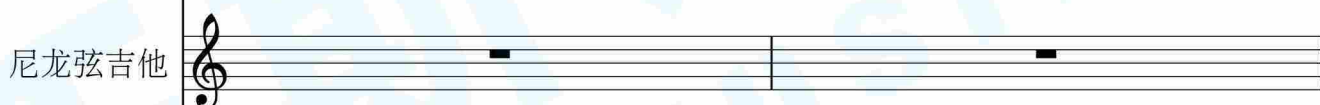
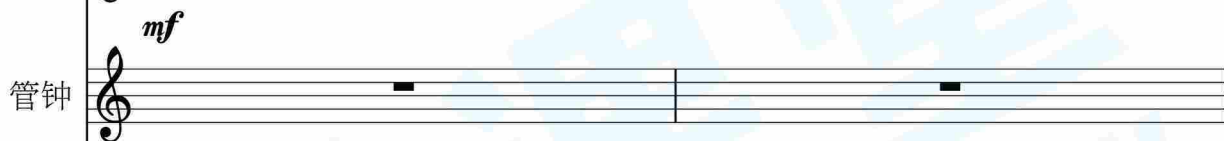
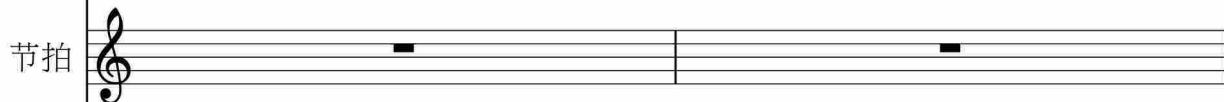
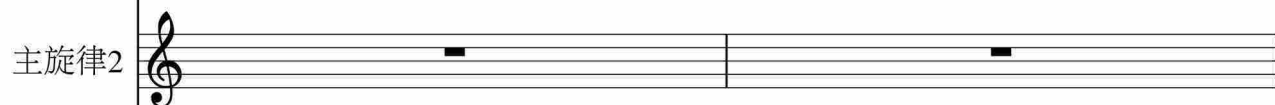
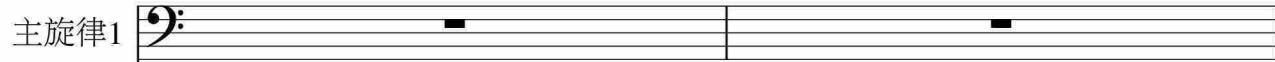
合成弦乐1

合唱 啊

2-温暖(音色垫组)

mf

The musical score for page 45 consists of 15 staves. The instruments and parts are: Main Melody 1 (Bass clef), Main Melody 2 (Treble clef), Tempo (Treble clef), Bass (Bass clef), Steel Piano (Treble clef), Tube Bell (Treble clef), Steel String Guitar (Treble clef), Nylon String Guitar (Treble clef), Overdrive Guitar (Treble clef), Music Box (Treble clef), 6-Metal (音色垫组) (Treble clef), String Ensemble 1 (Bass clef), Synthesized Strings 1 (Treble clef), Chorus (啊) (Treble clef), and 2-Warm (音色垫组) (Treble clef). The score includes various musical notations such as notes, rests, and dynamic markings like *mf*. A large watermark '五线谱网' is visible across the page.



主旋律1

主旋律2

节拍

声音贝斯

钢片琴

管钟

钢弦吉他

尼龙弦吉他

过激吉他

八音盒

6-金属 (音色垫组)

弦乐群1

合成弦乐1

合唱 啊

2-温暖(音色垫组)

47

主旋律1

主旋律2

节拍

声音贝斯

钢片琴

管钟

钢弦吉他

尼龙弦吉他

过激吉他

八音盒

6-金属 (音色垫组)

弦乐群1

合成弦乐1

合唱 啊

48

2-温暖(音色垫组)

Detailed description of the musical score: The score is arranged in a vertical stack of staves. From top to bottom, the staves are: Main Melody 1 (Bass clef), Main Melody 2 (Treble clef), Tempo (Treble clef), Bass (Bass clef), Piano (Treble clef), Chimes (Treble clef), Steel String Guitar (Treble clef), Nylon String Guitar (Treble clef), Overdrive Guitar (Treble clef), Music Box (Treble clef), Metal (Treble clef), String Ensemble 1 (Bass clef), Synthesized Strings 1 (Treble clef), Chorus 'Ah' (Treble clef), and Warm (Treble clef). The piano part features a rhythmic pattern of eighth notes. The music box part has a melodic line with slurs. The warm part at the bottom shows a few notes in the bass register.

主旋律1

主旋律2

节拍

声音贝斯

钢片琴

管钟

mf

钢弦吉他

尼龙弦吉他

过激吉他

八音盒

6-金属 (音色垫组)

弦乐群1

合成弦乐1

合唱 啊

2-温暖(音色垫组)

49

Detailed description of the musical score: The score is arranged in 15 staves. The first three staves (主旋律1, 主旋律2, 节拍) contain rests. The 声音贝斯 staff shows a bass line with eighth notes. The 钢片琴 staff has a melodic line with some accidentals. The 管钟 staff has a rest. The 钢弦吉他和 尼龙弦吉他的 staves have rests. The 过激吉他的 staff has a rest. The 八音盒 staff has a melodic line with eighth notes. The 6-金属 (音色垫组) staff has a rest. The 弦乐群1 and 合成弦乐1 staves have rests. The 合唱 啊 staff has a rest. The 2-温暖(音色垫组) staff has a long, sustained note with a hairpin crescendo. A large watermark '五线谱网' is visible across the page.

主旋律1

主旋律2

节拍

声音贝斯

钢片琴

管钟

钢弦吉他

尼龙弦吉他

过激吉他

八音盒

6-金属 (音色垫组)

弦乐群1

合成弦乐1

合唱 啊

主旋律1

主旋律2

节拍

声音贝斯

钢片琴

管钟

钢弦吉他

尼龙弦吉他

过激吉他

八音盒

6-金属 (音色垫组)

弦乐群1

合成弦乐1

合唱 啊

2-温暖(音色垫组)

The musical score for page 54 consists of 15 staves. The instruments and parts are: Main Melody 1 (Bass clef), Main Melody 2 (Treble clef), Rhythm (Treble clef), Bass (Bass clef), Piano (Treble clef), Tubular Bells (Treble clef), Acoustic Guitar (Treble clef), Nylon Guitar (Treble clef), Electric Guitar (Treble clef), Music Box (Treble clef), Metal textures (Treble clef), String Ensemble 1 (Bass clef), Synthesized Strings 1 (Treble clef), Choir 'Ah' (Treble clef), and Warm textures (Treble clef). The score includes various musical notations such as notes, rests, and accidentals.

主旋律1

主旋律2

节拍

声音贝斯

钢片琴

管钟

钢弦吉他

尼龙弦吉他

过激吉他

八音盒

6-金属 (音色垫组)

弦乐群1

合成弦乐1

合唱 啊

52

2-温暖(音色垫组)

Detailed description of the musical score: The score is arranged in a vertical stack of staves. From top to bottom: 1. '主旋律1' (Main Melody 1) in bass clef, mostly rests. 2. '主旋律2' (Main Melody 2) in treble clef, mostly rests. 3. '节拍' (Tempo) in treble clef, mostly rests. 4. '声音贝斯' (Sound Bass) in bass clef, playing a rhythmic pattern of eighth notes. 5. '钢片琴' (Celeste) in treble clef, playing a melodic line with eighth notes and some accidentals. 6. '管钟' (Tubular Bells) in treble clef, playing a melodic line with eighth notes and rests. 7. '钢弦吉他' (Acoustic Guitar) in treble clef, mostly rests. 8. '尼龙弦吉他' (Nylon Guitar) in treble clef, mostly rests. 9. '过激吉他' (Electric Guitar) in treble clef, mostly rests. 10. '八音盒' (Music Box) in treble clef, playing a rhythmic pattern of eighth notes. 11. '6-金属 (音色垫组)' (6-Metal Pads) in treble clef, mostly rests with a few notes. 12. '弦乐群1' (String Ensemble 1) in bass clef, mostly rests. 13. '合成弦乐1' (Synthesized Strings 1) in treble clef, mostly rests. 14. '合唱 啊' (Choir Ah) in treble clef, mostly rests. 15. '2-温暖(音色垫组)' (2-Warm Pads) in treble clef, starting with a few notes and then a long, sustained note.

主旋律1

主旋律2

节拍

声音贝斯

钢片琴

管钟

钢弦吉他

尼龙弦吉他

过激吉他

八音盒

6-金属 (音色垫组)

弦乐群1

合成弦乐1

合唱 啊

2-温暖(音色垫组)

主旋律1

主旋律2

节拍

声音贝斯

钢片琴

管钟

钢弦吉他

尼龙弦吉他

过激吉他

八音盒

6-金属 (音色垫组)

弦乐群1

合成弦乐1

合唱 啊

54

2-温暖(音色垫组)

Detailed description of the musical score: The score is arranged in a vertical stack of staves. From top to bottom: 1. Main Melody 1 (Bass clef, whole rests). 2. Main Melody 2 (Treble clef, whole rests). 3. Tempo (Treble clef, whole rests). 4. Bass (Bass clef, eighth-note chords). 5. Steel Drum (Treble clef, eighth-note chords with accidentals). 6. Chimes (Treble clef, eighth-note chords with accidentals). 7. Acoustic Guitar (Treble clef, whole rests). 8. Nylon Guitar (Treble clef, whole rests). 9. Electric Guitar (Treble clef, whole rests). 10. Harmonica (Treble clef, eighth-note chords). 11. Metal (Texture Pad) (Treble clef, whole rests). 12. String Ensemble 1 (Bass clef, whole rests). 13. Synthesized Strings 1 (Treble clef, whole rests). 14. Chorus 'A' (Treble clef, whole rests). 15. Warm (Texture Pad) (Treble clef, starting with a chord and a long note). A large, faint watermark 'XINWANG' is visible across the middle of the page.

主旋律1

主旋律2

节拍

声音贝斯

钢片琴

管钟

钢弦吉他

尼龙弦吉他

过激吉他

八音盒

6-金属 (音色垫组)

弦乐群1

合成弦乐1

合唱 啊

2-温暖(音色垫组)

55

主旋律1

主旋律2

节拍

声音贝斯

钢片琴

管钟

钢弦吉他

尼龙弦吉他

过激吉他

八音盒

6-金属 (音色垫组)

弦乐群1

合成弦乐1

合唱 啊

56

2-温暖(音色垫组)

Detailed description of the musical score: The score is arranged in a vertical stack of staves. From top to bottom, the staves are: 1. Bass clef, labeled '主旋律1', containing a whole rest. 2. Treble clef, labeled '主旋律2', containing a whole rest. 3. Treble clef, labeled '节拍', containing a whole rest. 4. Bass clef, labeled '声音贝斯', containing a rhythmic pattern of eighth notes. 5. Treble clef, labeled '钢片琴', containing a complex rhythmic pattern with many sixteenth notes. 6. Treble clef, labeled '管钟', containing a few notes followed by rests. 7. Treble clef, labeled '钢弦吉他', containing a whole rest. 8. Treble clef, labeled '尼龙弦吉他', containing a whole rest. 9. Treble clef, labeled '过激吉他', containing a whole rest. 10. Treble clef, labeled '八音盒', containing a whole rest. 11. Treble clef, labeled '6-金属 (音色垫组)', containing two whole notes, with the second note marked with a forte 'f' dynamic. 12. Bass clef, labeled '弦乐群1', containing a whole rest. 13. Treble clef, labeled '合成弦乐1', containing a whole rest. 14. Treble clef, labeled '合唱 啊', containing a whole rest. 15. Treble clef, labeled '2-温暖(音色垫组)', containing a whole rest. A large, light blue watermark '五线谱网 WU XIAN PU WANG' is overlaid diagonally across the center of the page.

主旋律1

主旋律2

节拍

声音贝斯

钢片琴

管钟

钢弦吉他

尼龙弦吉他

过激吉他

八音盒

6-金属 (音色垫组)

弦乐群1

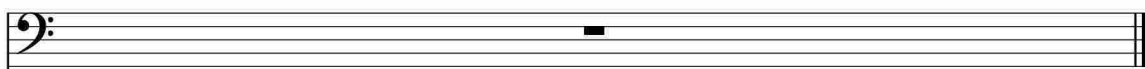
合成弦乐1

合唱 啊

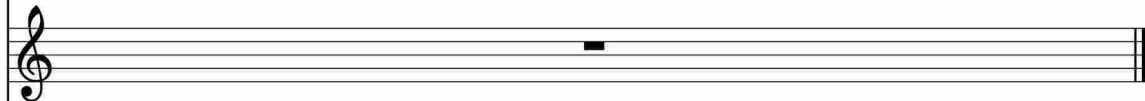
2-温暖(音色垫组)

The musical score for page 65 consists of 14 staves. The instruments and parts are: Main Melody 1 (Bass clef), Main Melody 2 (Treble clef), Rhythm (Treble clef), Bass (Bass clef), Piano (Treble clef), Tubular Bells (Treble clef), Steel String Guitar (Treble clef), Nylon String Guitar (Treble clef), Overdrive Guitar (Treble clef), Harpsichord (Treble clef), 6-Metal (Treble clef), String Ensemble 1 (Bass clef), Synthesized Strings 1 (Treble clef), Choir (Treble clef), and 2-Warm (Treble clef). The score shows musical notation for each part, including notes, rests, and dynamic markings. A large watermark 'XINSHIJI' is visible across the page.

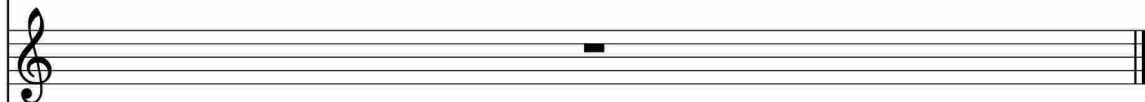
主旋律1



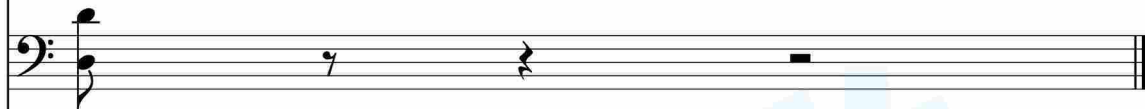
主旋律2



节拍



声音贝斯



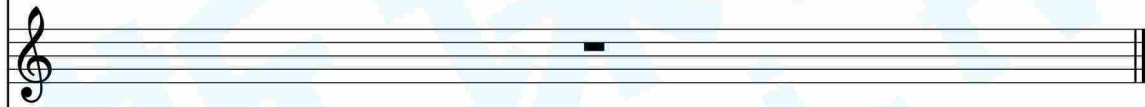
钢片琴



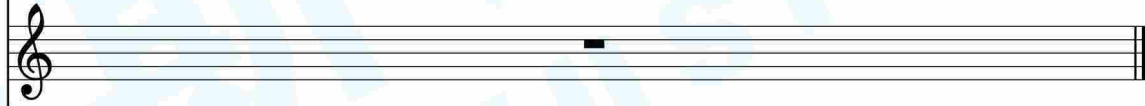
管钟



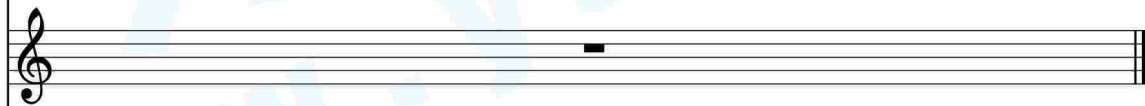
钢弦吉他



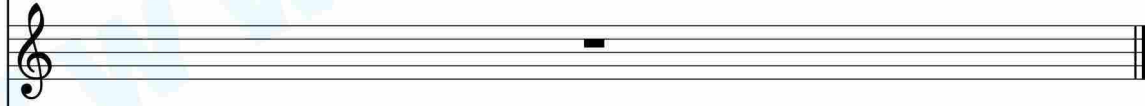
尼龙弦吉他



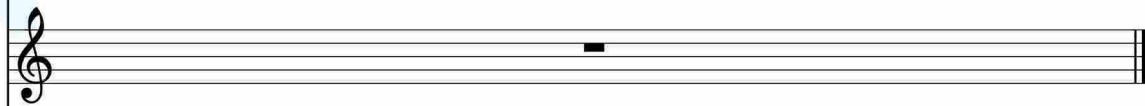
过激吉他



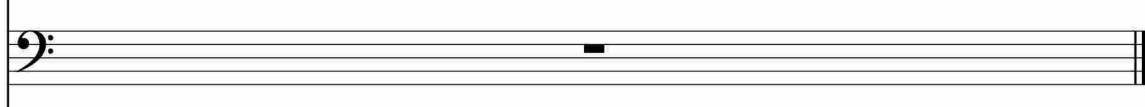
八音盒



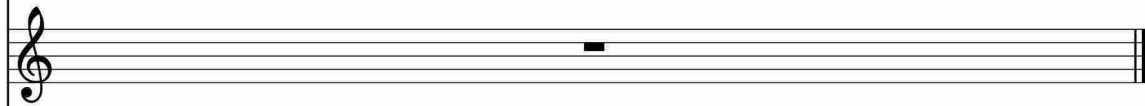
6-金属 (音色垫组)



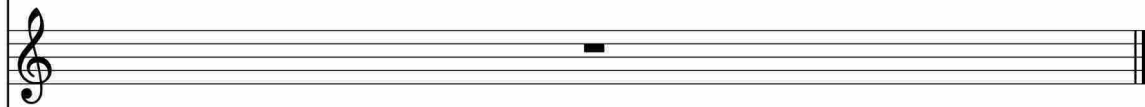
弦乐群1



合成弦乐1



合唱 啊



2-温暖(音色垫组)

