

Maria

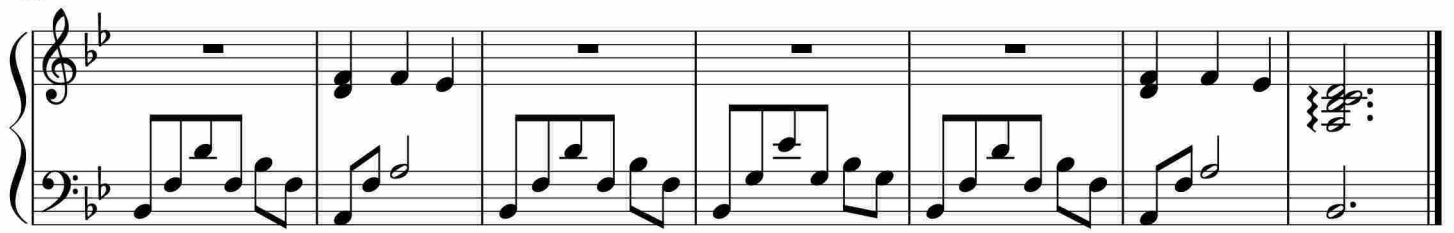
Measures 1-5 of the piece. The music is in 3/4 time with a key signature of two flats (B-flat and E-flat). The right hand features a melodic line with a repeat sign at the beginning, while the left hand provides a steady eighth-note accompaniment.

Measures 6-11. The right hand continues the melodic line with a long slur over measures 7 and 8, and a repeat sign at the end of measure 11. The left hand maintains the eighth-note accompaniment.

Measures 12-17. Measure 12 begins with a first ending bracket labeled '1.'. The right hand has a melodic line with a repeat sign at the end of measure 17. The left hand continues the eighth-note accompaniment.

Measures 18-23. The right hand features a series of chords and a melodic line, with a repeat sign at the end of measure 23. The left hand continues the eighth-note accompaniment.

Measures 24-29. Measure 24 begins with a first ending bracket labeled '1.'. The right hand has a melodic line with a repeat sign at the end of measure 29. The left hand continues the eighth-note accompaniment.



于斯课堂
www.yusi.tv