

058 Horse Lantern Tune

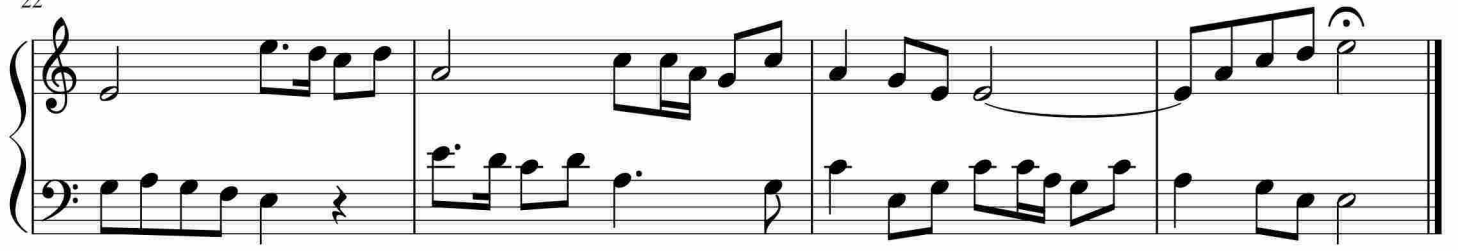
Measures 1-4 of the piece. The music is in 4/4 time. The right hand features a melodic line with eighth and quarter notes, while the left hand provides a harmonic accompaniment with chords and some eighth-note patterns.

Measures 5-8. The right hand continues the melodic development with eighth-note runs. The left hand features a steady accompaniment of chords, often with a rhythmic pattern of eighth notes.

Measures 9-12. The right hand has a more active melodic line with eighth-note patterns. The left hand accompaniment includes some rests and chordal textures.

Measures 13-16. The right hand continues with a melodic line of eighth and quarter notes. The left hand accompaniment features a mix of chords and eighth-note patterns.

Measures 17-20. The right hand has a melodic line with eighth-note patterns. The left hand accompaniment includes eighth-note runs and chordal textures.



于斯课堂
www.yusi.tv