

缠水飞霜

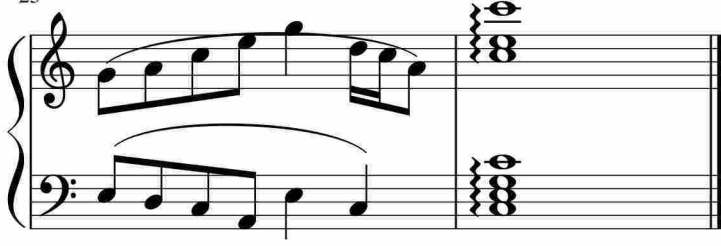
Measures 1-5 of the piece. The music is in 4/4 time. The right hand features a melodic line with eighth and sixteenth notes, while the left hand provides a rhythmic accompaniment with eighth notes and chords.

Measures 6-9. Measure 6 begins with a treble clef. The right hand continues the melodic development with slurs and ties. The left hand maintains a steady accompaniment.

Measures 10-13. The right hand shows more complex rhythmic patterns with sixteenth notes. The left hand continues with a consistent accompaniment.

Measures 14-18. The right hand features a series of slurs and ties. The left hand has some rests in measures 15 and 16, indicating a change in the accompaniment.

Measures 19-22. The right hand concludes with a melodic phrase. The left hand provides a final accompaniment with eighth notes.



于斯课堂
www.yusi.tv